

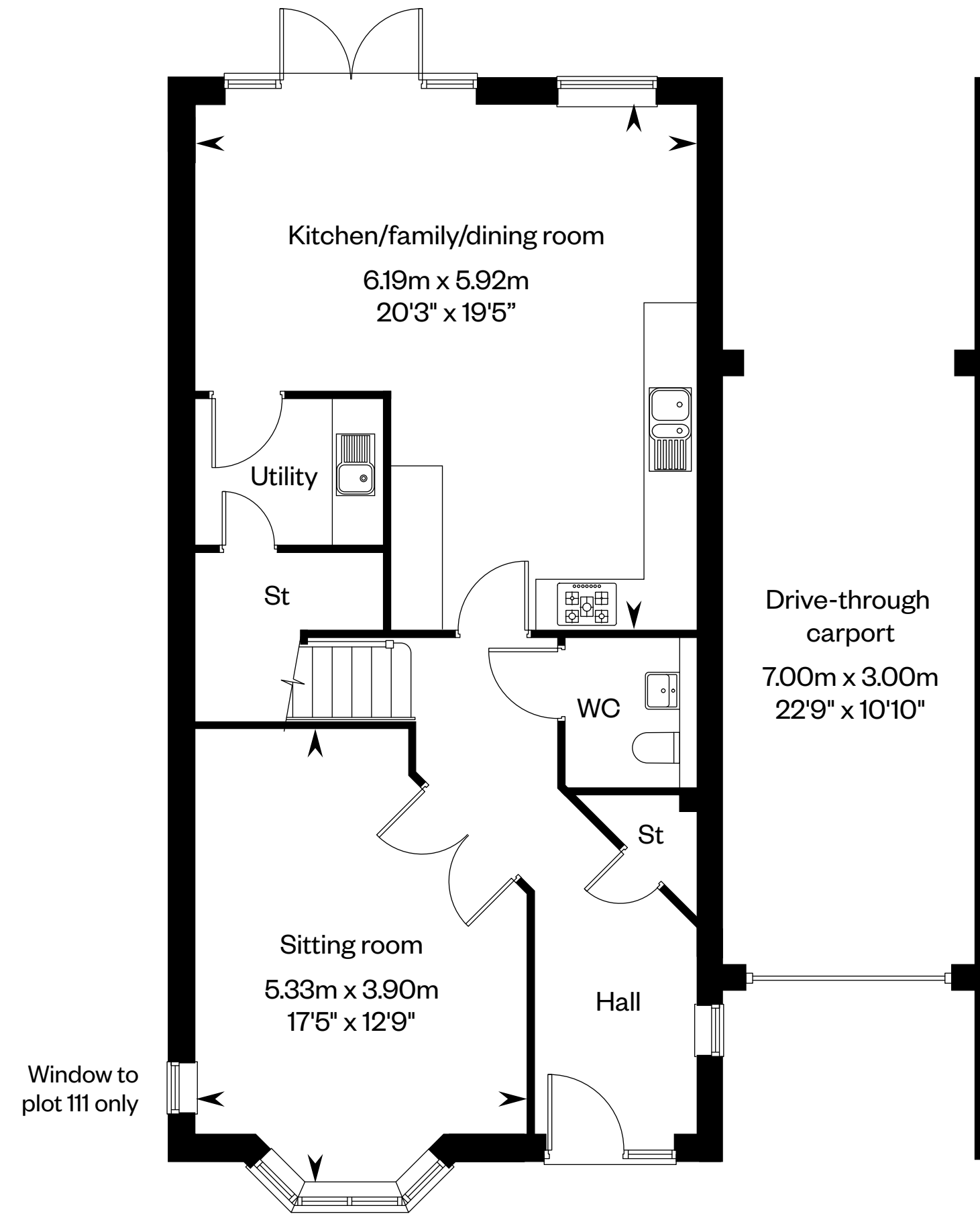
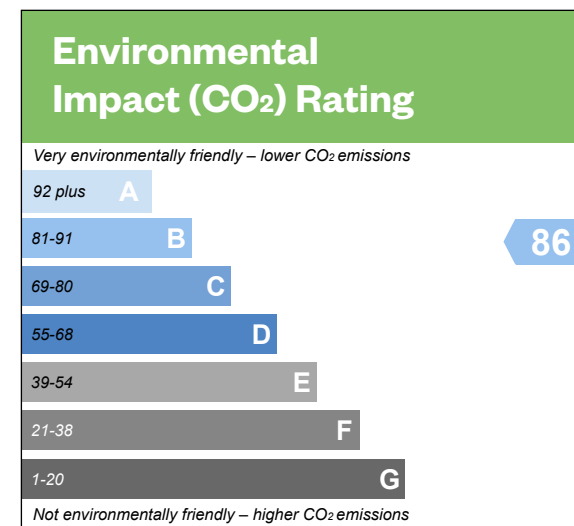
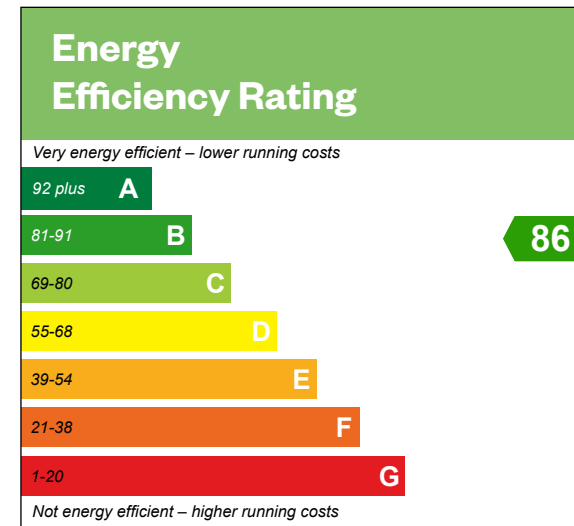
The Denwick

5 bedroom mid & end terrace house with drive-through carport

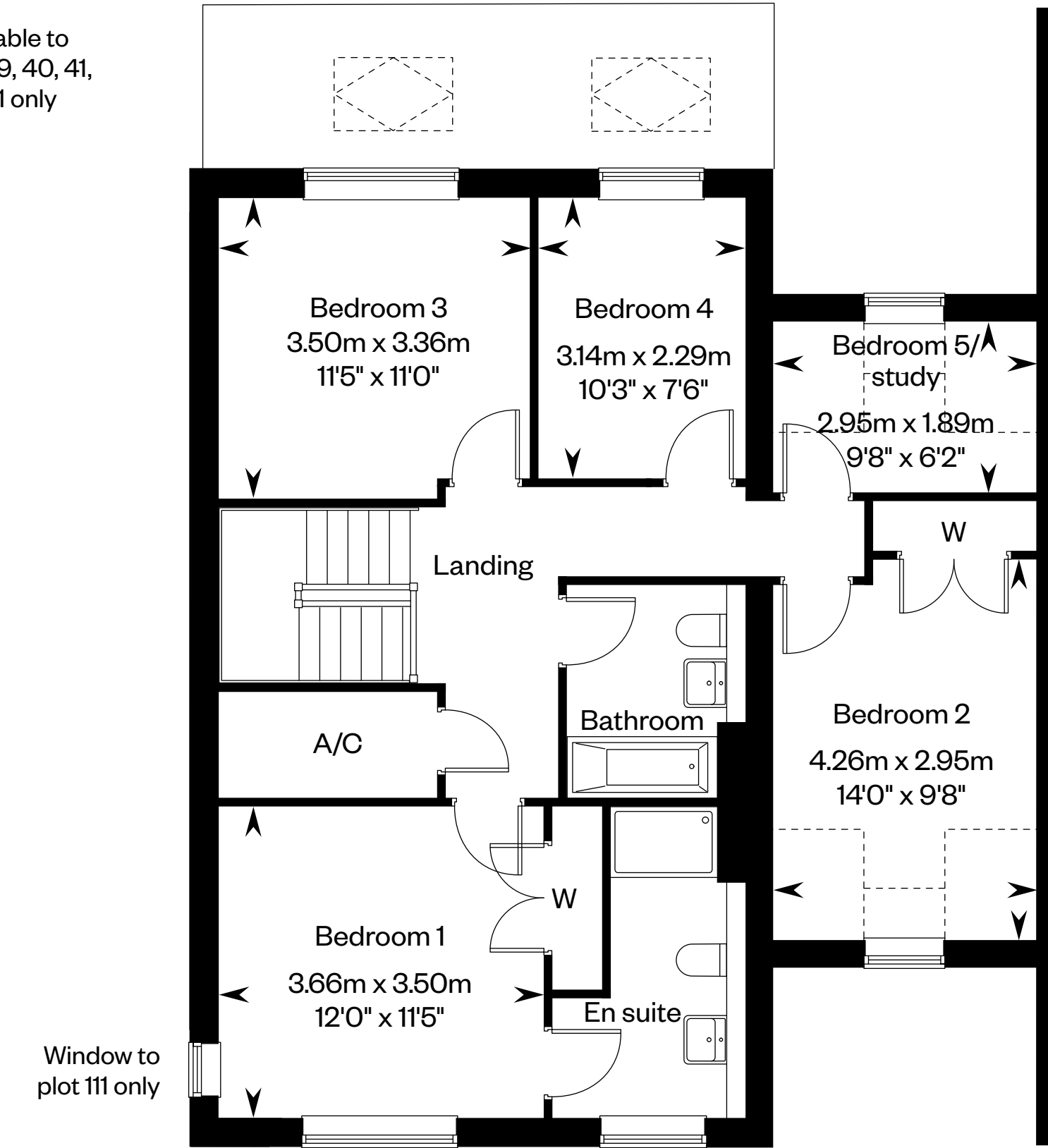


The Denwick

Plots 32, 38, 39, 40, 41, 109, 110 & 111 – as shown



Applicable to plots 39, 40, 41, 110 & 111 only



Dotted lines denotes reduced head height or structure above and approximate position of 1800mm ceiling height. Please ask your Sales Consultant for further information. A/C: Airing cupboard. St: Storage cupboard. W: Wardrobe. ☐ Roof light.

IMPORTANT NOTICE TO CUSTOMERS: The Consumer Protection from Unfair Trading Regulations 2008. Cala Homes (North Home Counties) Limited operates a policy of continual product development and the specifications outlined in this brochure are indicative only. The computer generated images and photographs do not necessarily represent the actual finishings/elevation or treatments, landscaping, furnishings and fittings at this development. Information contained is accurate at date of publication on 04.07.24. See the main brochure for the full Consumer Protection statement. This is a Predicted Energy Assessment for properties that are incomplete. Once the property is completed, this rating will be updated and an official Energy Performance Certificate will be created for the property.