



# Townhouse living

At St Crispin's Court

Take contemporary city living to another level



Photography of typical Cala townhouse



# Flexible living on three floors

Young professional, couple, upsizer or rightsizer looking for a stylish yet low maintenance home? The townhouses at St Crispin's Court are the ideal choice for a city lifestyle, in a home full of possibilities.

Eco-friendly, energy-efficient, complete with private driveway and city garden, smart design features and flexible light-filled spaces can evolve and adapt to match your changing moods, needs and life stages.

Take a closer look at St Crispin's Court...



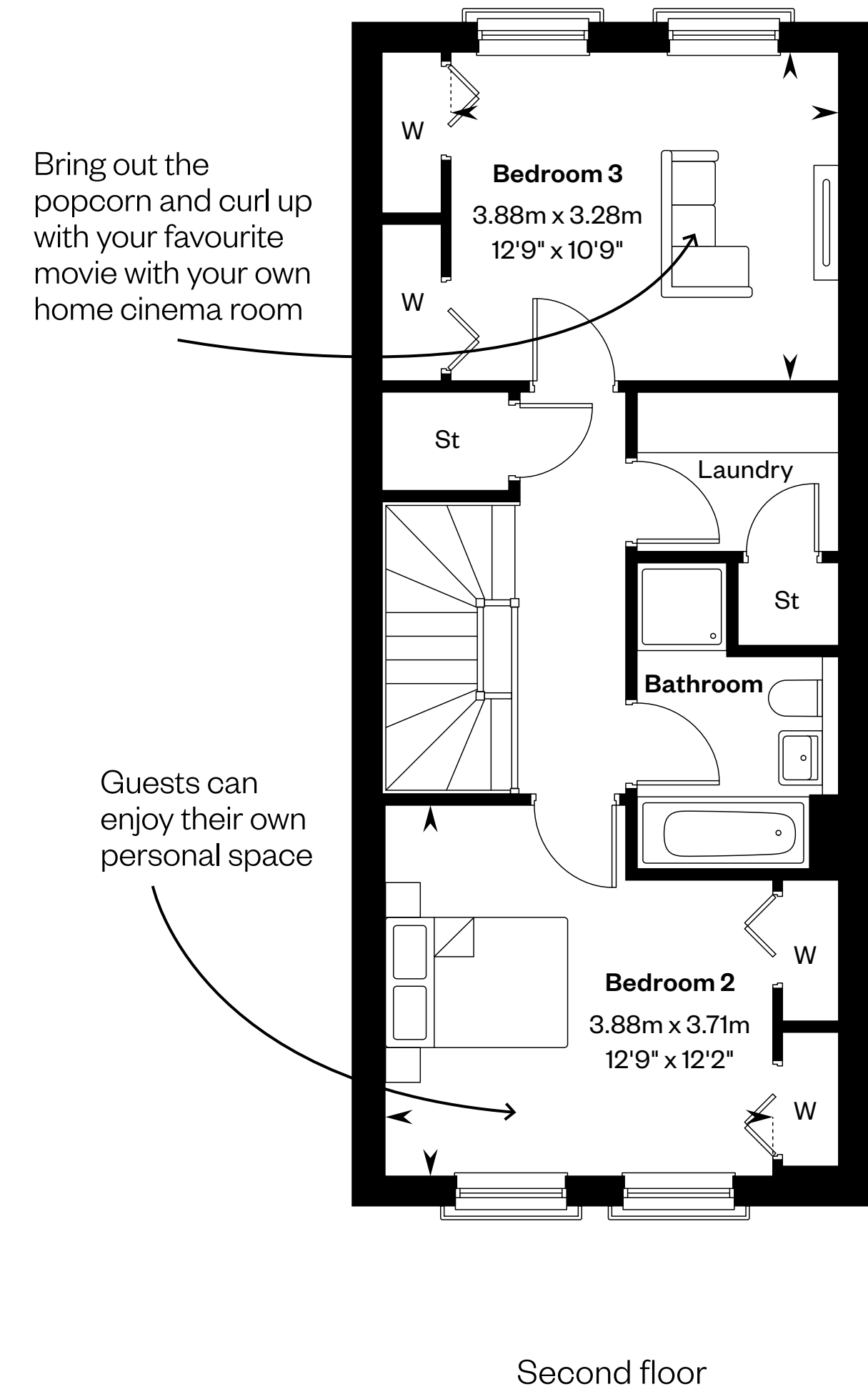
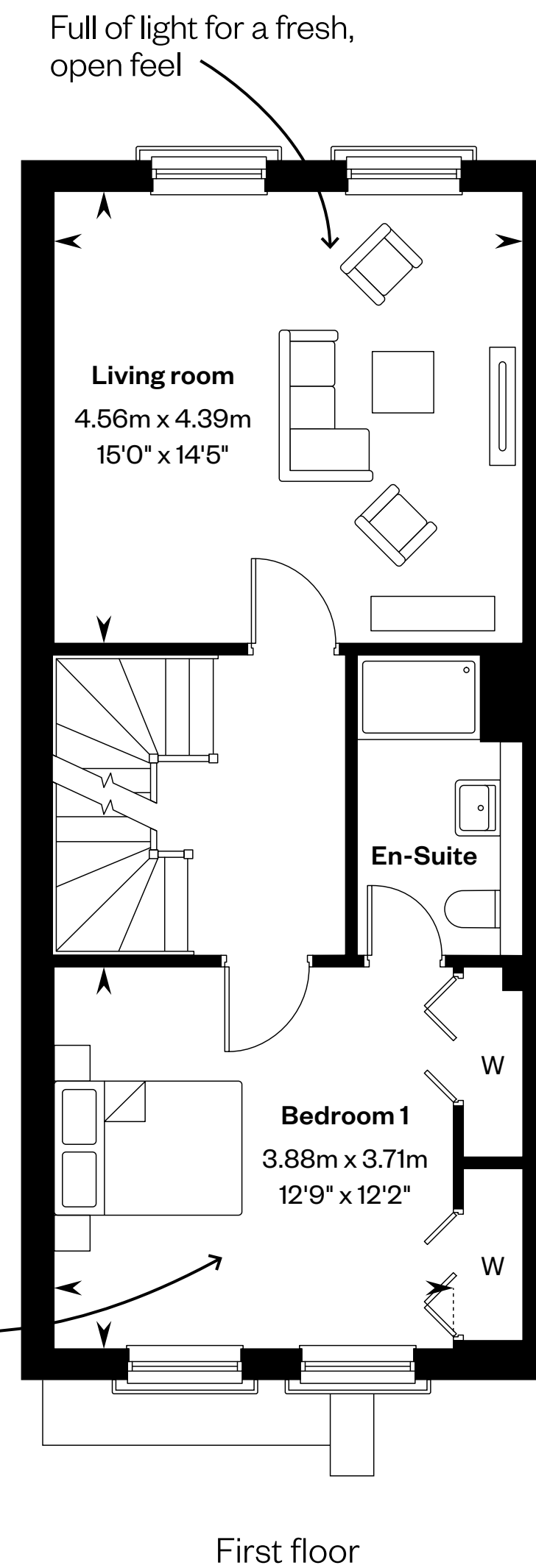
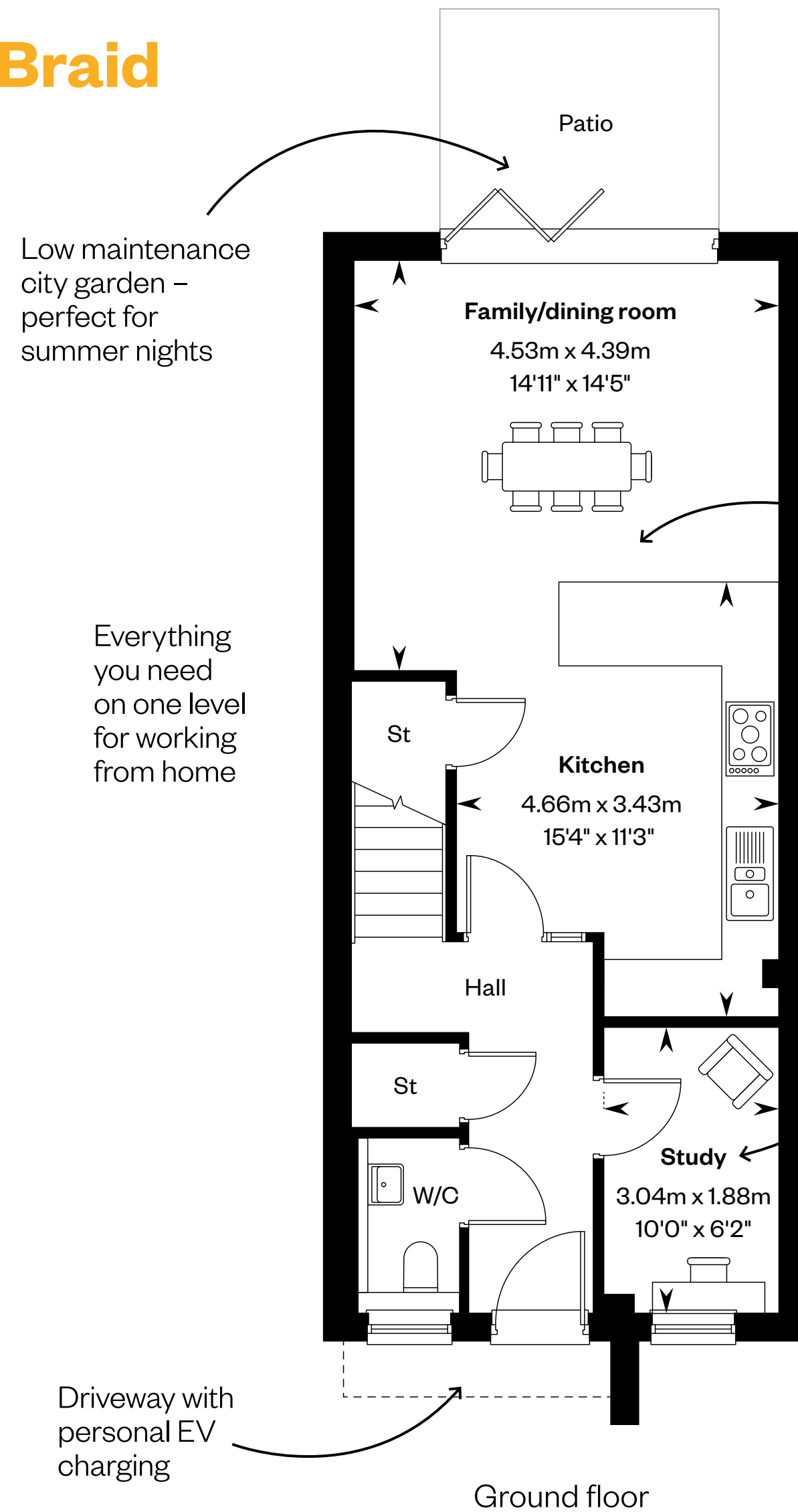
# Young professionals – loving work and life in the city

For a fast moving professional lifestyle, living in the city is ideal. Space, flexibility and style are essentials – and the townhouses at St Crispin's Court deliver at every level.



Lifestyle photography from a Cala showhome

# The Braid



For plot specific details please speak to a Sales Consultant. Please ask your Sales Consultant for further details. St: Store cupboard. W: Wardrobe.

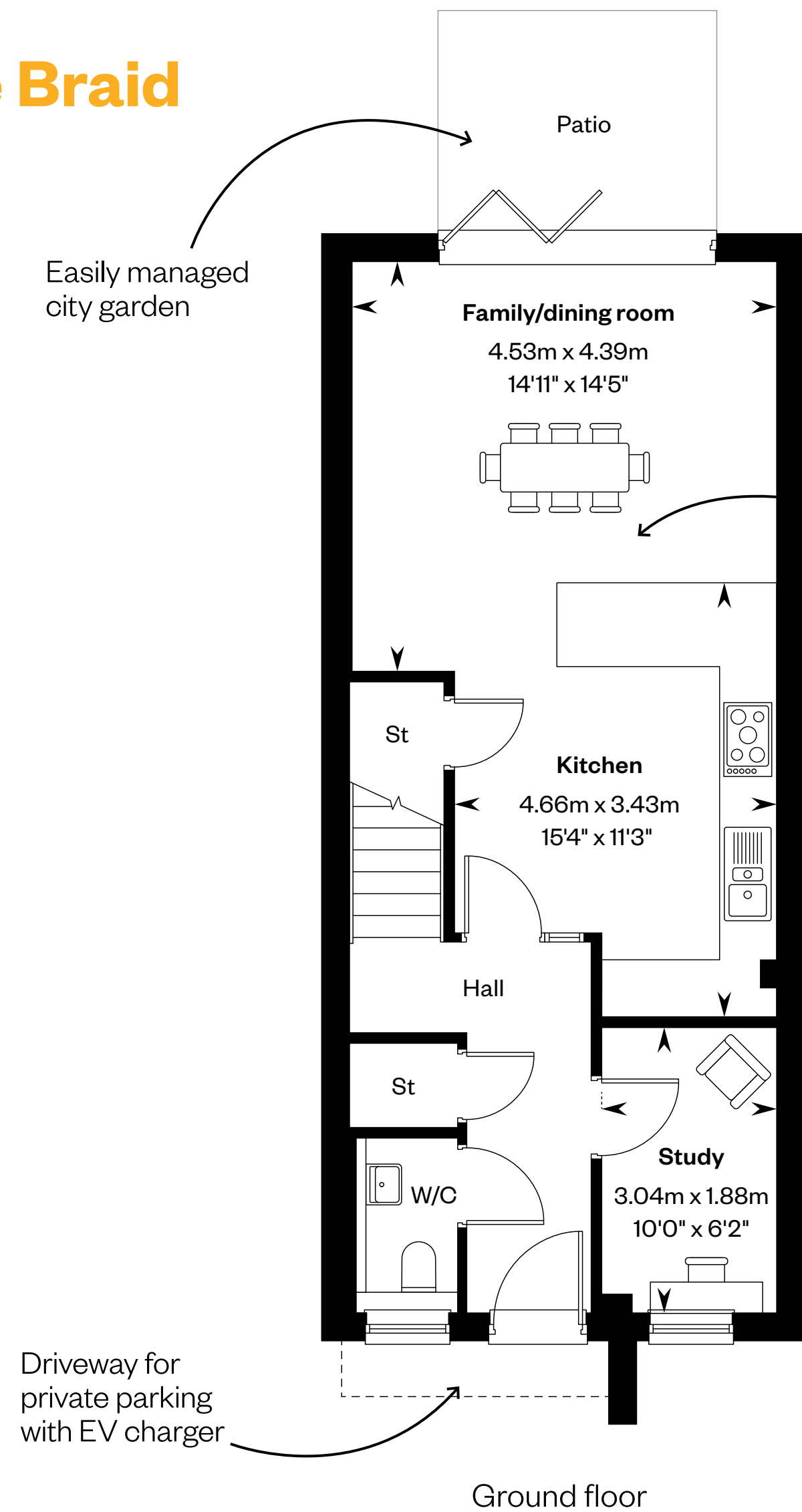
# Rightsizers – high quality, low-maintenance living

Move to a smart contemporary home full of low-maintenance features and make the most of adaptable spaces on three levels, for a high quality, highly desirable city lifestyle.



Stock photography

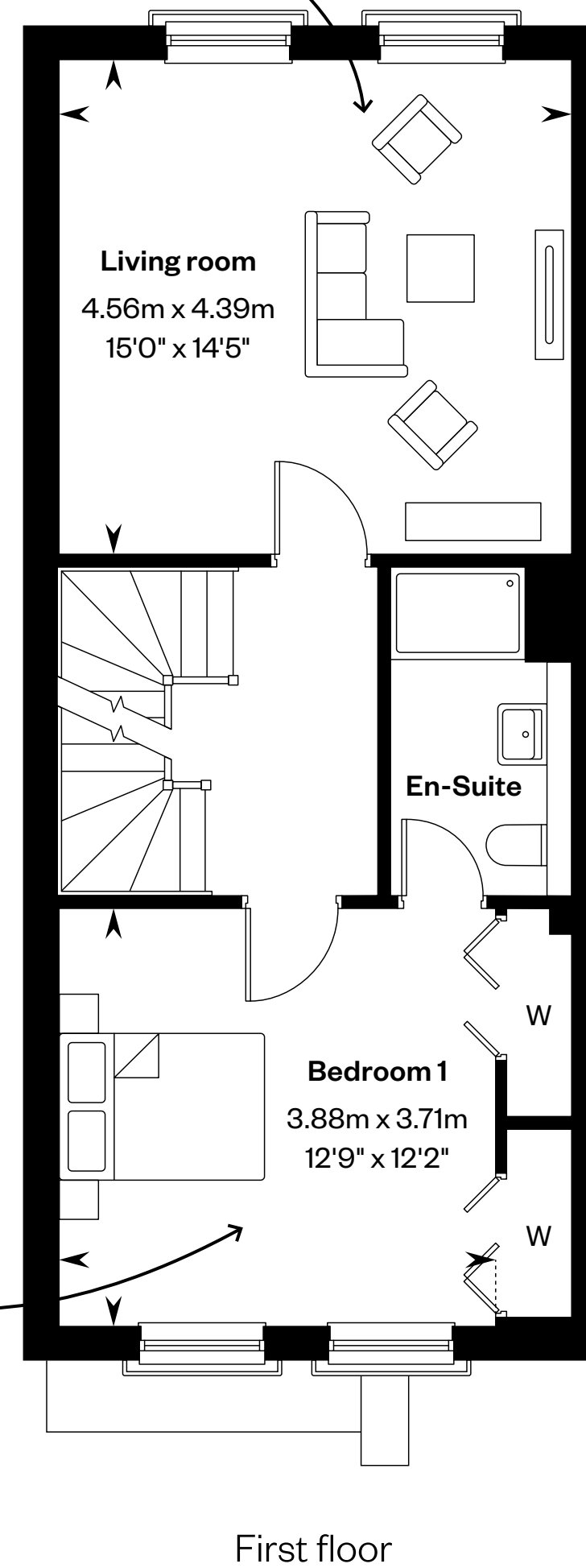
# The Braid



This living area is big and bright with lots of natural light

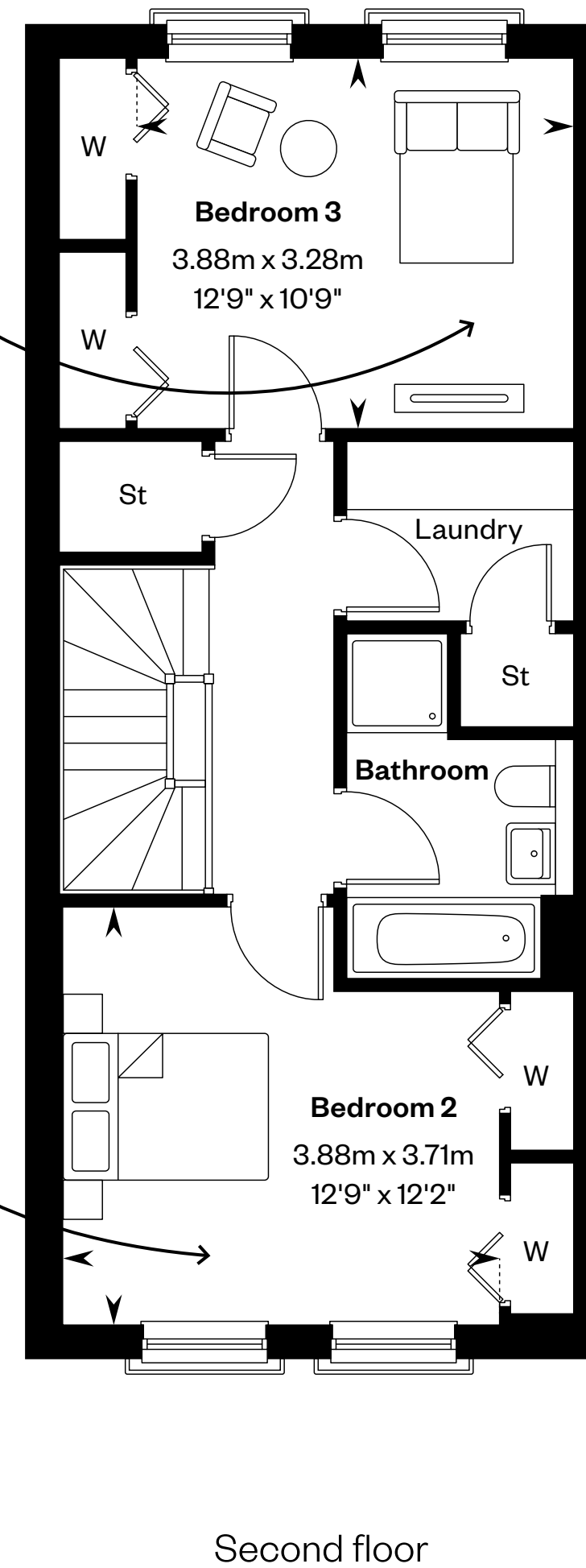
Eat together, entertain friends and family. Built in appliances make life easier

Bliss...your personal, peaceful haven



Hobby or craft room for some me time? A sofa bed would make this room even more flexible

Expecting family to visit? No problem with double size bedrooms



For plot specific details please speak to a Sales Consultant. Please ask your Sales Consultant for further details. St: Store cupboard. W: Wardrobe.

# Perfect for young families

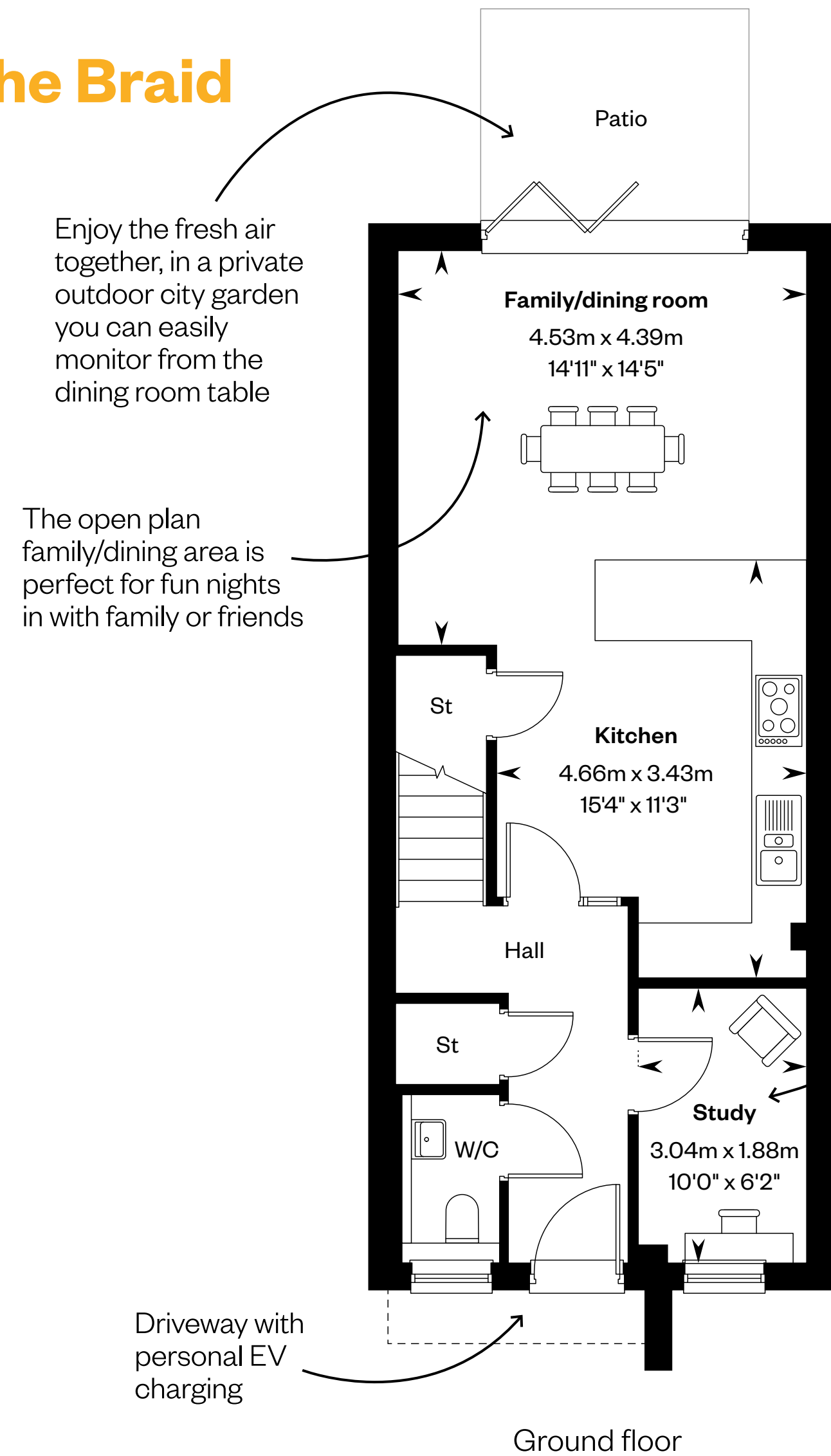
Life for a young family can be fun and games and take over the whole house. Set over three floors, our townhouses allow you to create distinct areas to live your life with a special place for the little ones.



Stock photography

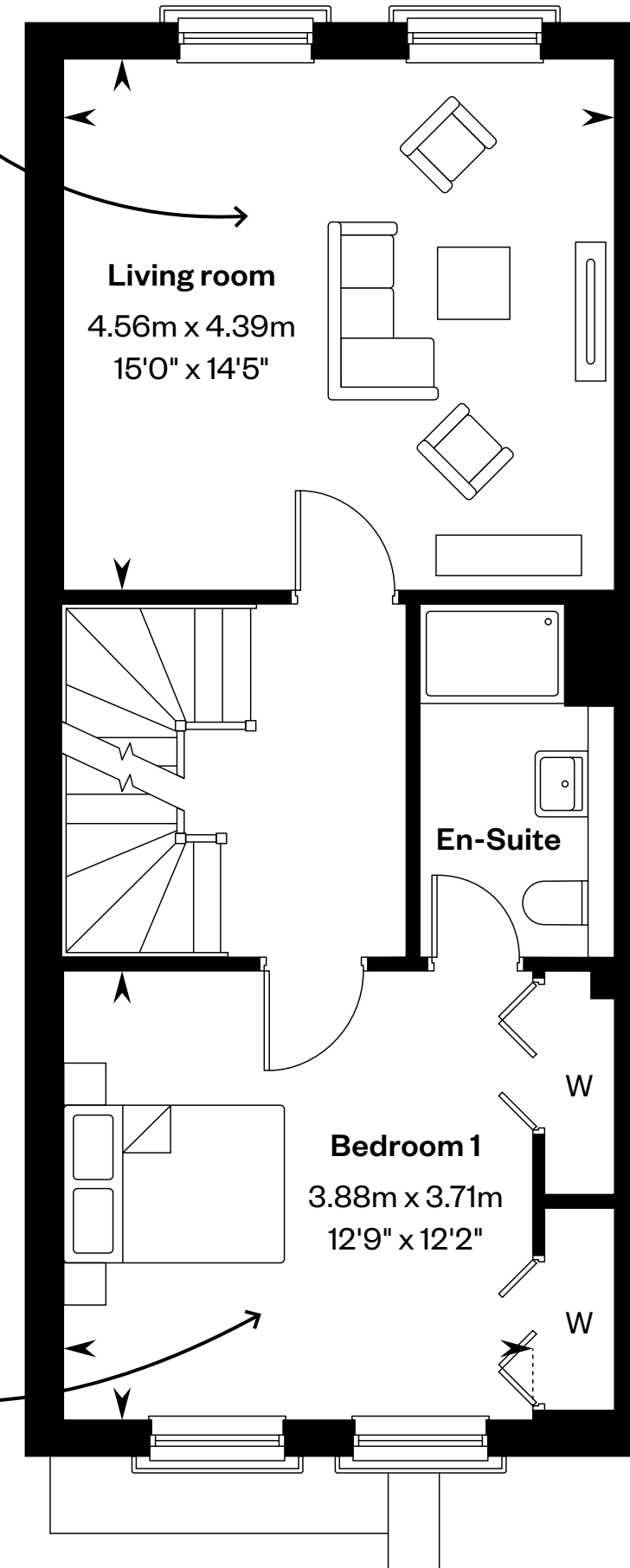


# The Braid



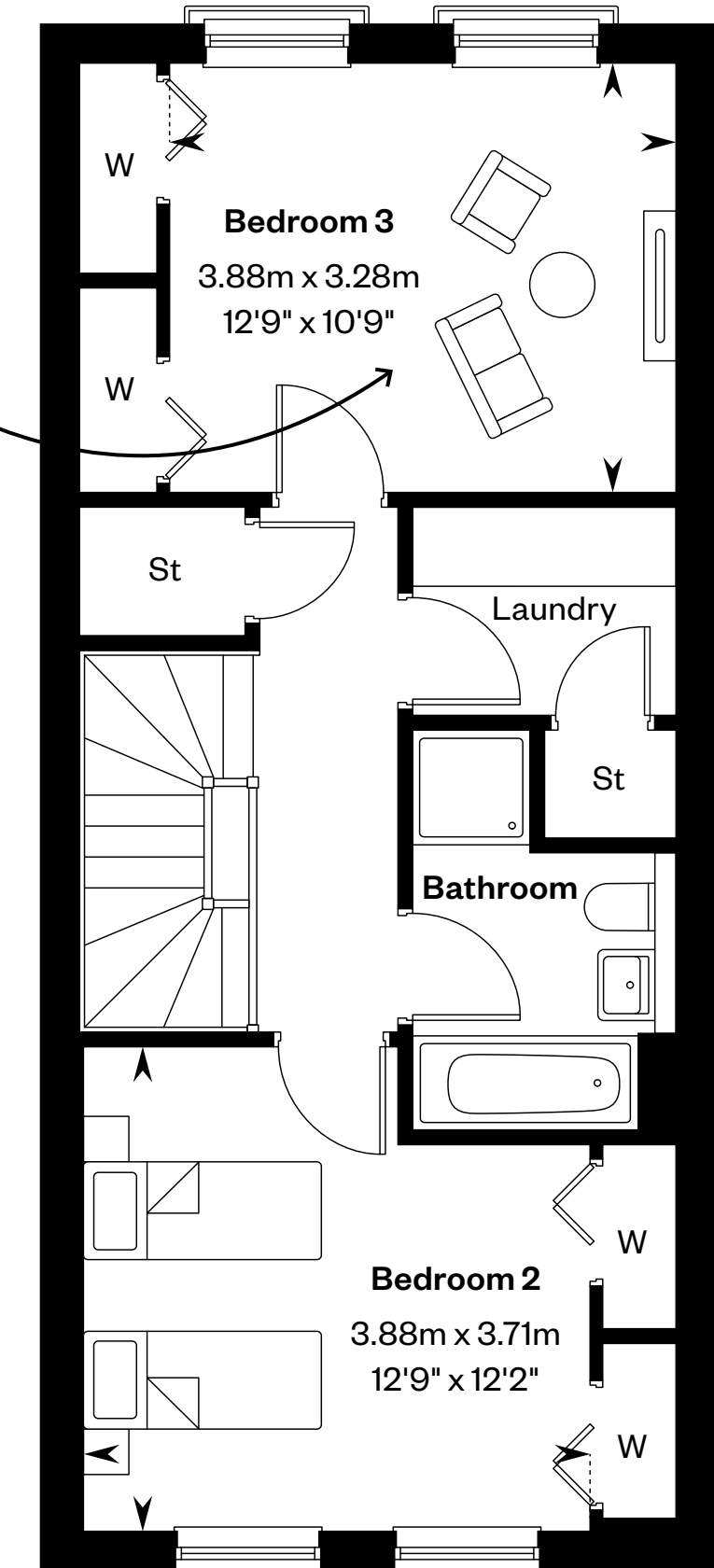
Ground floor

From family celebrations to festive fun, just imagine the memories that can be made in this elegant living area



First floor

Kids can thrive in their dedicated play area while keeping toys in one place



Second floor

keeping work life and family life separate is easy with a dedicated study

Relax while the little ones sleep soundly above you

For plot specific details please speak to a Sales Consultant. Please ask your Sales Consultant for further details. St: Store cupboard. W: Wardrobe.

# What makes our modern townhouses so popular?

That's simple. They're more versatile and flexible, with clever layouts and adaptable spaces over three floors. They're more spacious and stylish, with big en suite bedrooms and fitted wardrobes. They're full of natural light at every level. And they're more manageable and economic.

Come and explore all the townhouses at St Crispin's Court have to offer. We think you'll love it.





Lifestyle photography from a Cala showhome

# Welcome to your new home

St Crispin's Court,  
Watertoun Road, Blackford,  
Edinburgh EH9 3HZ

[Click here to arrange your viewing](#)



IMPORTANT NOTICE TO CUSTOMERS: The Consumer Protection from Unfair Trading Regulations 2008. Cala Homes (East) Limited operates a policy of continual product development and the specifications outlined in this brochure are indicative only. We reserve the right to implement minor changes to the sizes and specifications shown on any plans or drawings in this brochure without warning. Where alterations to the design, construction or materials to be used in the construction of the property would materially alter the internal floor space, appearance or market value of the property, we will ensure that these changes are communicated to potential purchasers. Whilst these particulars are prepared with all due care for the convenience of intending purchasers, the information is intended as a guide. The computer generated images and photographs do not necessarily represent the actual finishings/elevation or treatments, landscaping, furnishings and fittings at this development. Floor plans, dimensions and specifications are correct at the time of print. The illustrated location map is a general guide only. Please note that distances and timings referred to in this brochure are approximate and sourced from Google Maps. For information relating to weather in the area of this development, please refer to the Meteorological Office (www.metoffice.gov.uk). Nothing contained in this brochure shall constitute or form part of any contract. Information contained in this brochure is accurate at time of going to press on 07.09.24. Cala (East) Limited, registered in Scotland company number SC053746. Registered Office: Johnstone House, 52-54 Rose Street, Aberdeen, AB10 1HA. Cala Homes (East) Limited act as an agent for Cala Management Limited - registered office Adam House, 5 Mid New Cultins, Edinburgh, EH11 4DU. Cala Management Limited forms part of the Cala Group Limited.