

# The Arlow

2 bedroom semi detached bungalow



Computer Generated Image - A typical Arlow

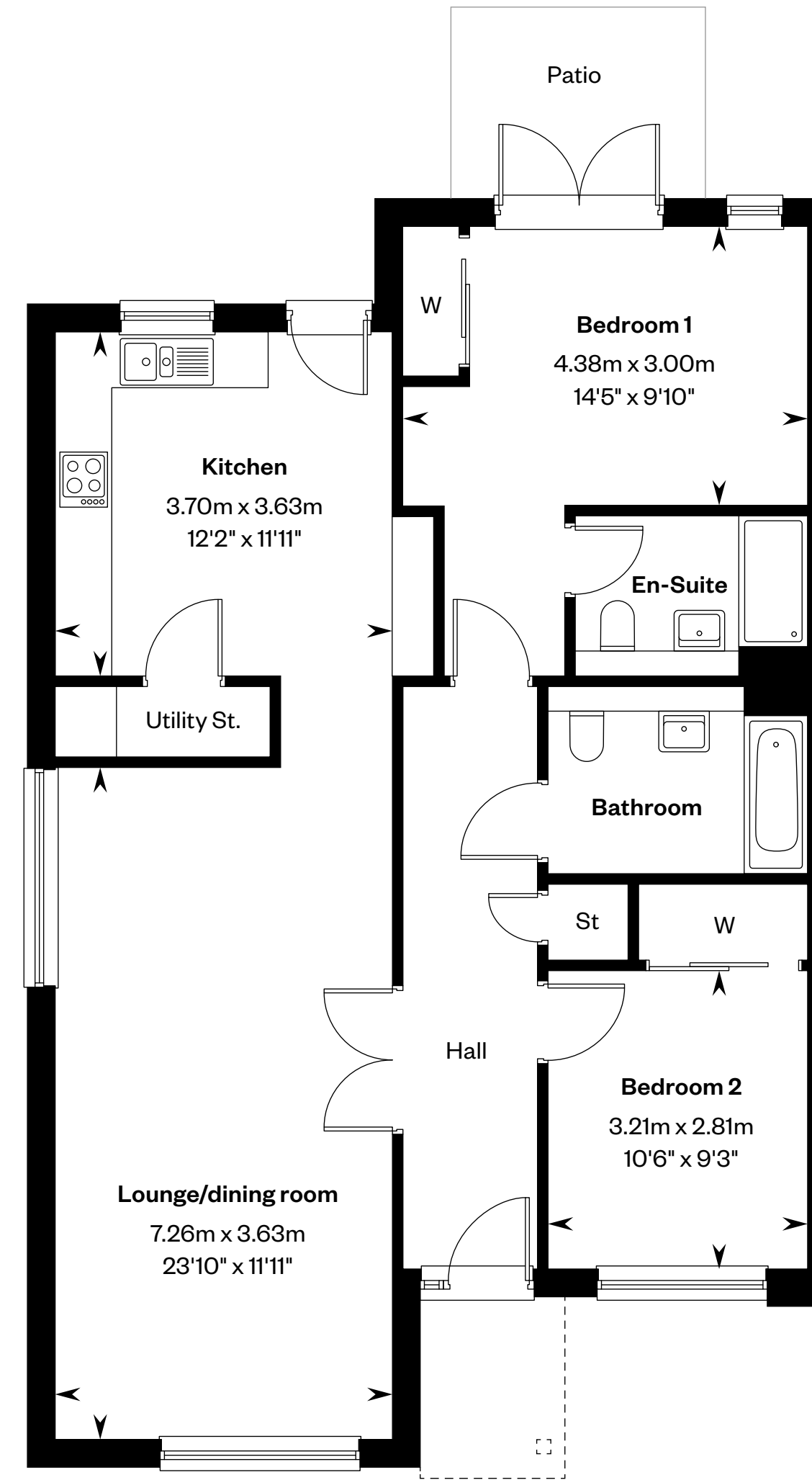
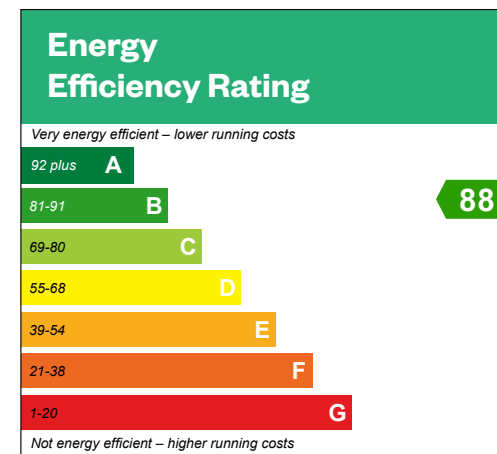


# The Arlow

## 2 bedroom semi detached bungalow

Plots 1, 27, 48, 70, 72, 83 & 89 – as shown

Plots 2, 26, 47, 71, 73, 82 & 88 – handed



Ground floor

Please ask your Sales Consultant for further details. St: Store cupboard. W: Wardrobe.

**IMPORTANT NOTICE TO CUSTOMERS:** The Consumer Protection from Unfair Trading Regulations 2008. Cala Homes (West) Limited operates a policy of continual product development and the specifications outlined in this brochure are indicative only. The computer generated images and photographs do not necessarily represent the actual finishings/elevation or treatments, landscaping, furnishings and fittings at this development. Information contained is accurate at date of publication on 23.09.24. See the main brochure for the full Consumer Protection statement.



# The Barnes

3 bedroom terraced and semi detached home



Computer Generated Image - A typical Barnes

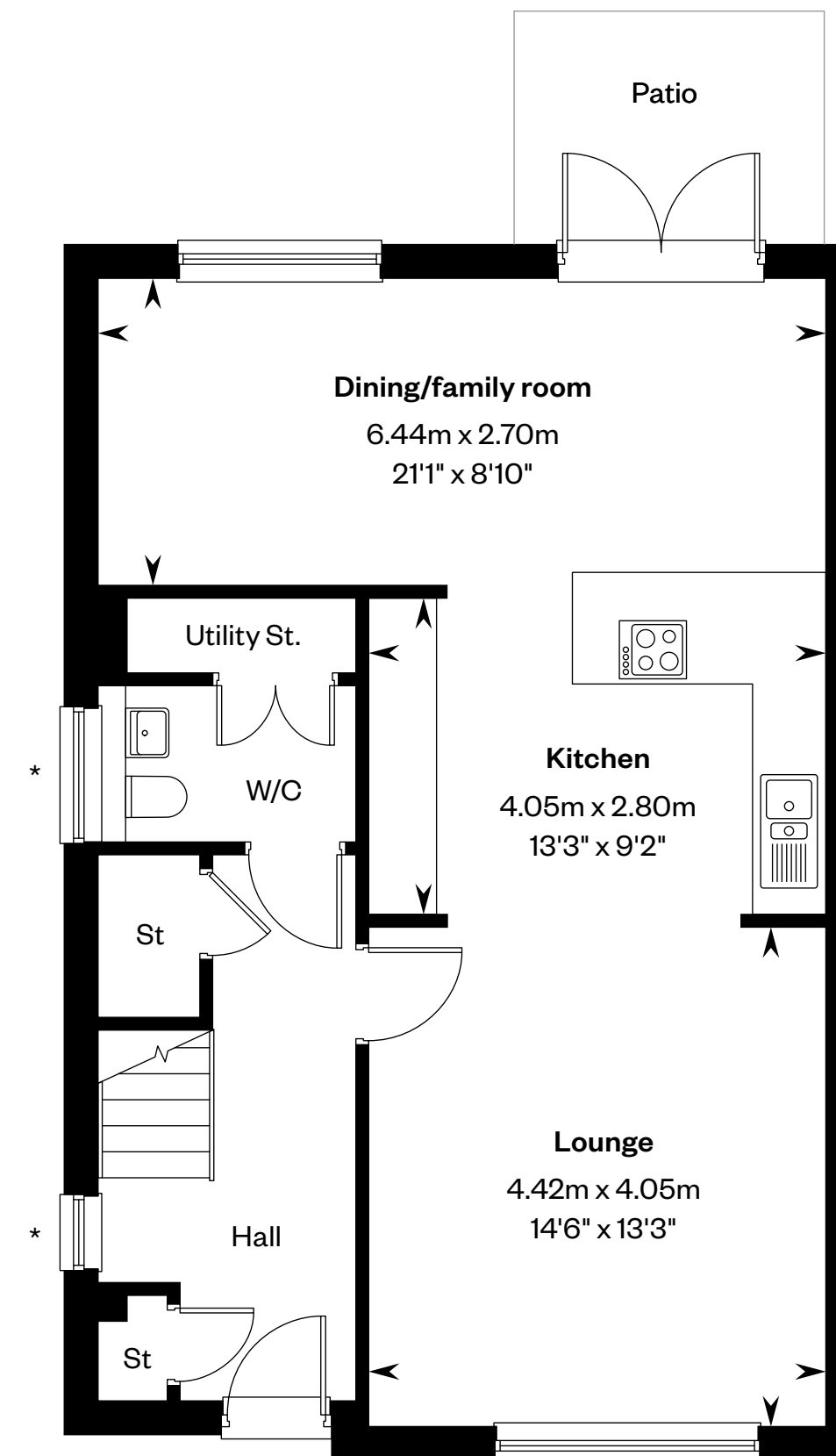
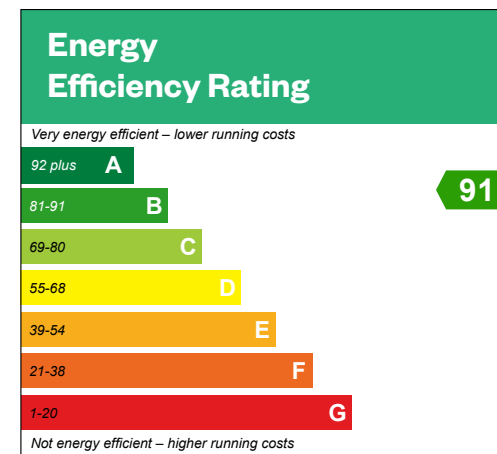


# The Barnes

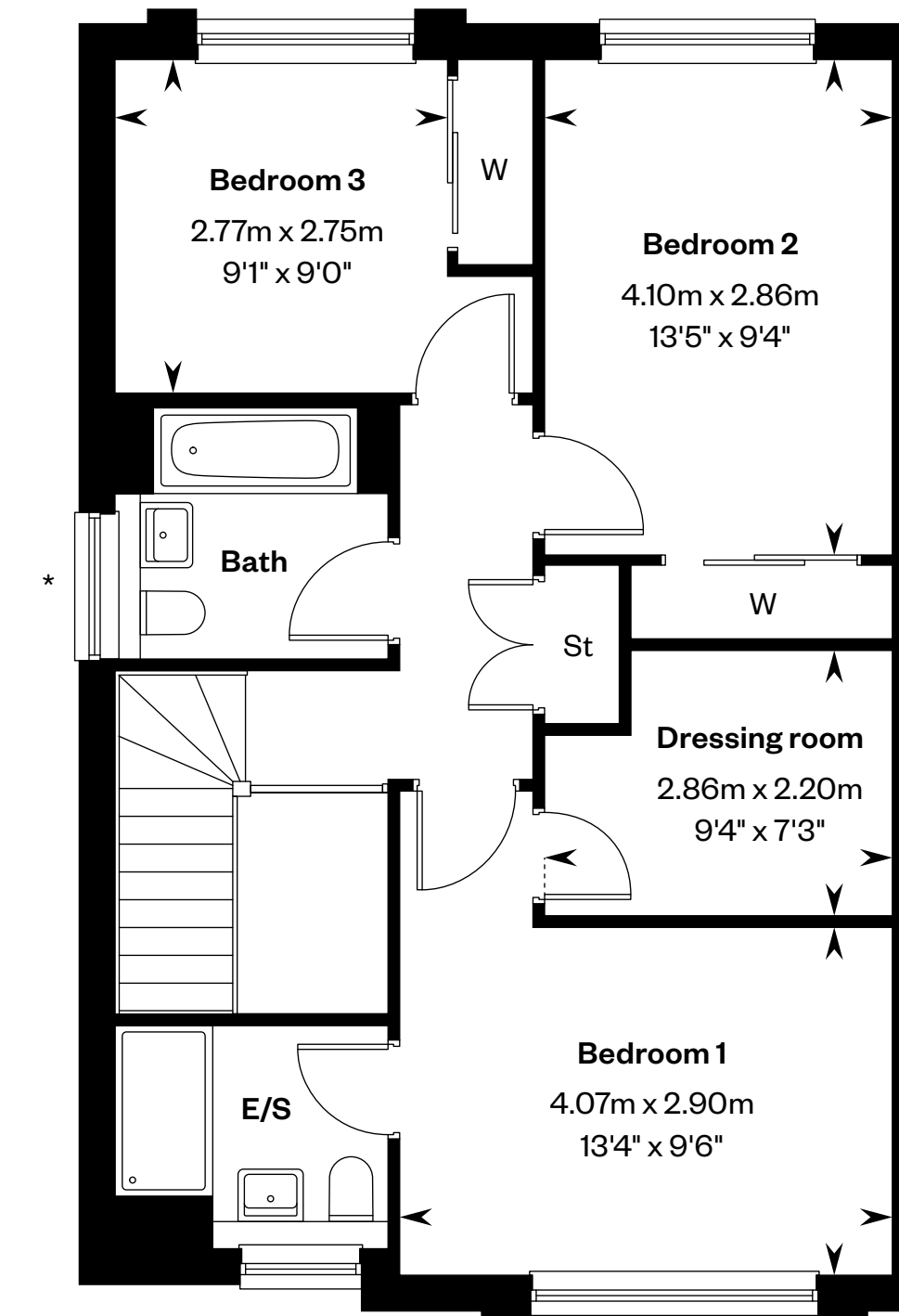
## 3 bedroom terraced and semi detached home

Plots 7, 8, 11, 12, 76, 77, 80, 81, 85 & 87 – as shown

Plots 9, 10, 13, 14, 74, 75, 78, 79, 84 & 86 – handed



Ground floor



First floor

\*Please note that windows are not present in mid terraced homes. Please ask your Sales Consultant for further details. E/S: En-Suite. St: Store cupboard. W: Wardrobe.

IMPORTANT NOTICE TO CUSTOMERS: The Consumer Protection from Unfair Trading Regulations 2008. Cala Homes (West) Limited operates a policy of continual product development and the specifications outlined in this brochure are indicative only. The computer generated images and photographs do not necessarily represent the actual finishings/elevation or treatments, landscaping, furnishings and fittings at this development. Information contained is accurate at date of publication on 23.09.24. See the main brochure for the full Consumer Protection statement.



# The Cleland

4 bedroom detached home



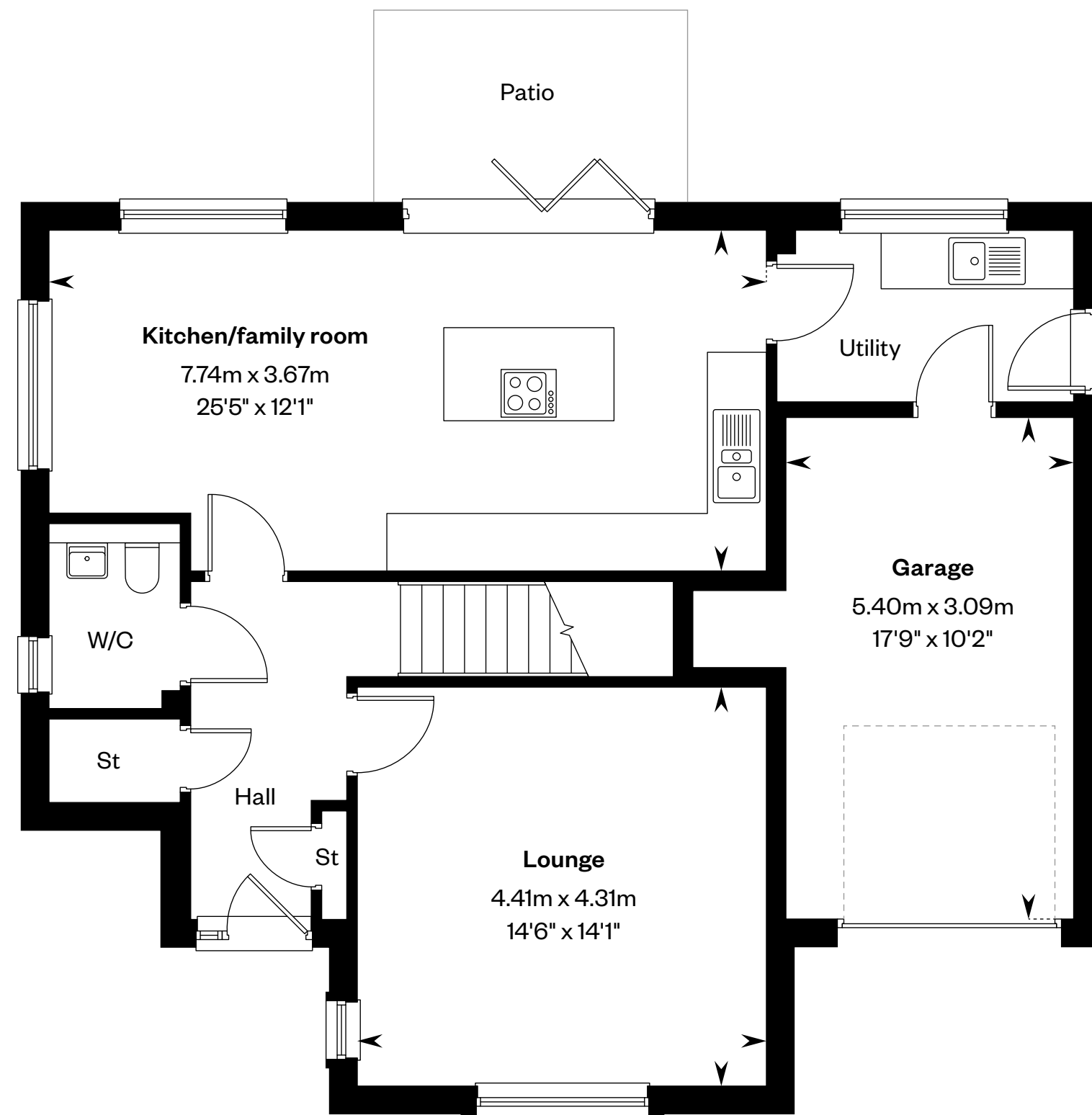
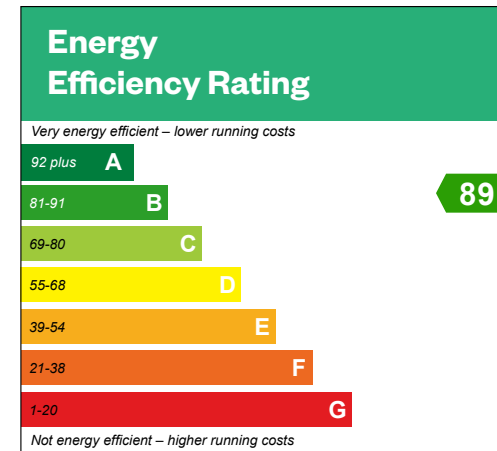


# The Cleland

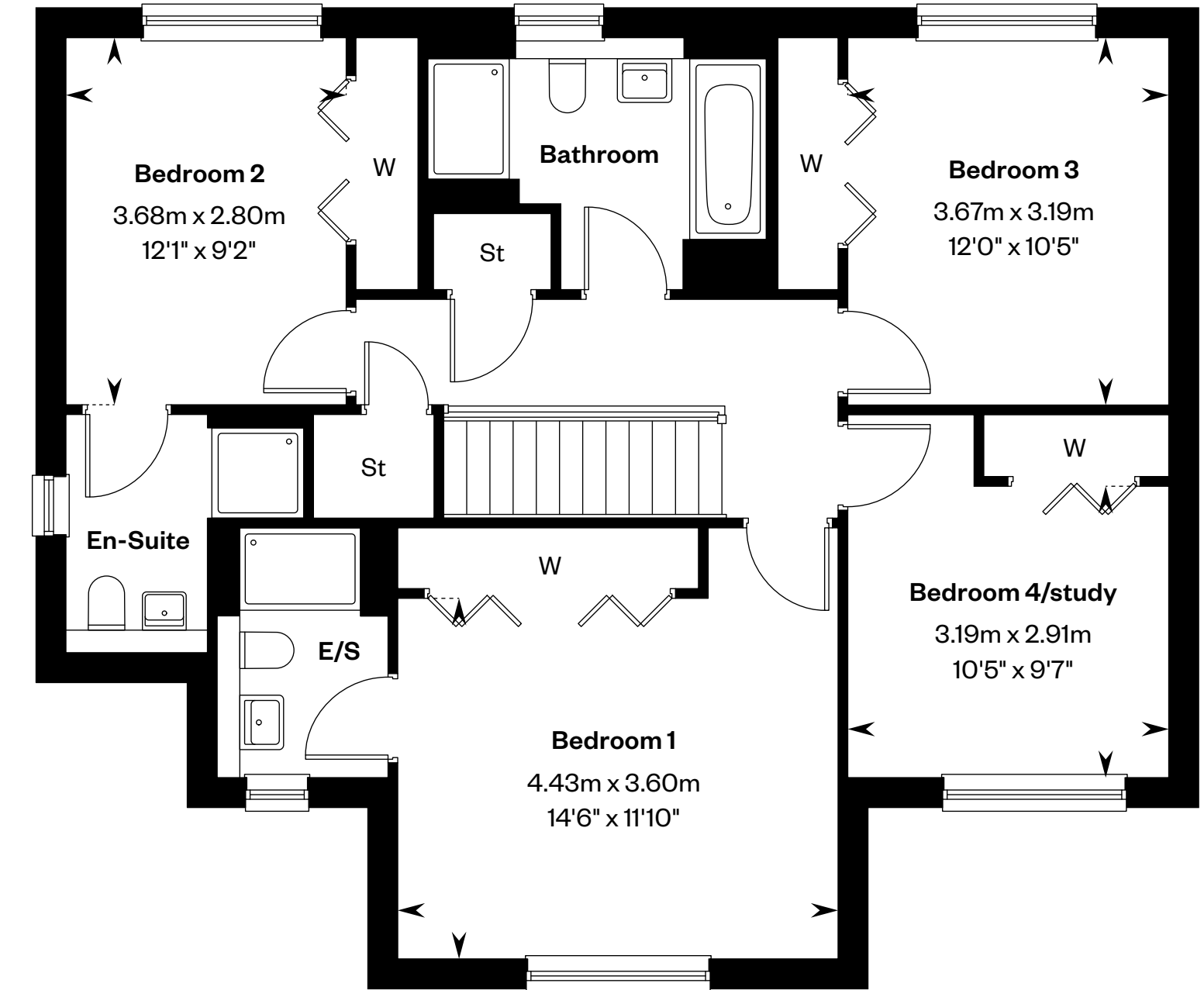
4 bedroom detached home

Plot 18 – as shown

Plots 57 & 65 – handed



Ground floor



First floor

Please ask your Sales Consultant for further details. E/S: En-Suite. St: Store cupboard. W: Wardrobe.

IMPORTANT NOTICE TO CUSTOMERS: The Consumer Protection from Unfair Trading Regulations 2008. Cala Homes (West) Limited operates a policy of continual product development and the specifications outlined in this brochure are indicative only. The computer generated images and photographs do not necessarily represent the actual finishings/elevation or treatments, landscaping, furnishings and fittings at this development. Information contained is accurate at date of publication on 23.09.24. See the main brochure for the full Consumer Protection statement.



# The Darroch

5 bedroom detached home



Computer Generated Image - A typical Darroch

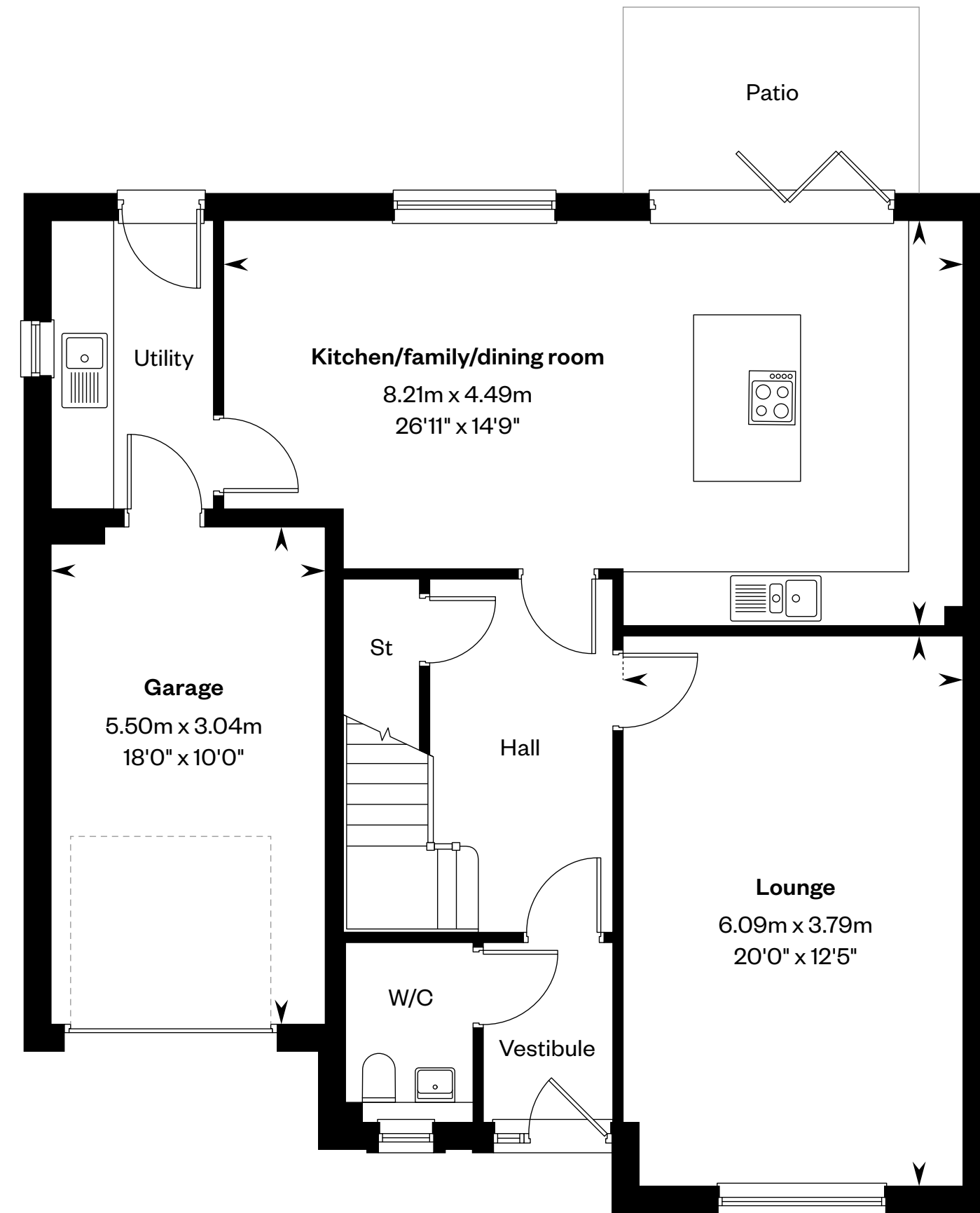
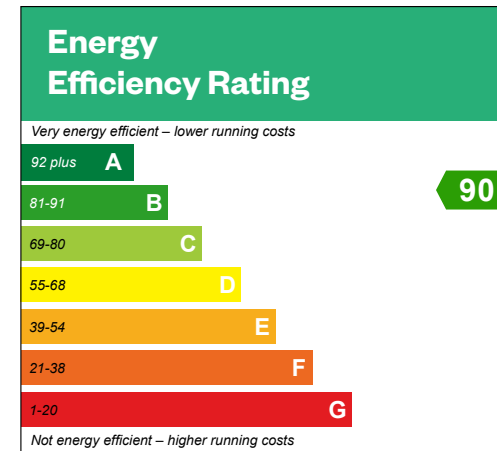


# The Darroch

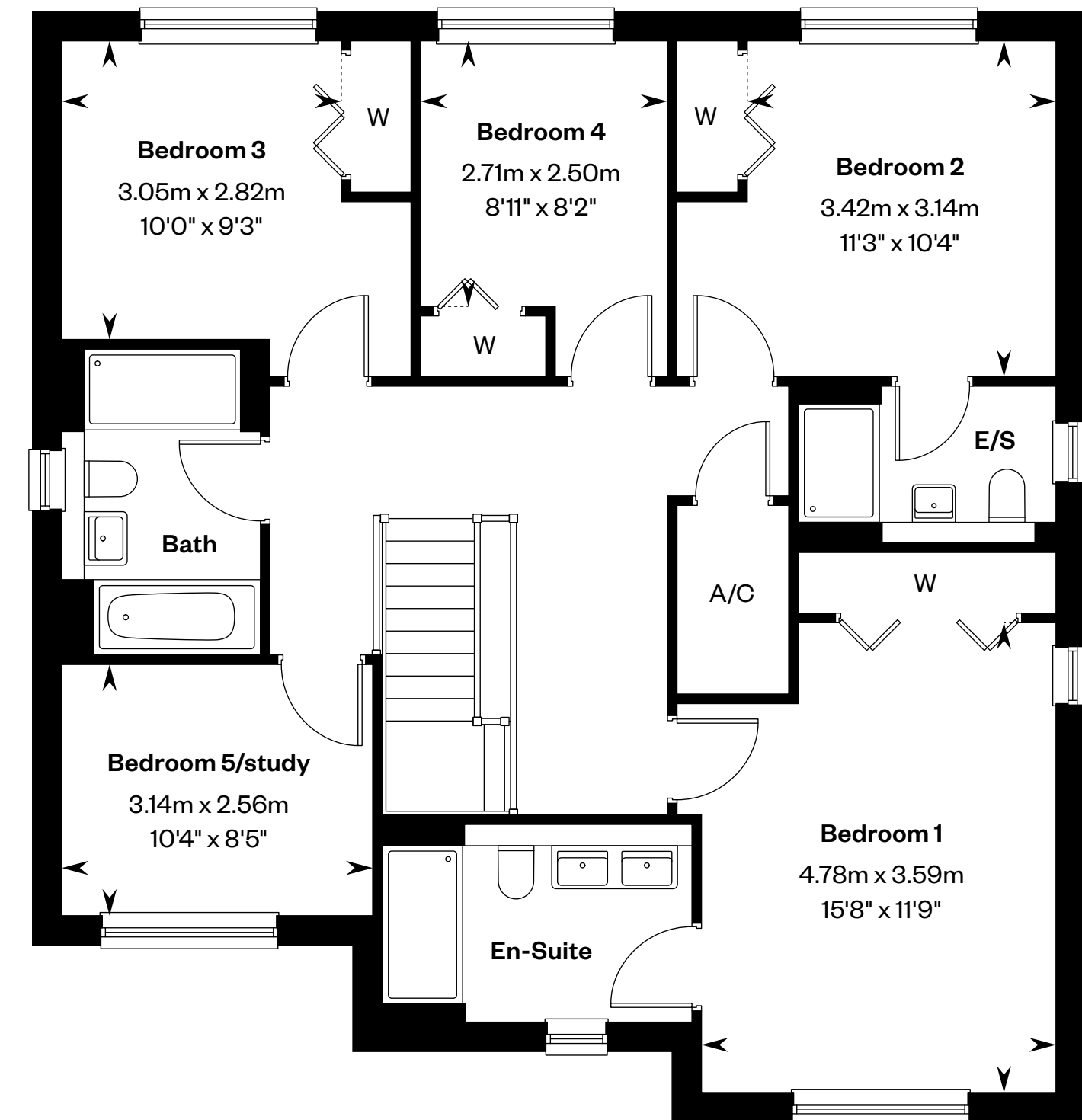
5 bedroom detached home

Plots 58 & 64 – as shown

Plots 6 & 17 – handed



Ground floor



First floor

Please ask your Sales Consultant for further details. A/C: Airing cupboard. E/S: En-Suite. St: Store cupboard. W: Wardrobe.

IMPORTANT NOTICE TO CUSTOMERS: The Consumer Protection from Unfair Trading Regulations 2008. Cala Homes (West) Limited operates a policy of continual product development and the specifications outlined in this brochure are indicative only. The computer generated images and photographs do not necessarily represent the actual finishings/elevation or treatments, landscaping, furnishings and fittings at this development. Information contained is accurate at date of publication on 23.09.24. See the main brochure for the full Consumer Protection statement.



# The Garvie

5 bedroom detached home



Computer Generated Image - A typical Garvie

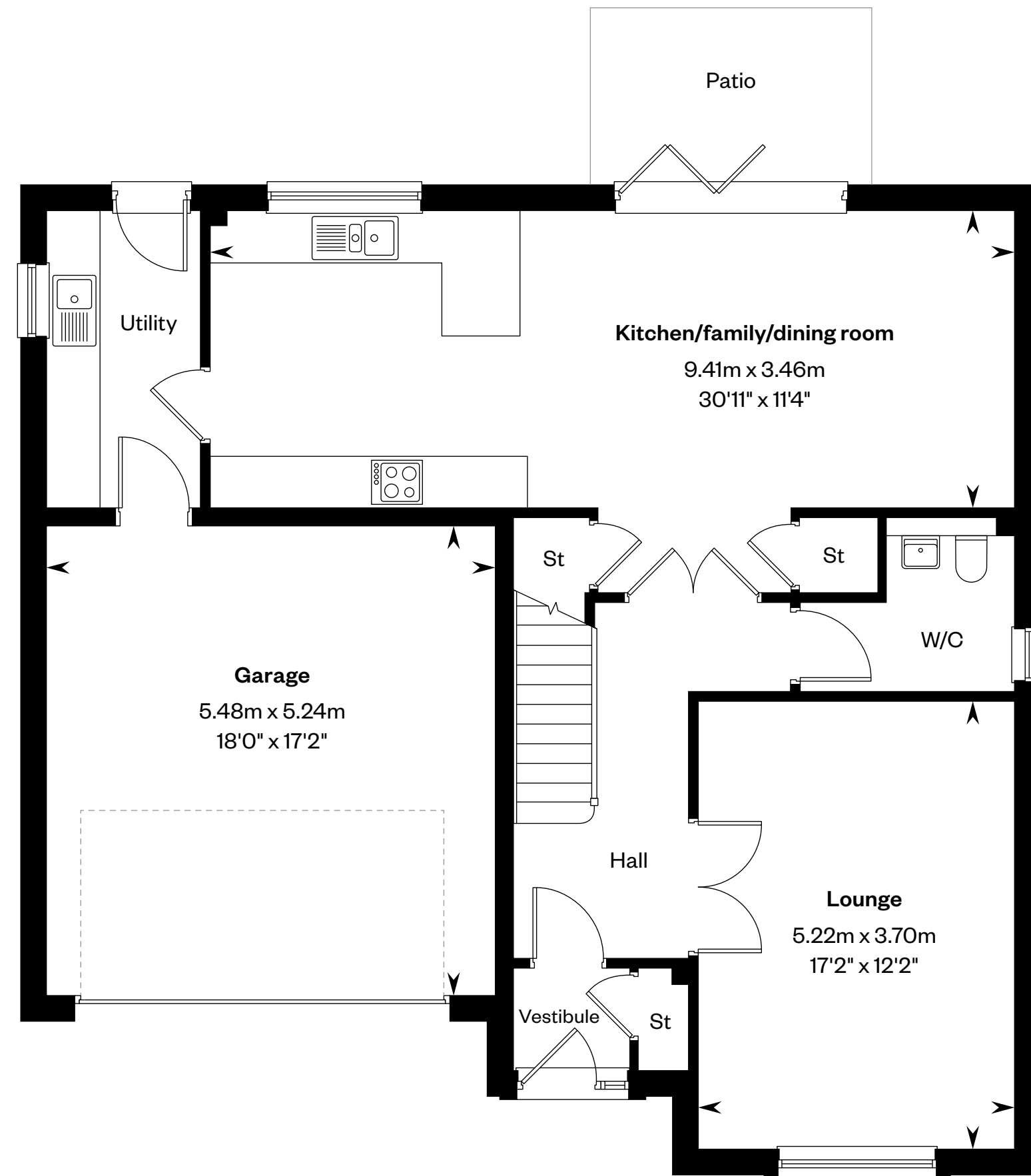
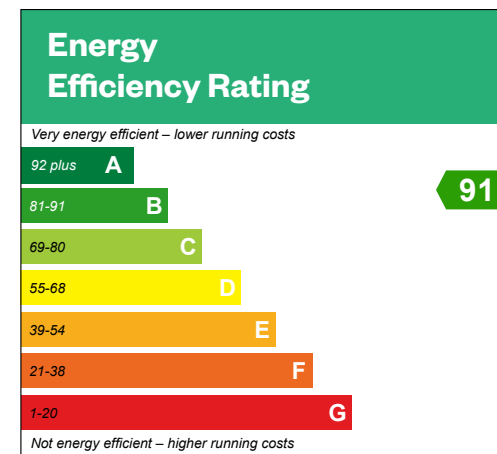


# The Garvie

5 bedroom detached home

Plots 15, 19, 22 & 35 – as shown

Plots 5, 40, 60 & 61 – handed



Ground floor



First floor

Please ask your Sales Consultant for further details. A/C: Airing cupboard. E/S: En-Suite. St: Store cupboard. W: Wardrobe. -----: Dotted lines denote reduced head height.

IMPORTANT NOTICE TO CUSTOMERS: The Consumer Protection from Unfair Trading Regulations 2008. Cala Homes (West) Limited operates a policy of continual product development and the specifications outlined in this brochure are indicative only. The computer generated images and photographs do not necessarily represent the actual finishings/elevation or treatments, landscaping, furnishings and fittings at this development. Information contained is accurate at date of publication on 23.09.24. See the main brochure for the full Consumer Protection statement.



# The Logan

5 bedroom detached home



Computer Generated Image - A typical Logan

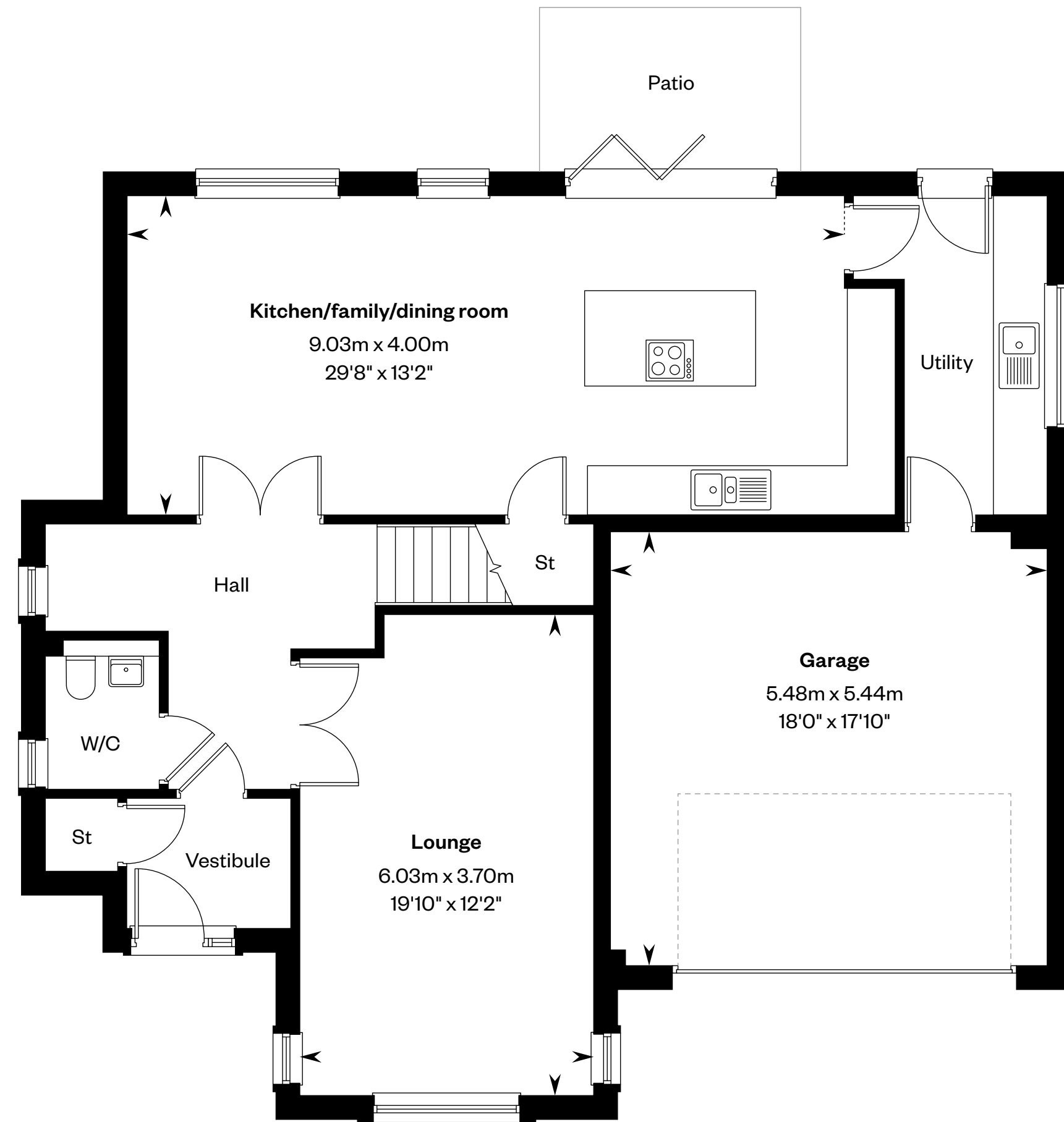
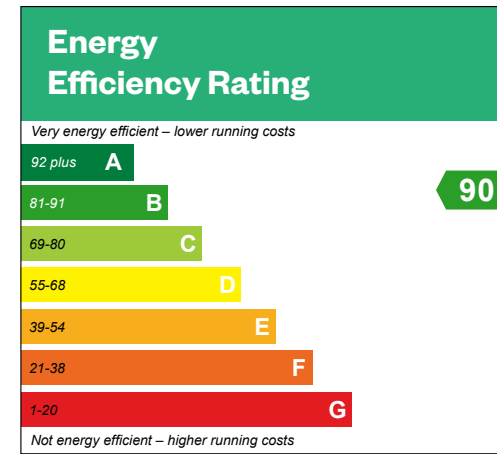


# The Logan

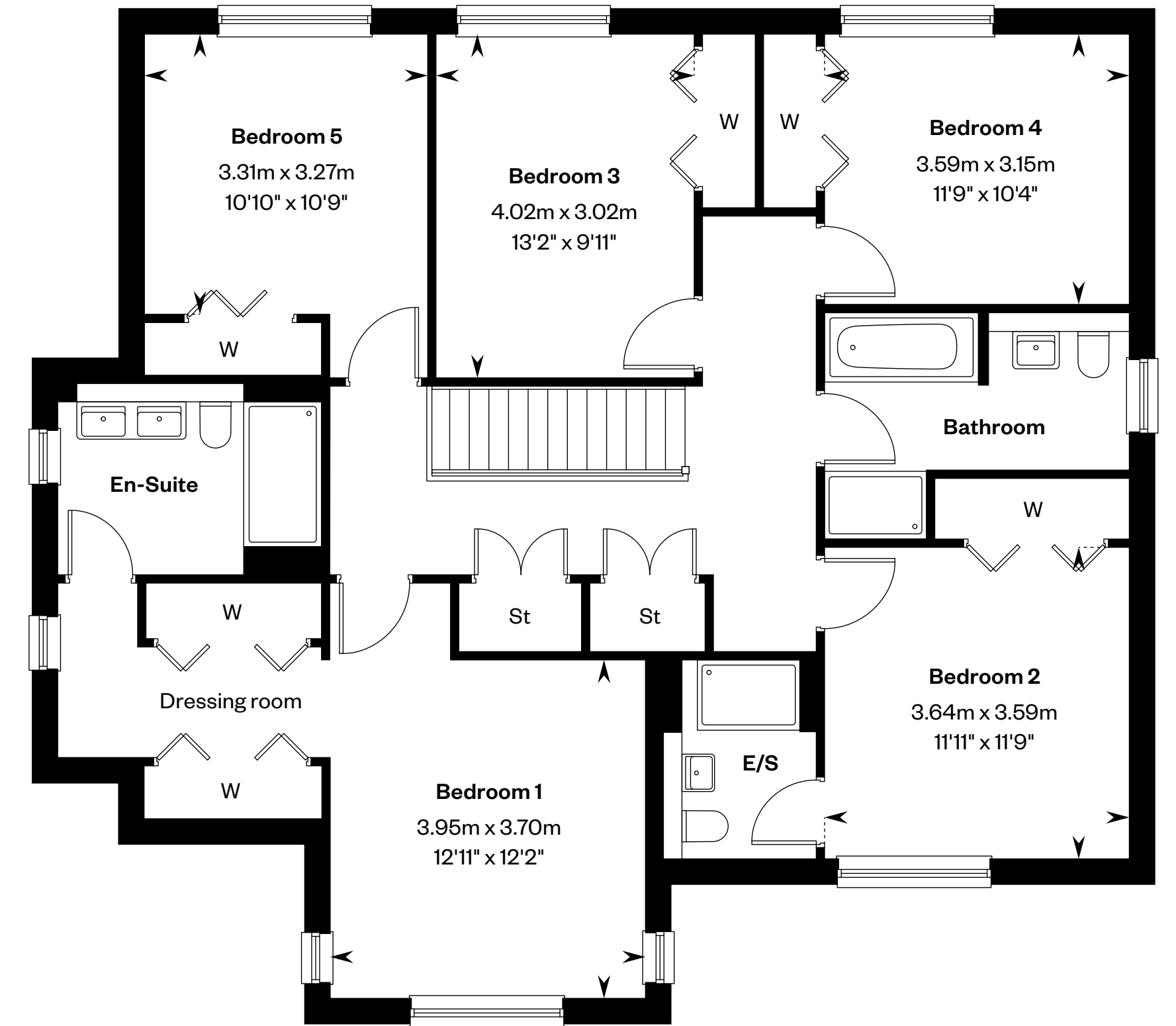
5 bedroom detached home

Plots 20, 41 & 50 – as shown

Plots 24, 34, 56 & 63 – handed



Ground floor



First floor

Please ask your Sales Consultant for further details. E/S: En-Suite. St: Store cupboard. W: Wardrobe.

IMPORTANT NOTICE TO CUSTOMERS: The Consumer Protection from Unfair Trading Regulations 2008. Cala Homes (West) Limited operates a policy of continual product development and the specifications outlined in this brochure are indicative only. The computer generated images and photographs do not necessarily represent the actual finishings/elevation or treatments, landscaping, furnishings and fittings at this development. Information contained is accurate at date of publication on 23.09.24. See the main brochure for the full Consumer Protection statement.



# The Lewis

5 bedroom detached home



Computer Generated Image - A typical Lewis

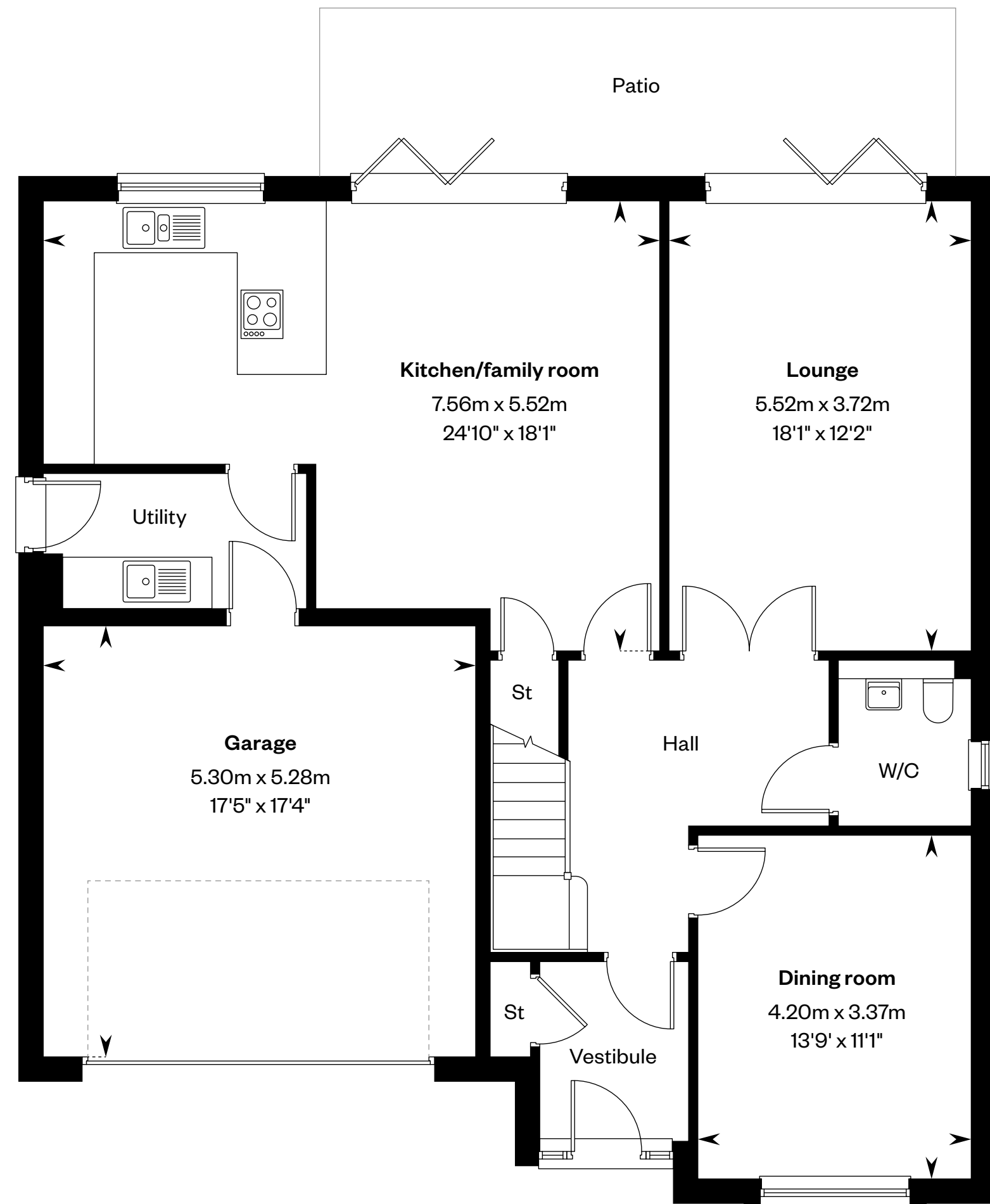
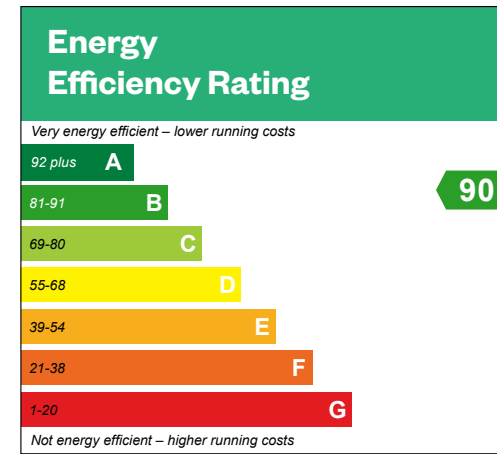


# The Lewis

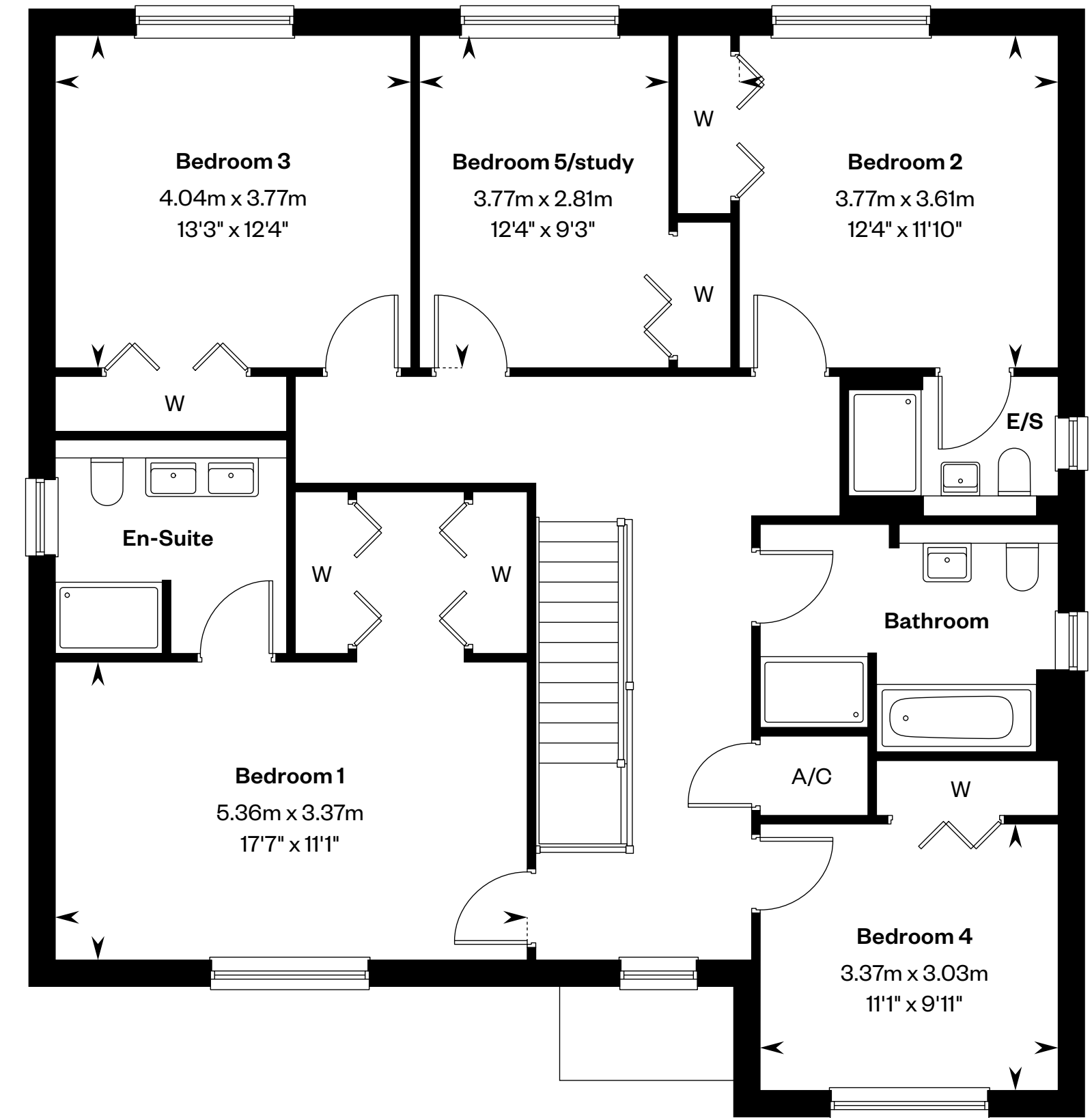
5 bedroom detached home

Plots 59 & 62 – as shown

Plot 16 – handed



Ground floor



First floor

Please ask your Sales Consultant for further details. A/C: Airing cupboard. E/S: En-Suite. St: Store cupboard. W: Wardrobe.

IMPORTANT NOTICE TO CUSTOMERS: The Consumer Protection from Unfair Trading Regulations 2008. Cala Homes (West) Limited operates a policy of continual product development and the specifications outlined in this brochure are indicative only. The computer generated images and photographs do not necessarily represent the actual finishings/elevation or treatments, landscaping, furnishings and fittings at this development. Information contained is accurate at date of publication on 23.09.24. See the main brochure for the full Consumer Protection statement.



# The MacRae

5 bedroom detached home with study and accommodation over garage



Computer Generated Image - A typical MacRae

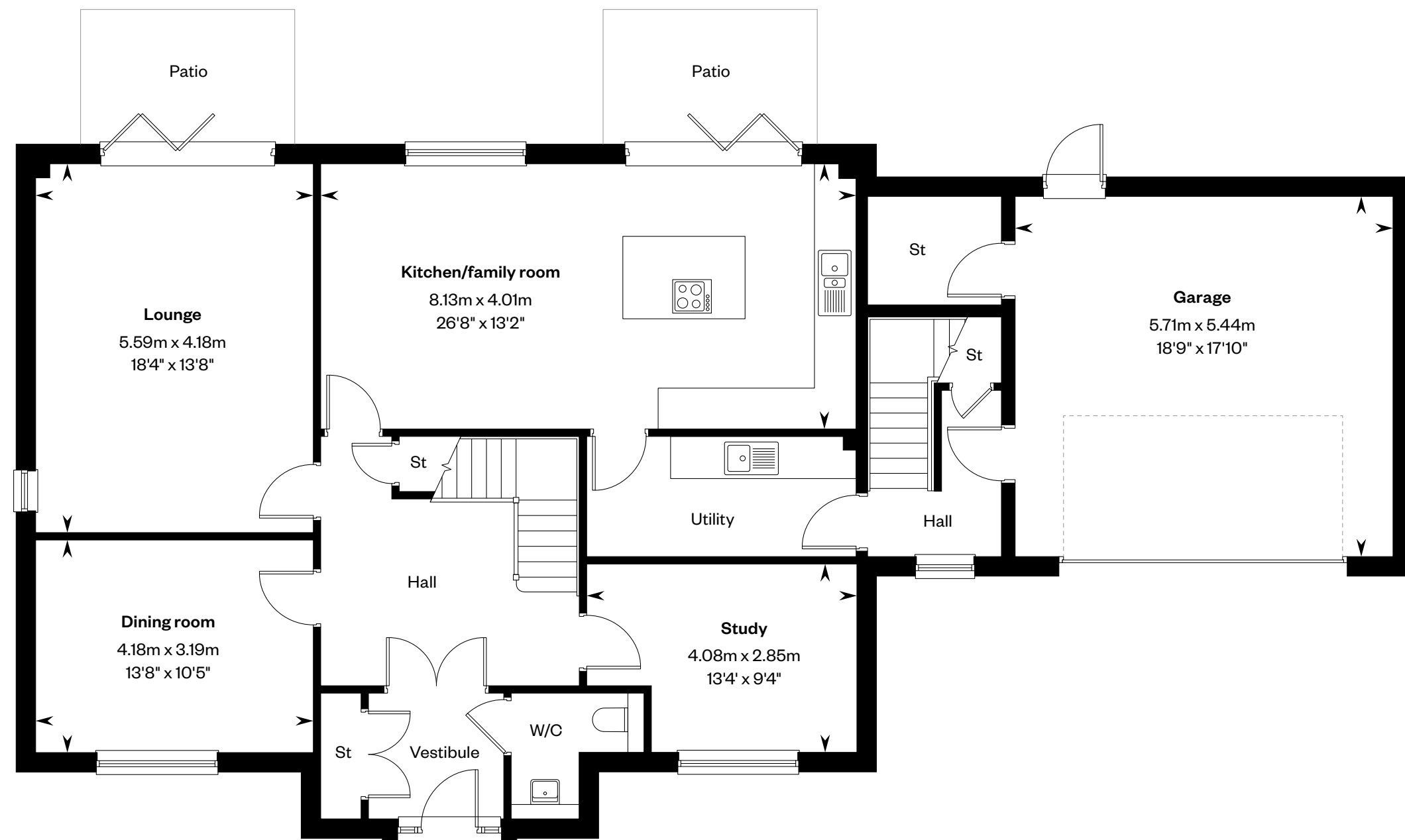
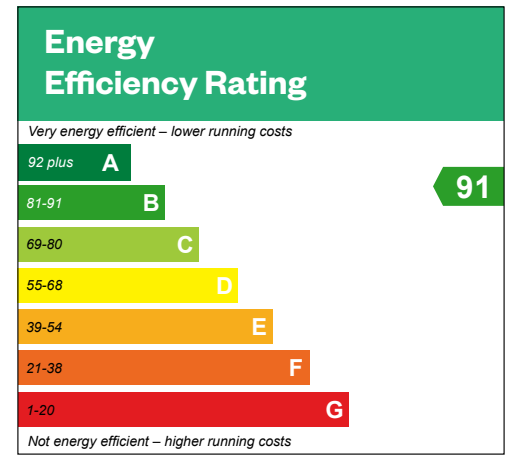


# The MacRae

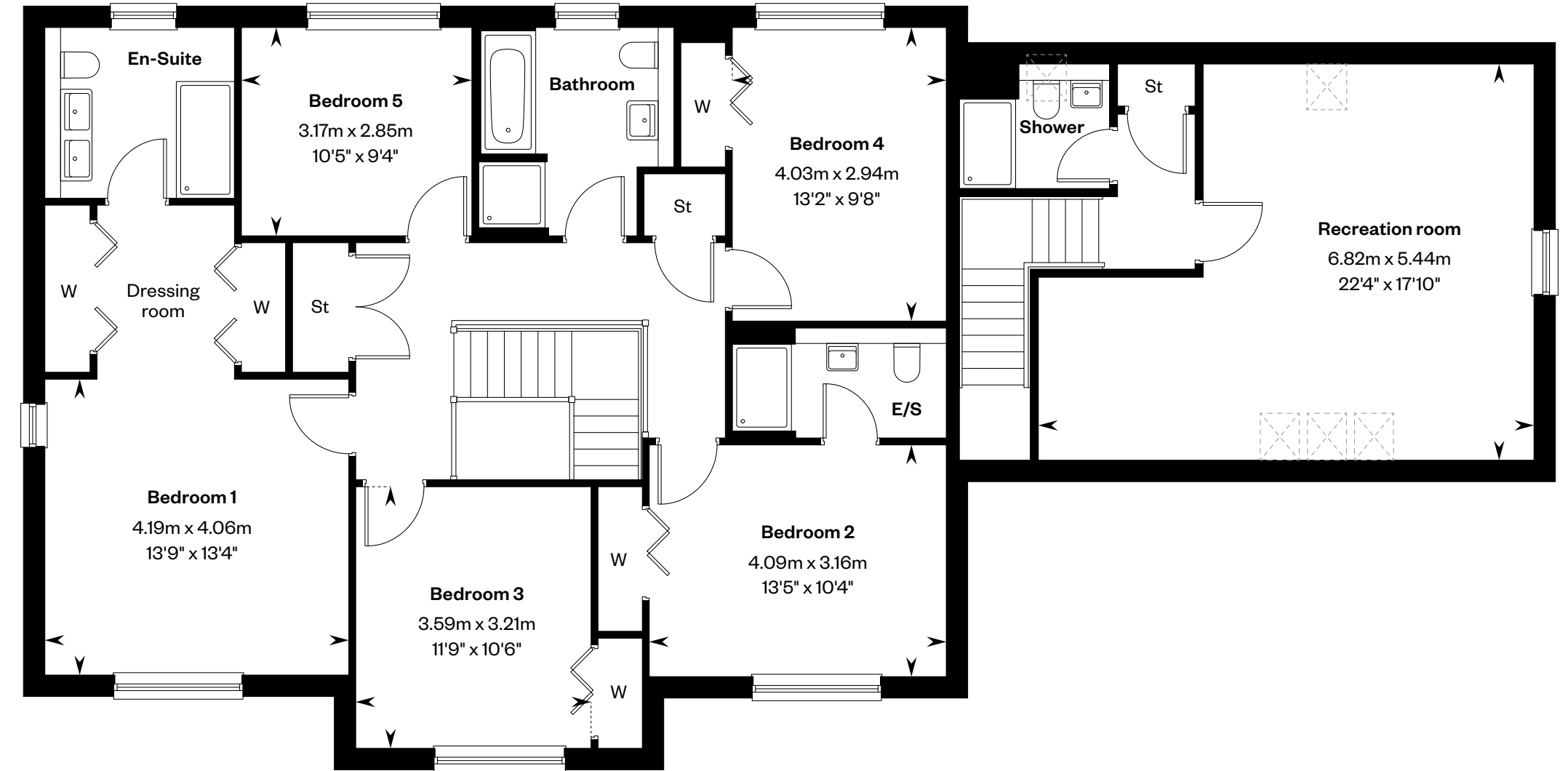
**5 bedroom detached home with study and accommodation over garage**

Plots 32, 45 & 54 – as shown

Plot 43 – handed



Ground floor



First floor

Please ask your Sales Consultant for further details. E/S: En-Suite. St: Store cupboard. W: Wardrobe. ☒: Roof light/velux window.

**IMPORTANT NOTICE TO CUSTOMERS:** The Consumer Protection from Unfair Trading Regulations 2008. Cala Homes (West) Limited operates a policy of continual product development and the specifications outlined in this brochure are indicative only. The computer generated images and photographs do not necessarily represent the actual finishings/elevation or treatments, landscaping, furnishings and fittings at this development. Information contained is accurate at date of publication on 23.09.24. See the main brochure for the full Consumer Protection statement.



# The MacRae Studio

5 bedroom detached home with study and detached accommodation over garage



Computer Generated Image - A typical MacRae Studio

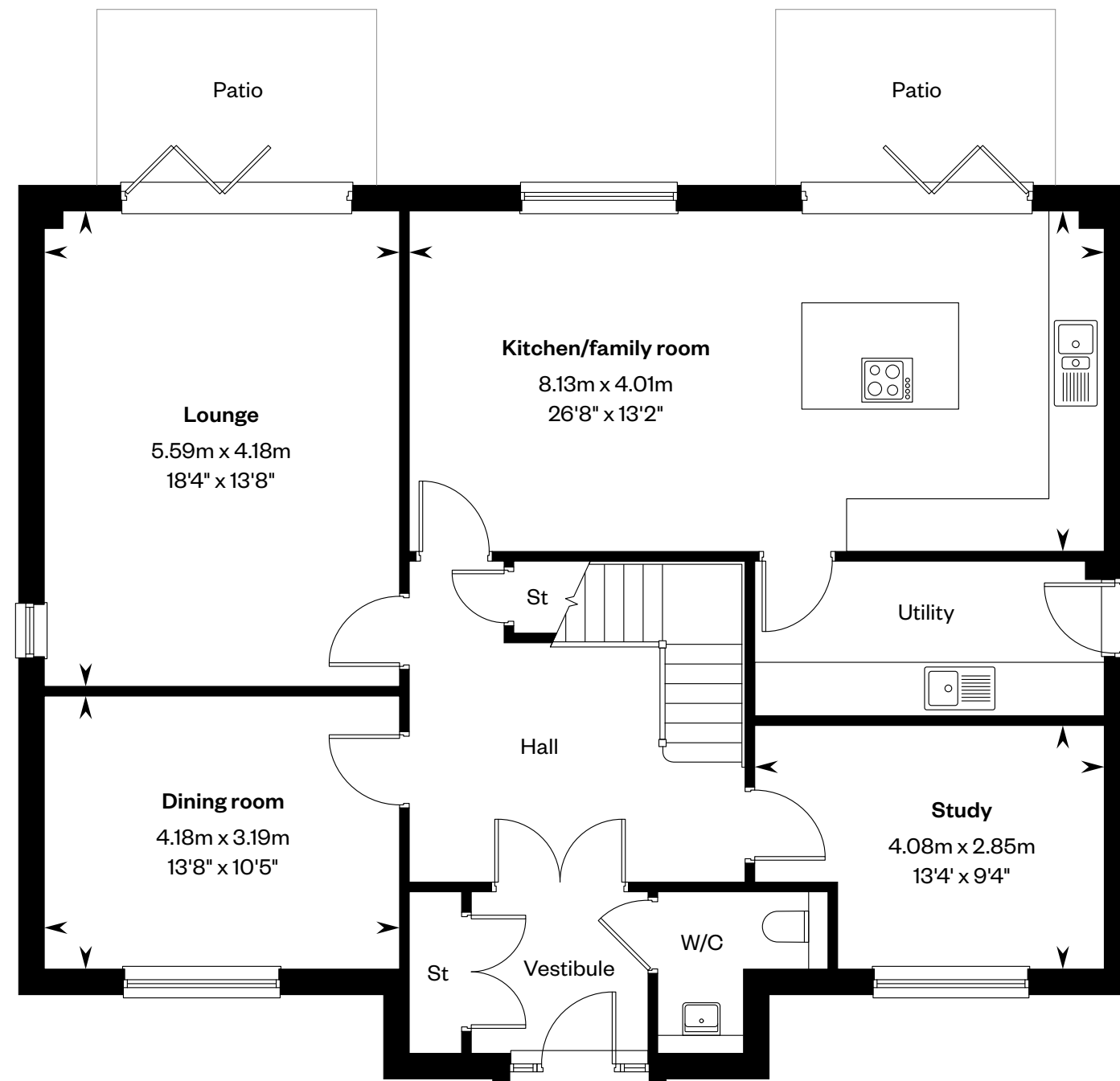
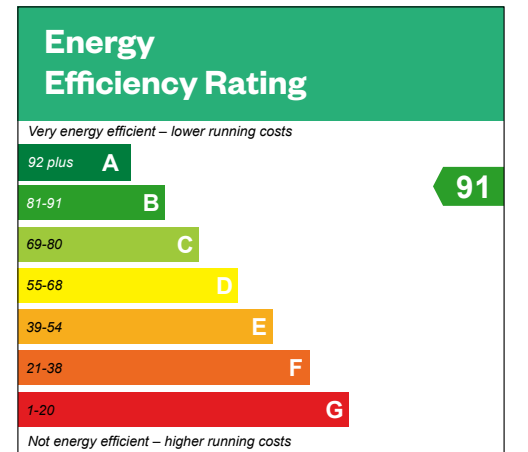


# The MacRae Studio

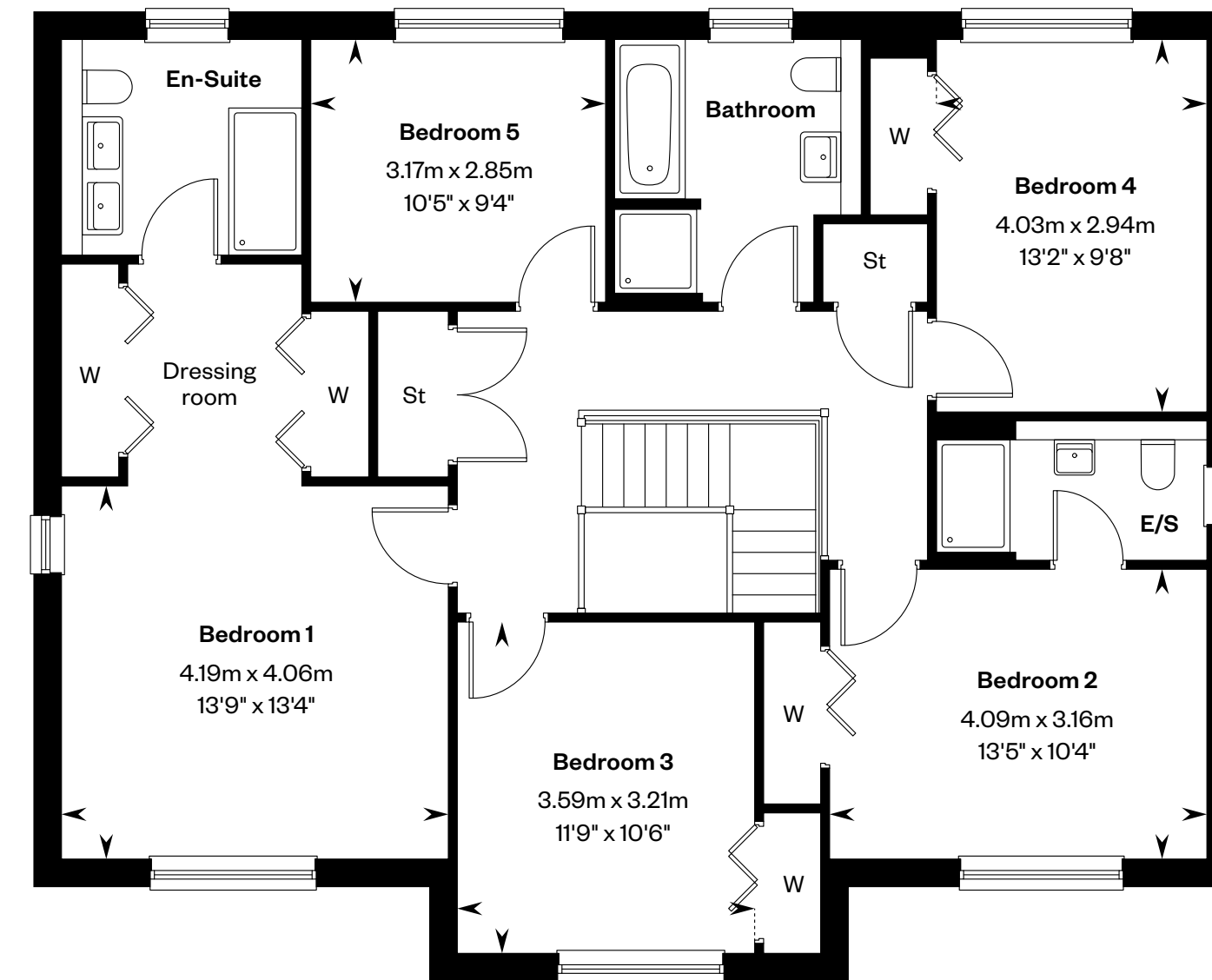
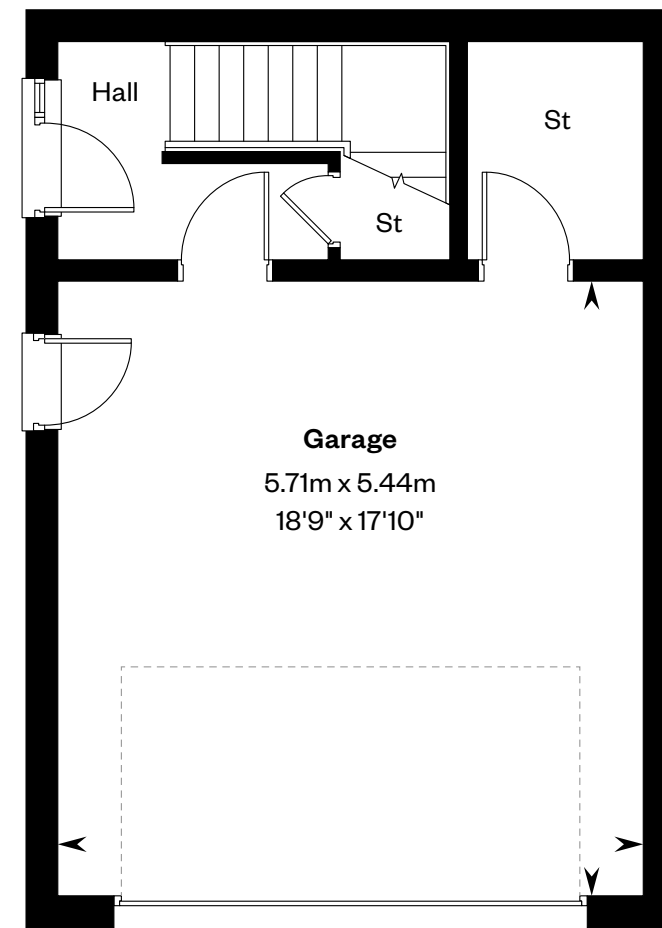
5 bedroom detached home with study and detached accommodation over garage

Plot 36 – as shown

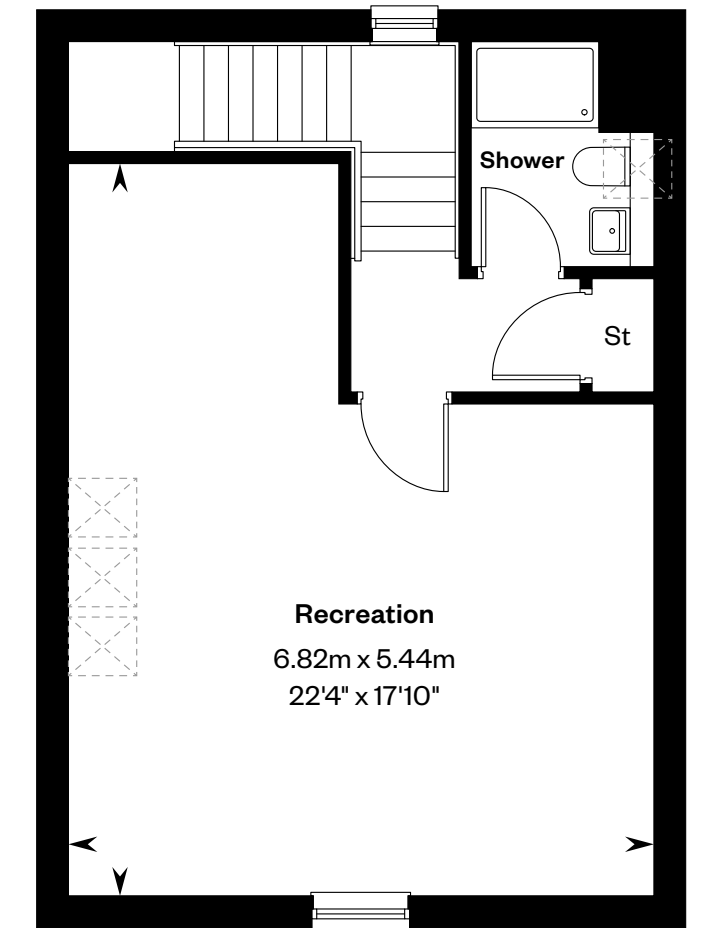
Plot 39 – handed



Ground floor



First floor



Please ask your Sales Consultant for further details. E/S: En-Suite. St: Store cupboard. W: Wardrobe. ☒: Roof light/velux window.

IMPORTANT NOTICE TO CUSTOMERS: The Consumer Protection from Unfair Trading Regulations 2008. Cala Homes (West) Limited operates a policy of continual product development and the specifications outlined in this brochure are indicative only. The computer generated images and photographs do not necessarily represent the actual finishings/elevation or treatments, landscaping, furnishings and fittings at this development. Information contained is accurate at date of publication on 23.09.24. See the main brochure for the full Consumer Protection statement.



# The Melville

5 bedroom detached home



Computer Generated Image - A typical Melville

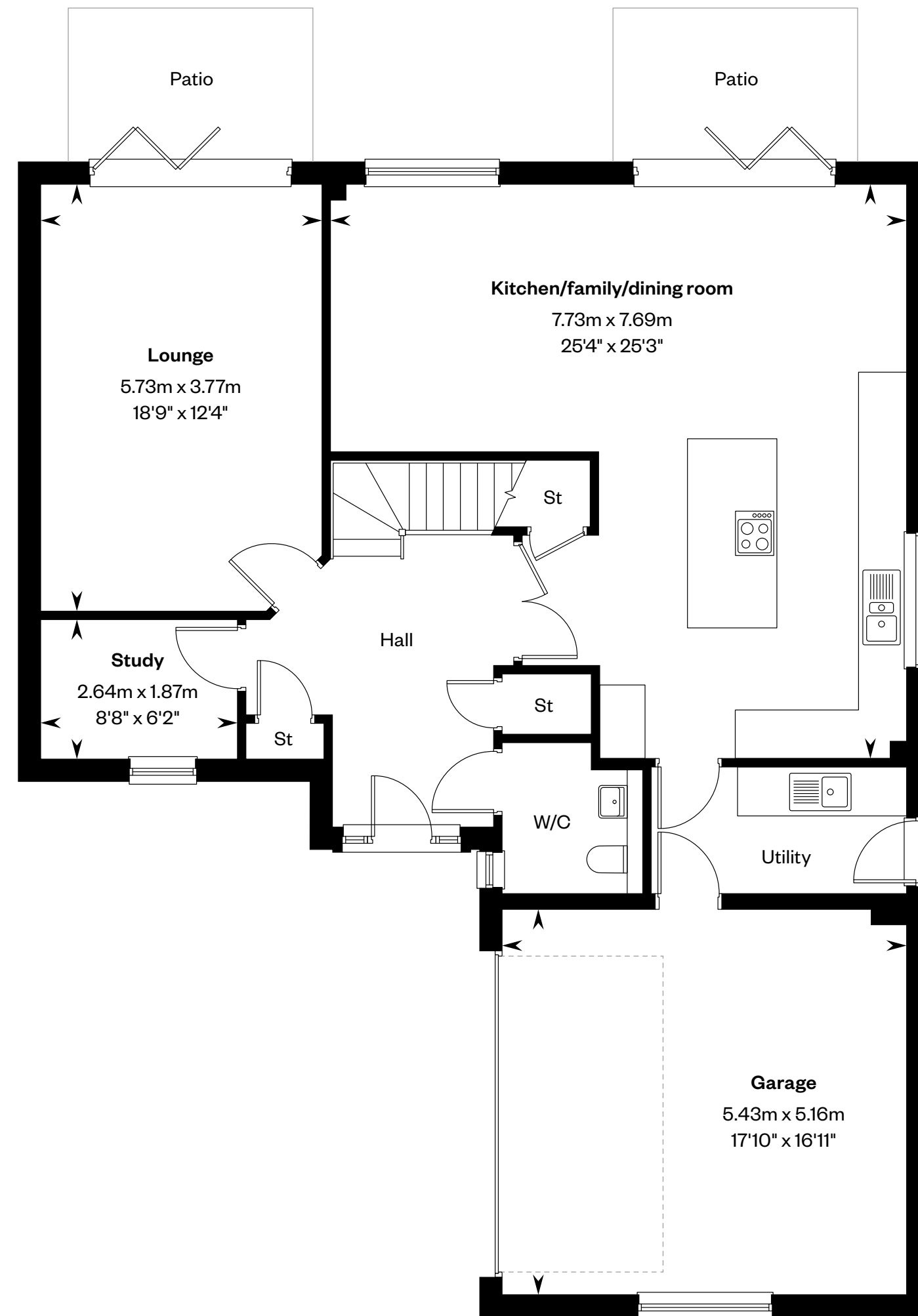
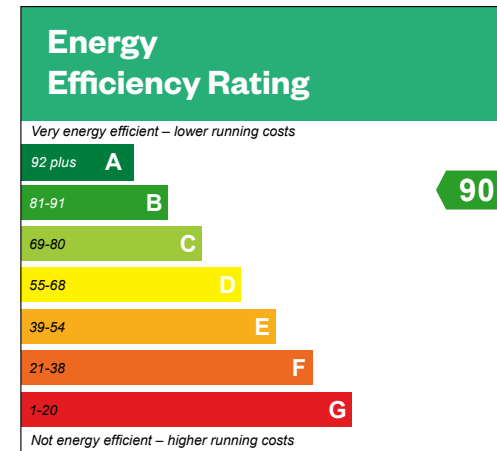


# The Melville

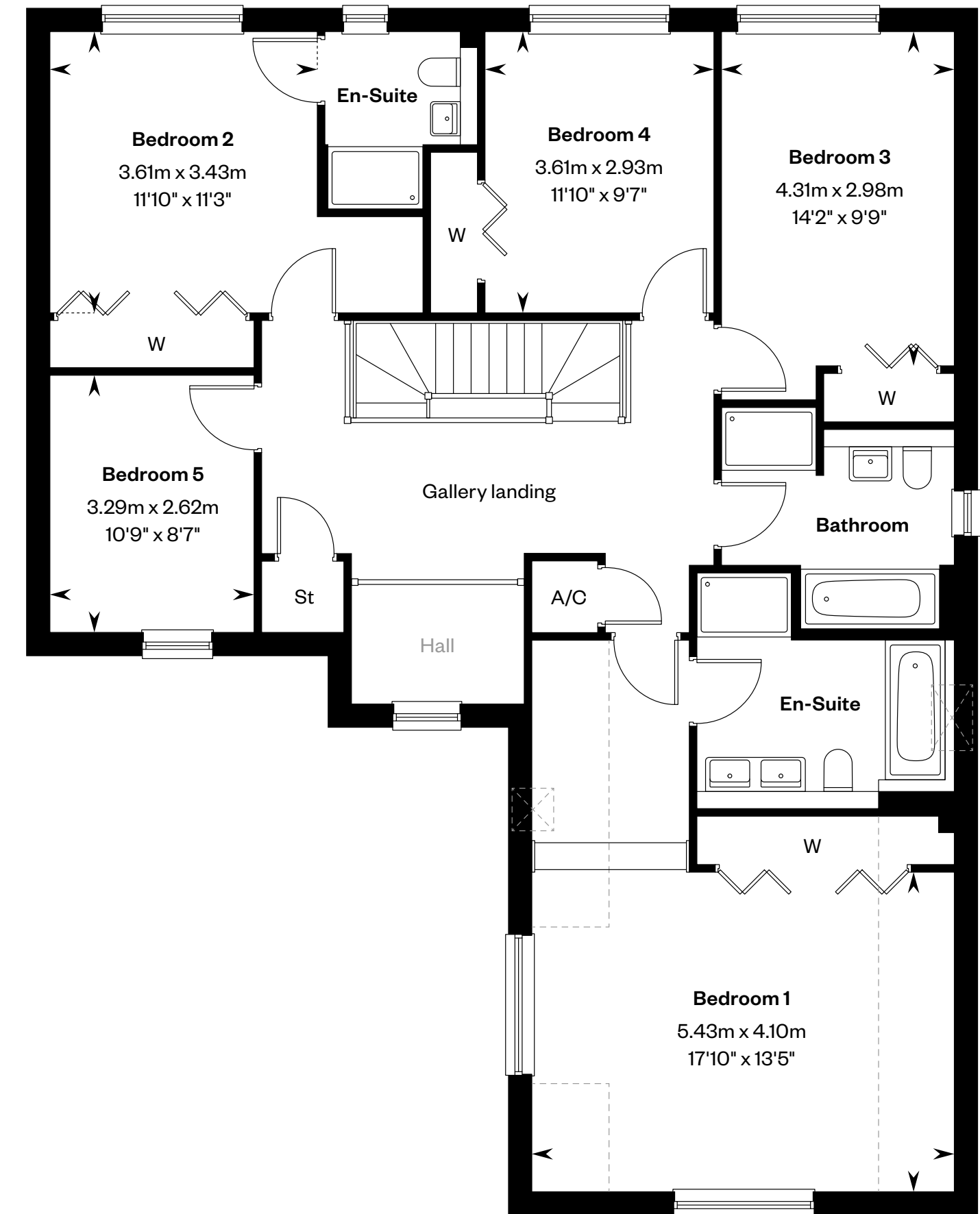
5 bedroom detached home

Plots 3, 28, 51, 67 & 69 – as shown

Plots 21 & 46 – handed



Ground floor



First floor

Plot 28 is FE. \*Window to plots 3, 21, 46 & 51 only. Please ask your Sales Consultant for further details. A/C: Airing cupboard. St: Store cupboard. W: Wardrobe. ☒: Roof light/velux window. ----: Dotted lines denote reduced head height.

IMPORTANT NOTICE TO CUSTOMERS: The Consumer Protection from Unfair Trading Regulations 2008. Cala Homes (West) Limited operates a policy of continual product development and the specifications outlined in this brochure are indicative only. The computer generated images and photographs do not necessarily represent the actual finishings/elevation or treatments, landscaping, furnishings and fittings at this development. Information contained is accurate at date of publication on 23.09.24. See the main brochure for the full Consumer Protection statement.



# The Moncrief

5 bedroom detached home



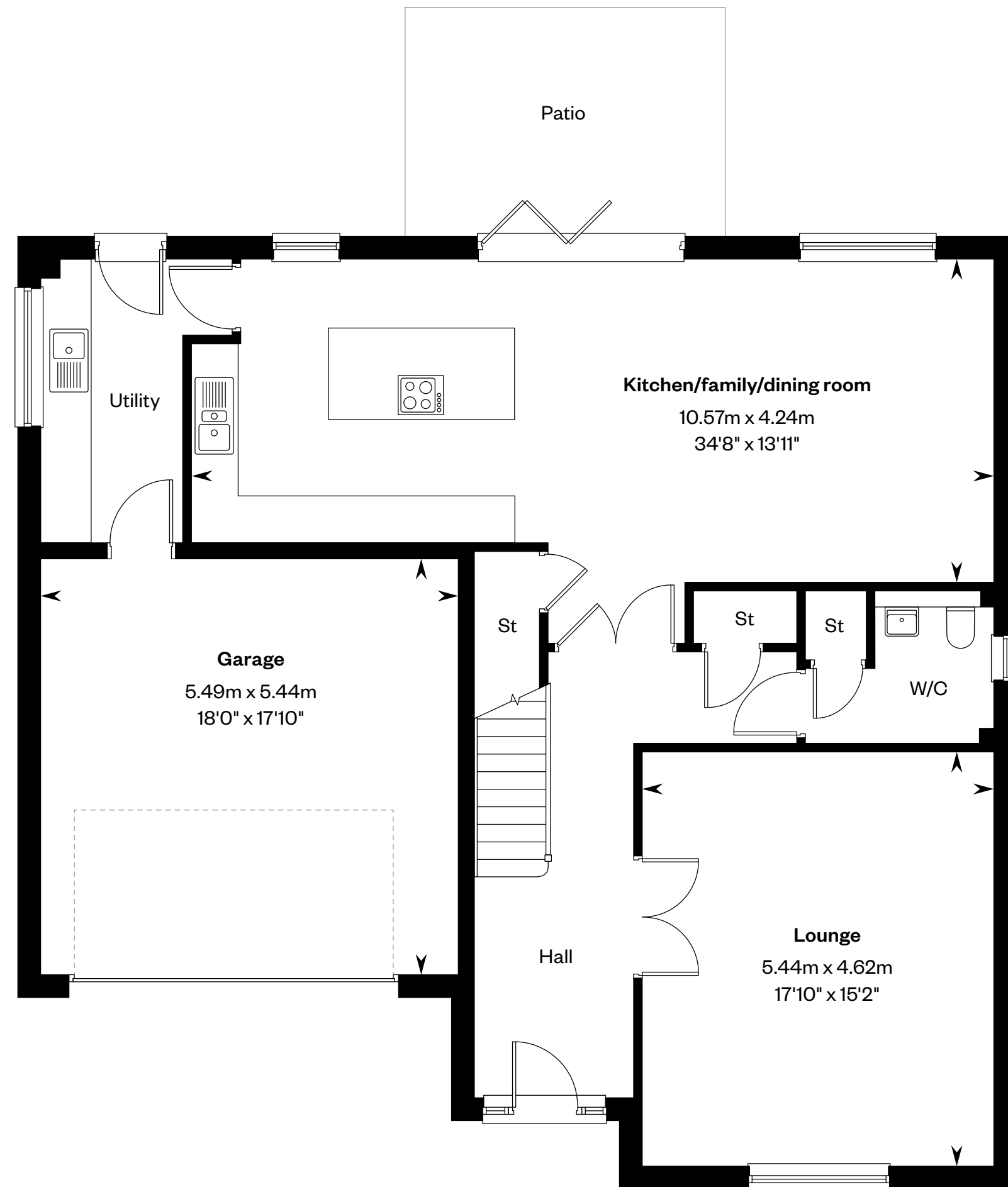
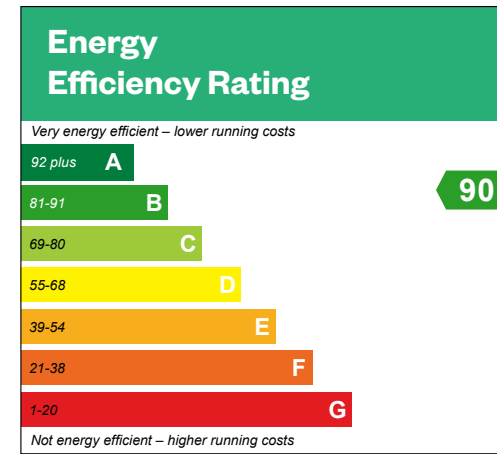


# The Moncrief

5 bedroom detached home

Plots 23, 25 & 44 – as shown

Plots 4, 31, 49, 55 & 68 – handed



Ground floor



First floor

Please ask your Sales Consultant for further details. A/C: Airing cupboard. E/S: En-Suite. St: Store cupboard. W: Wardrobe. ☐: Roof light/velux window.

IMPORTANT NOTICE TO CUSTOMERS: The Consumer Protection from Unfair Trading Regulations 2008. Cala Homes (West) Limited operates a policy of continual product development and the specifications outlined in this brochure are indicative only. The computer generated images and photographs do not necessarily represent the actual finishings/elevation or treatments, landscaping, furnishings and fittings at this development. Information contained is accurate at date of publication on 23.09.24. See the main brochure for the full Consumer Protection statement.



# The Ramsay

5 bedroom detached home



Computer Generated Image - A typical Ramsay

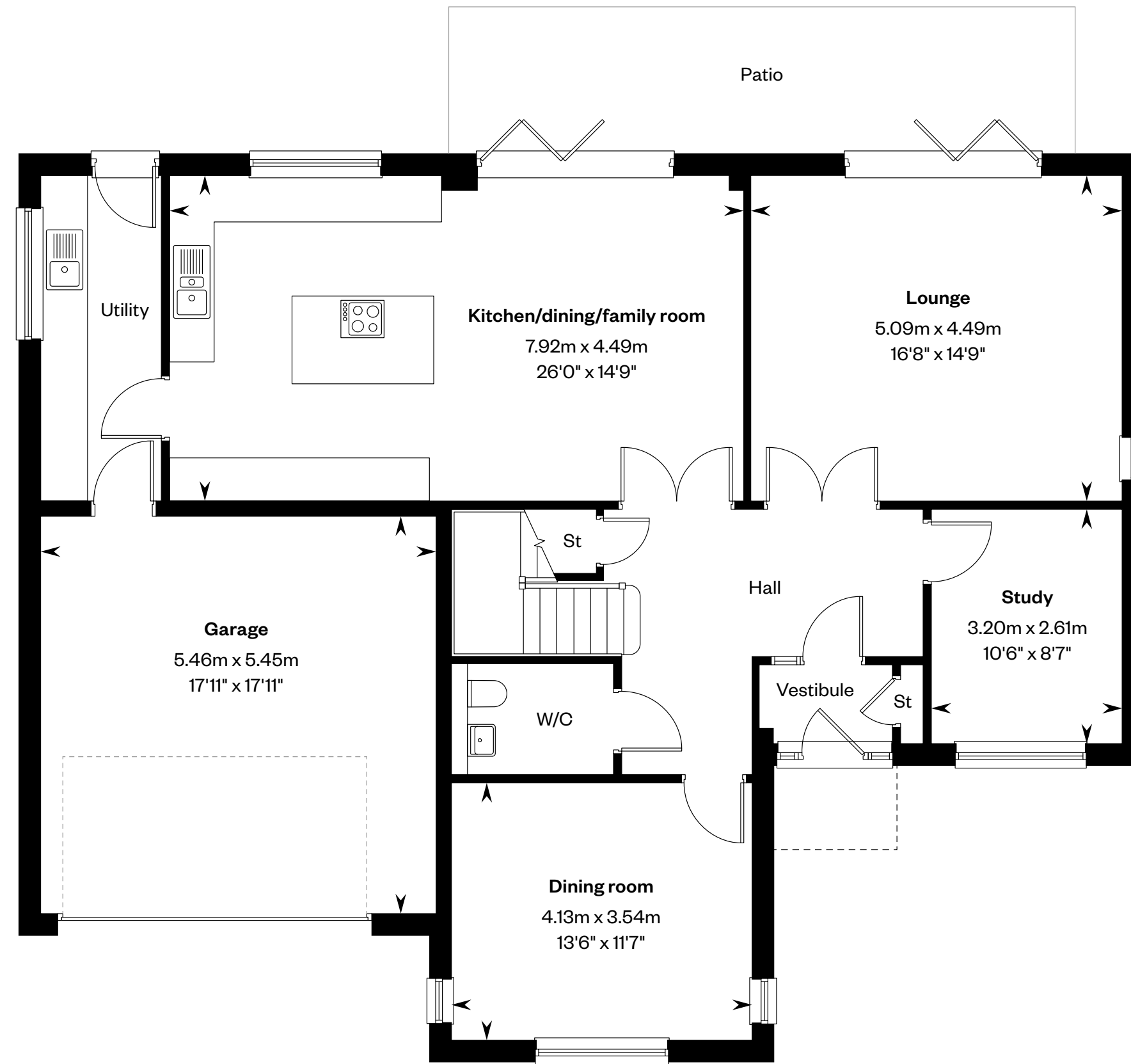
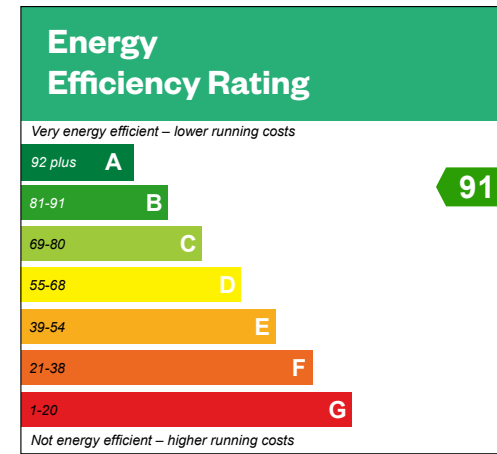


# The Ramsay

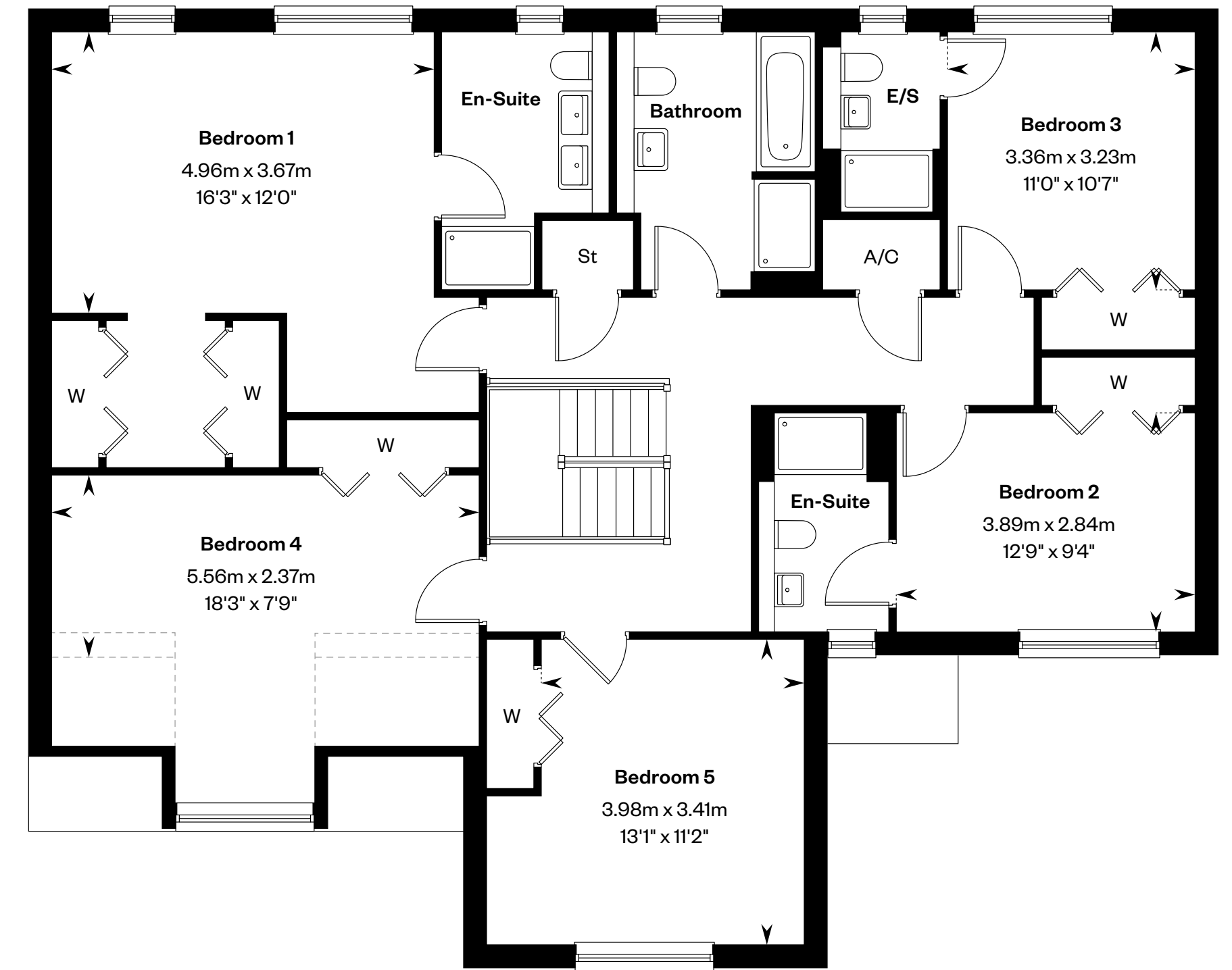
5 bedroom detached home

Plots 29, 33 & 66 – as shown

Plots 42 & 53 – handed



Ground floor



First floor

Please ask your Sales Consultant for further details. A/C: Airing cupboard. E/S: En-Suite. St: Store cupboard. W: Wardrobe. ☒: Roof light/velux window. ----: Dotted lines denote reduced head height.

**IMPORTANT NOTICE TO CUSTOMERS:** The Consumer Protection from Unfair Trading Regulations 2008. Cala Homes (West) Limited operates a policy of continual product development and the specifications outlined in this brochure are indicative only. The computer generated images and photographs do not necessarily represent the actual finishings/elevation or treatments, landscaping, furnishings and fittings at this development. Information contained is accurate at date of publication on 23.09.24. See the main brochure for the full Consumer Protection statement.



# The Ranald

5 bedroom detached home



Computer Generated Image - A typical Ranald

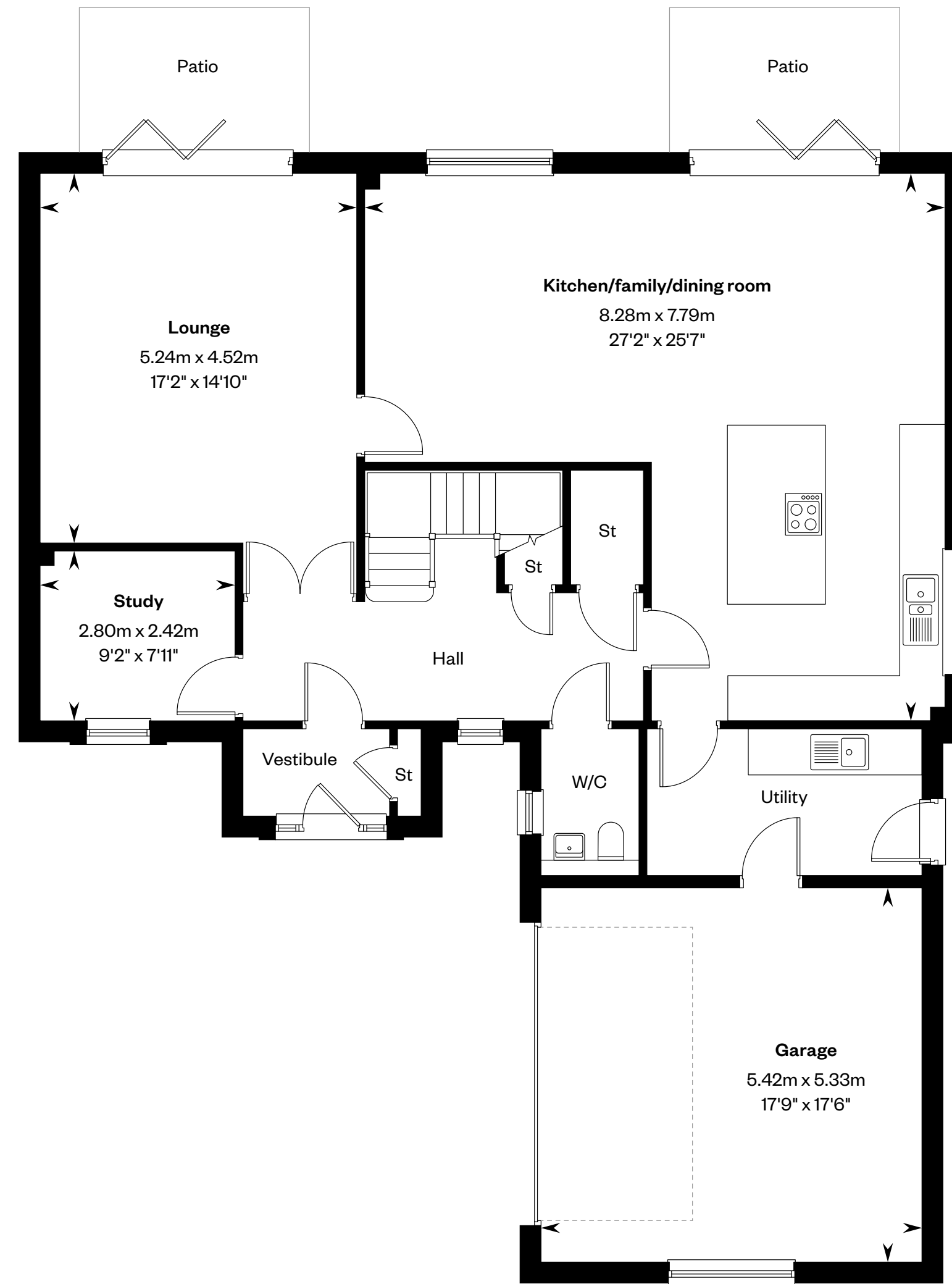
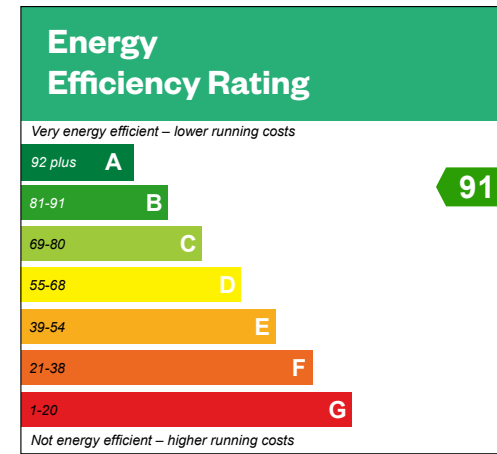


# The Ranald

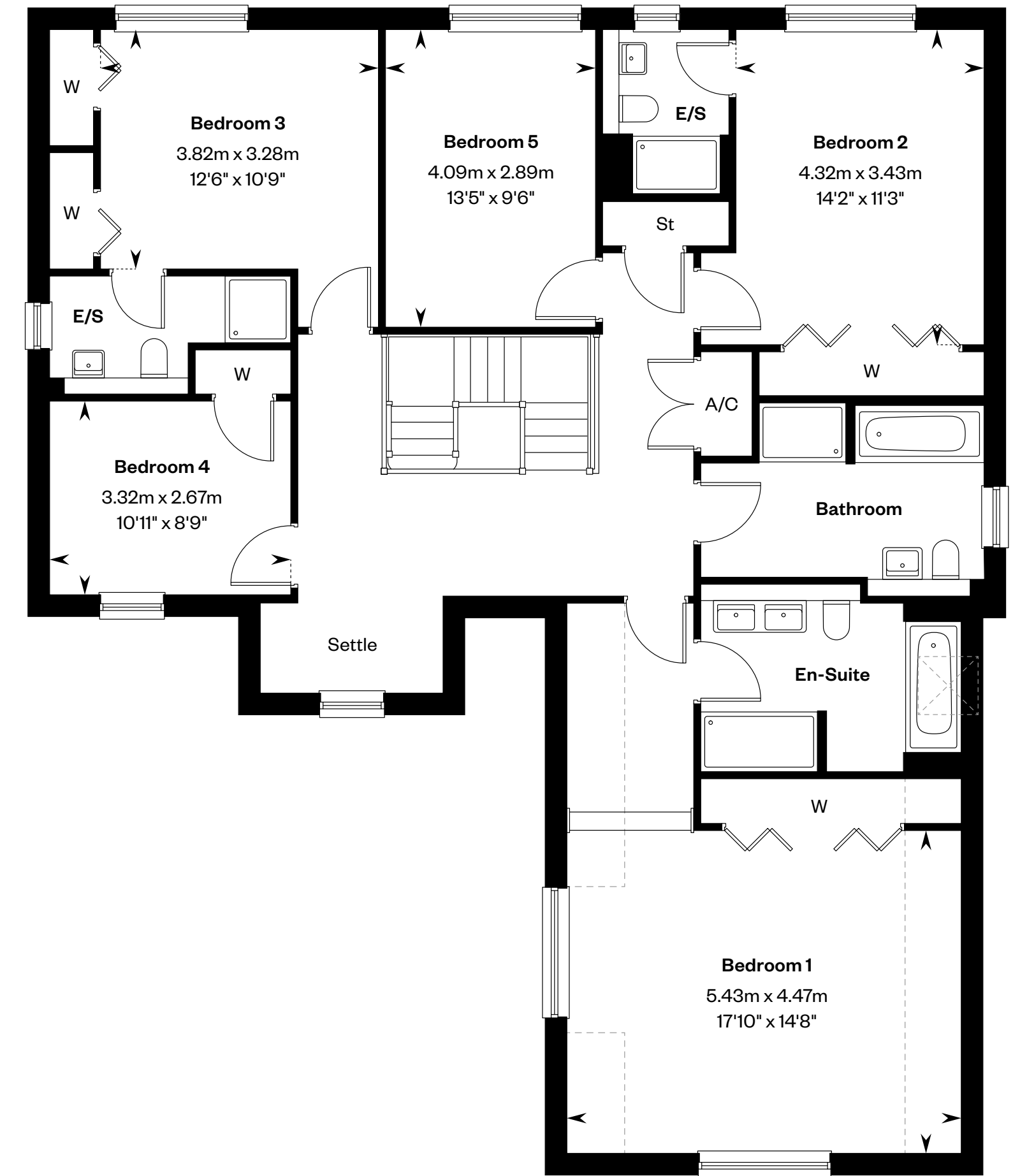
5 bedroom detached home

Plots 30 & 38 – as shown

Plots 37 & 52 – handed



Ground floor



First floor

Please ask your Sales Consultant for further details. A/C: Airing cupboard. E/S: En-Suite. St: Store cupboard. W: Wardrobe. ☒: Roof light/velux window. - - -: Dotted lines denote reduced head height.

IMPORTANT NOTICE TO CUSTOMERS: The Consumer Protection from Unfair Trading Regulations 2008. Cala Homes (West) Limited operates a policy of continual product development and the specifications outlined in this brochure are indicative only. The computer generated images and photographs do not necessarily represent the actual finishings/elevation or treatments, landscaping, furnishings and fittings at this development. Information contained is accurate at date of publication on 23.09.24. See the main brochure for the full Consumer Protection statement.