



The Allan

3 bedroom terraced home



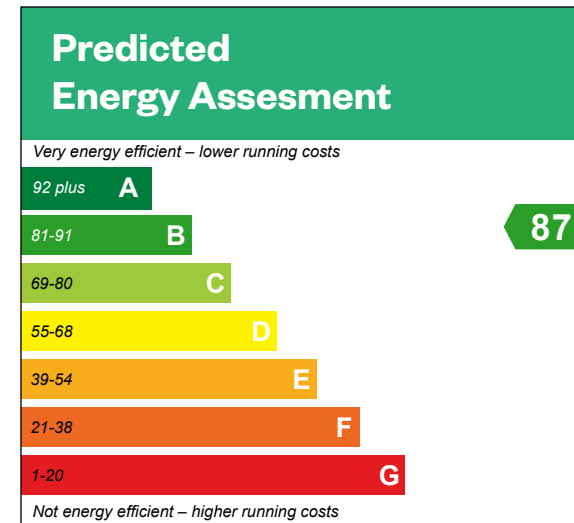
Computer generated image - The Allan

The Allan

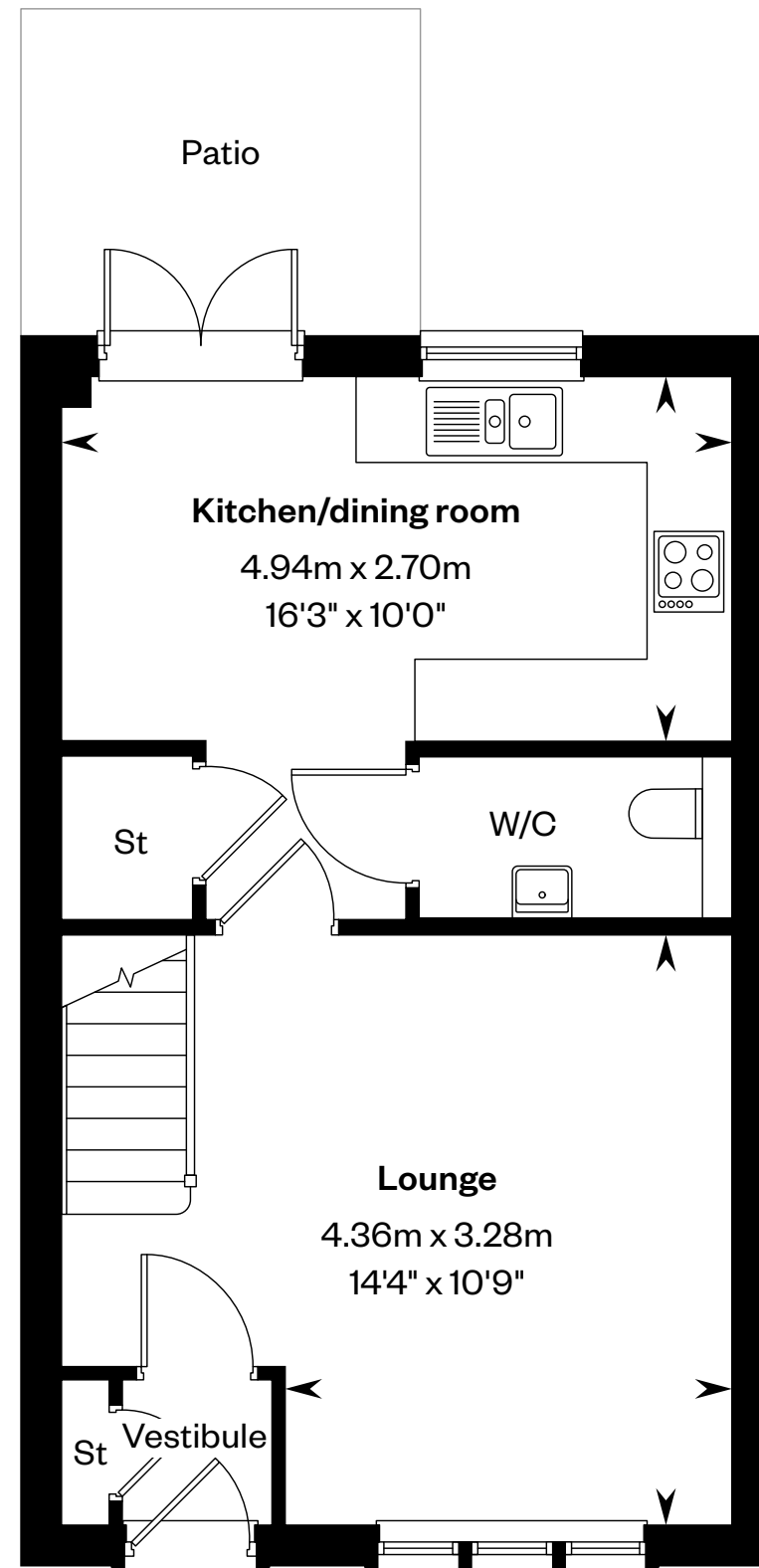
3 bedroom terraced home

Plots 25, 26, 27, 28, 29, 88, 89, 90, 125, 126, 127, 129, 134 & 135 – as shown

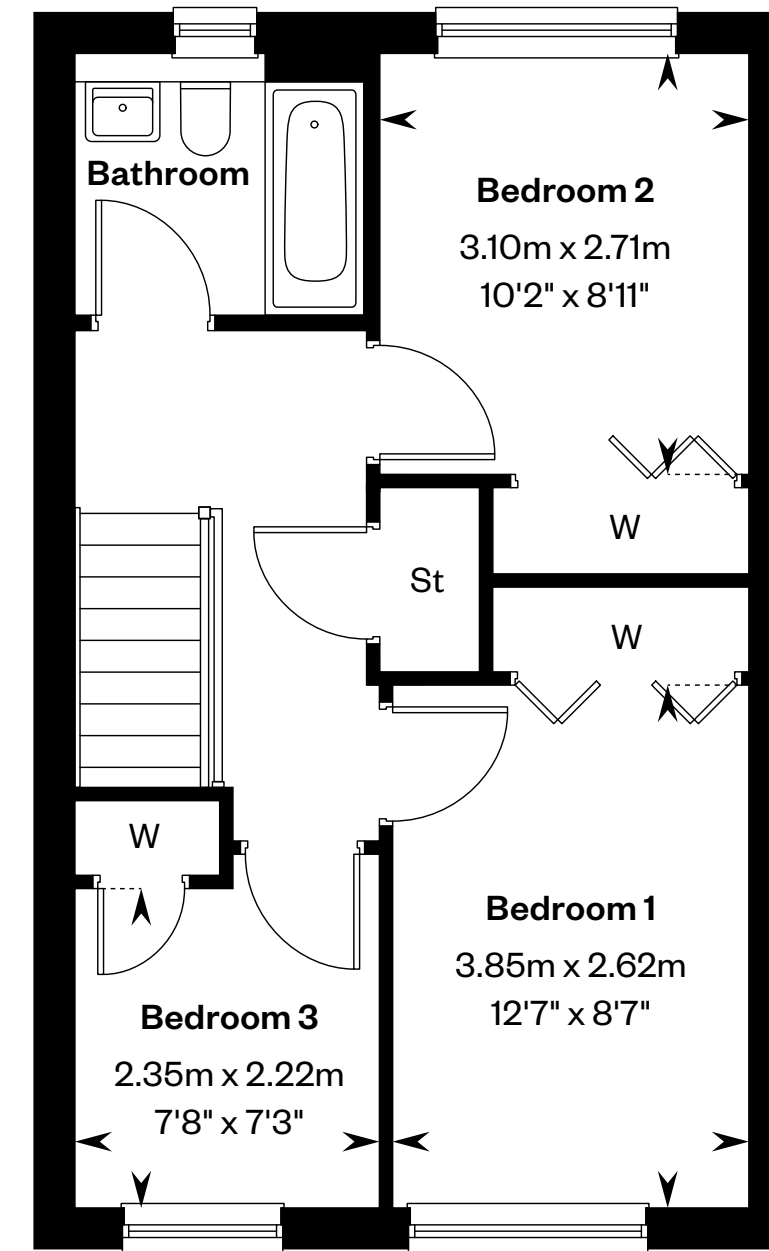
Plots 23, 24, 128, 132, 133 & 136 – handed



This is a Predicted Energy Assessment for properties that are incomplete. Once the property is completed, this rating will be updated and an official Energy Performance certificate will be created for the property.



Ground floor



First floor

Please ask your Sales Consultant for further details. St: Store cupboard. W: Wardrobe.

IMPORTANT NOTICE TO CUSTOMERS: The Consumer Protection from Unfair Trading Regulations 2008. Cala Homes (East) Limited operates a policy of continual product development and the specifications outlined in this brochure are indicative only. The computer generated images and photographs do not necessarily represent the actual finishings/elevation or treatments, landscaping, furnishings and fittings at this development. Information contained is accurate at date of publication on 02.12.24. See the main brochure for the full Consumer Protection statement.



The Arran

3 bedroom terraced home



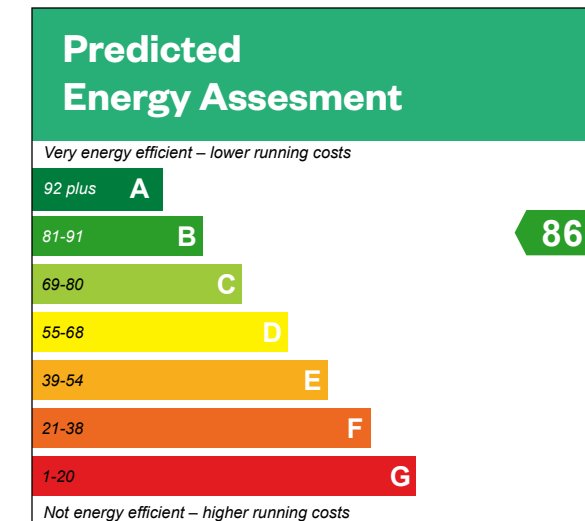
Computer generated image - The Arran

The Arran

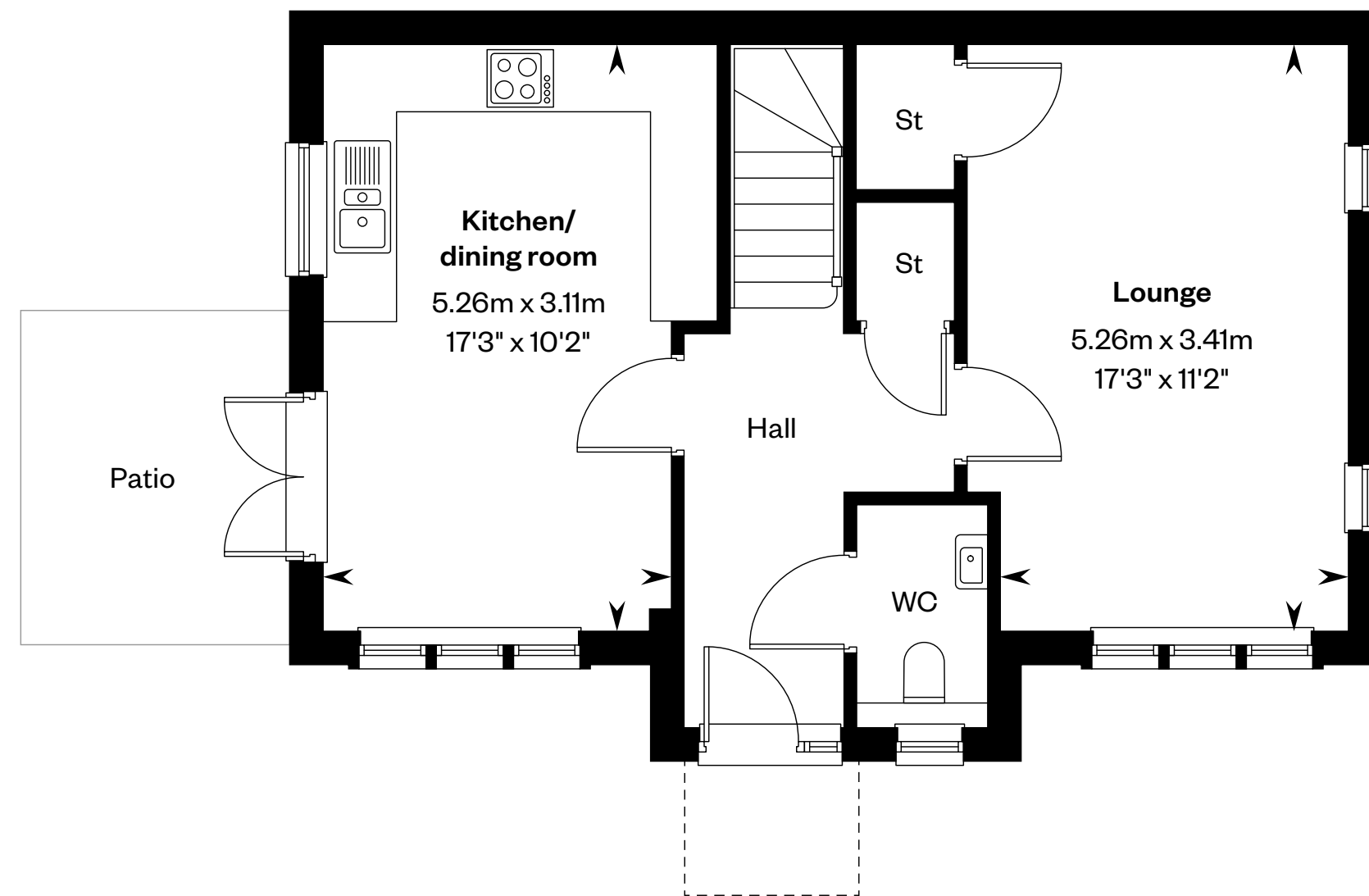
3 bedroom terraced home

Plots 22, 130 & 137 – as shown

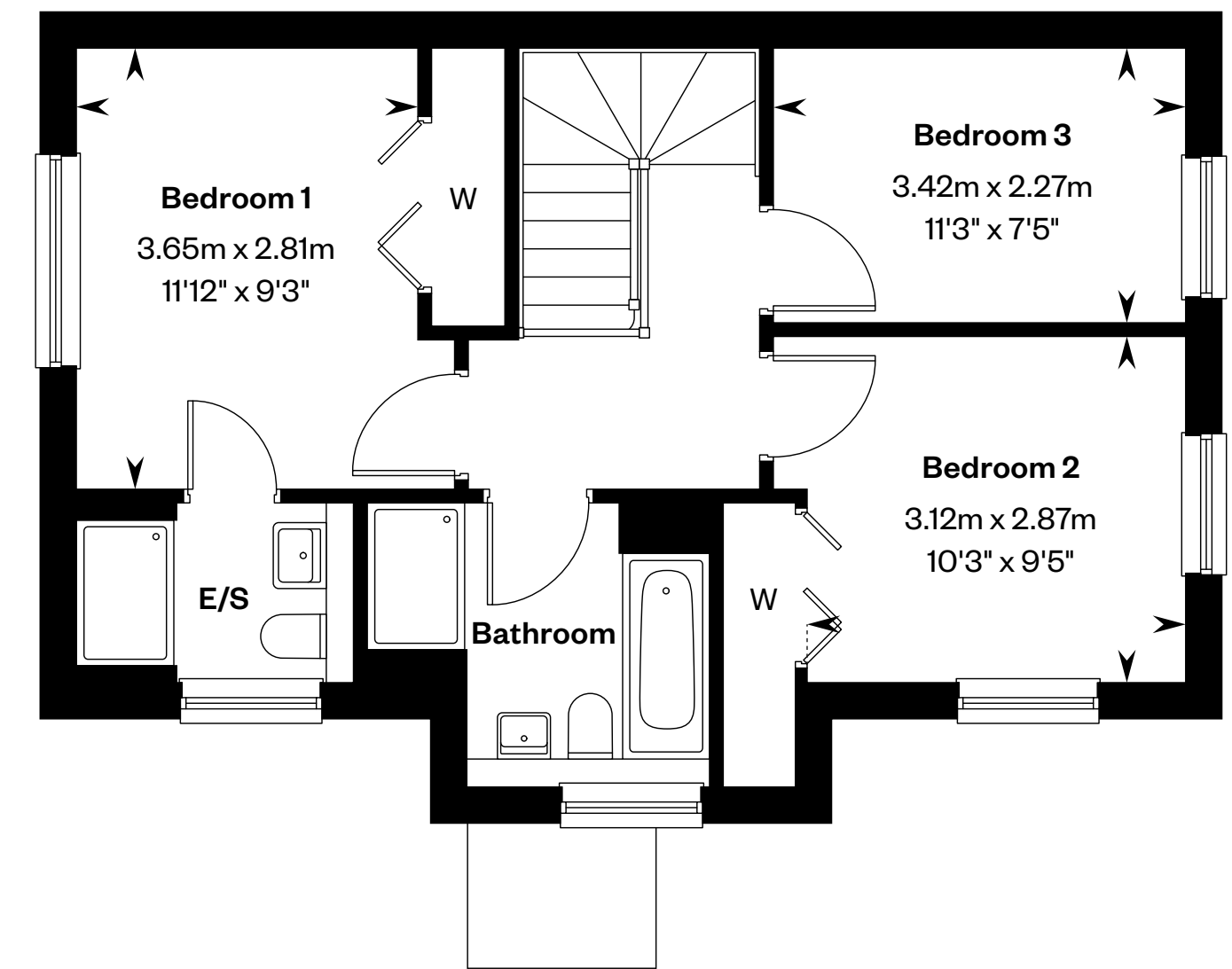
Plots 30, 87, 124 & 131 – handed



This is a Predicted Energy Assessment for properties that are incomplete. Once the property is completed, this rating will be updated and an official Energy Performance certificate will be created for the property.



Ground floor



First floor

Please ask your Sales Consultant for further details. E/S: En-Suite. St: Store cupboard. W: Wardrobe.

IMPORTANT NOTICE TO CUSTOMERS: The Consumer Protection from Unfair Trading Regulations 2008. Cala Homes (East) Limited operates a policy of continual product development and the specifications outlined in this brochure are indicative only. The computer generated images and photographs do not necessarily represent the actual finishings/elevation or treatments, landscaping, furnishings and fittings at this development. Information contained is accurate at date of publication on 02.12.24. See the main brochure for the full Consumer Protection statement.



The Balmaha

4 bedroom detached home



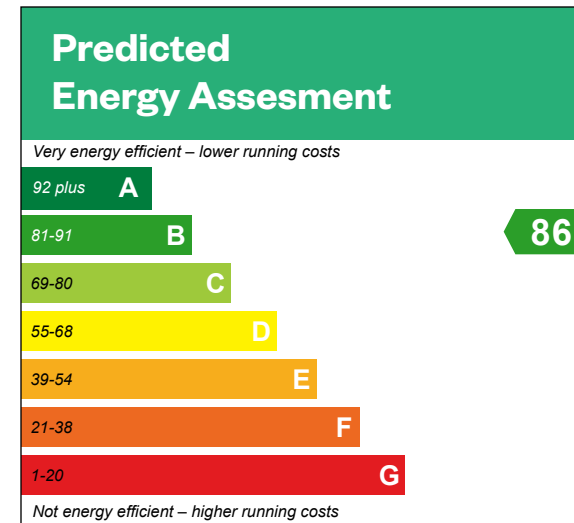
Computer generated image - The BALMAHA

The Balmaha

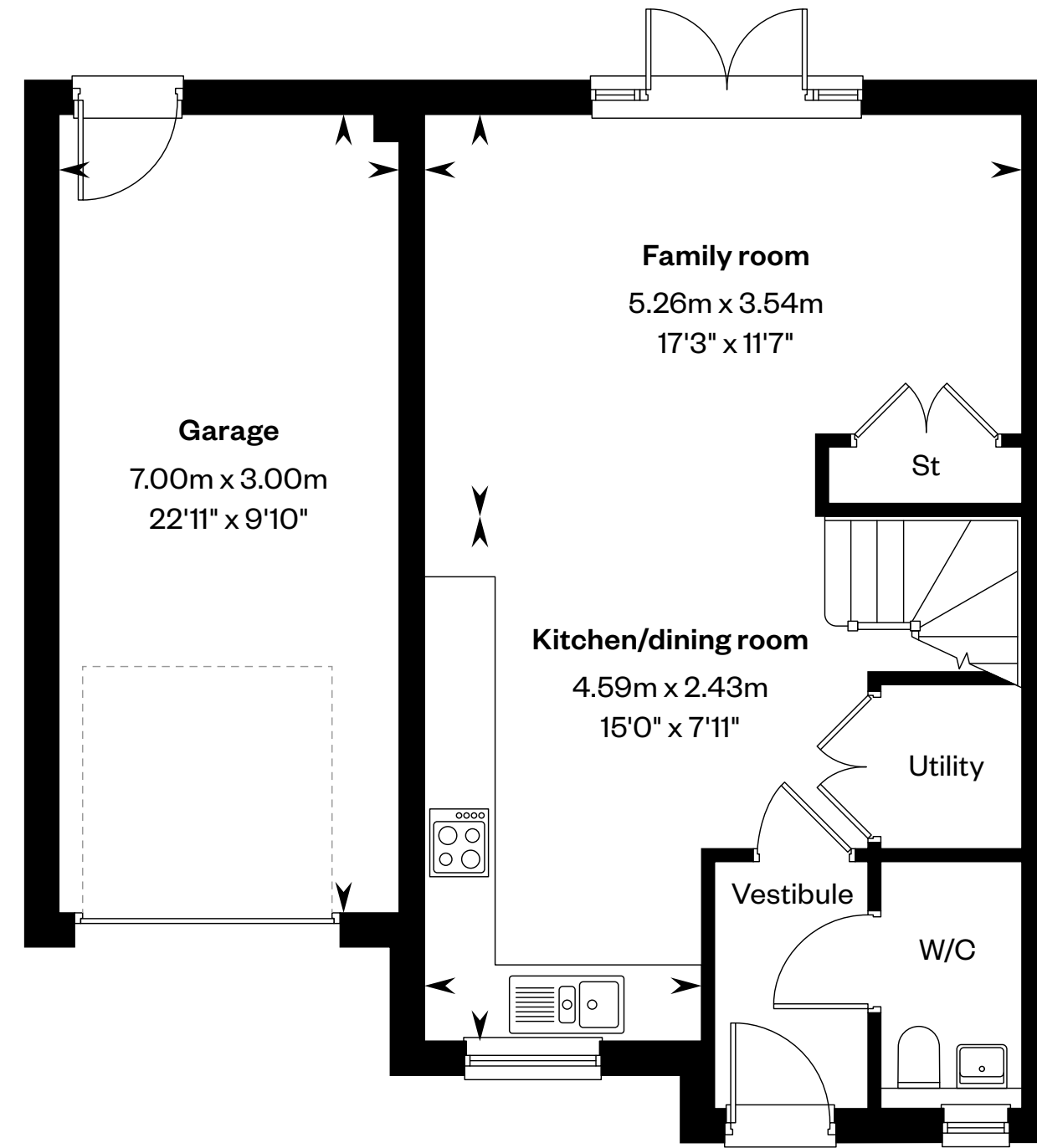
4 bedroom detached home

Plots 91, 140 & 143 – as shown

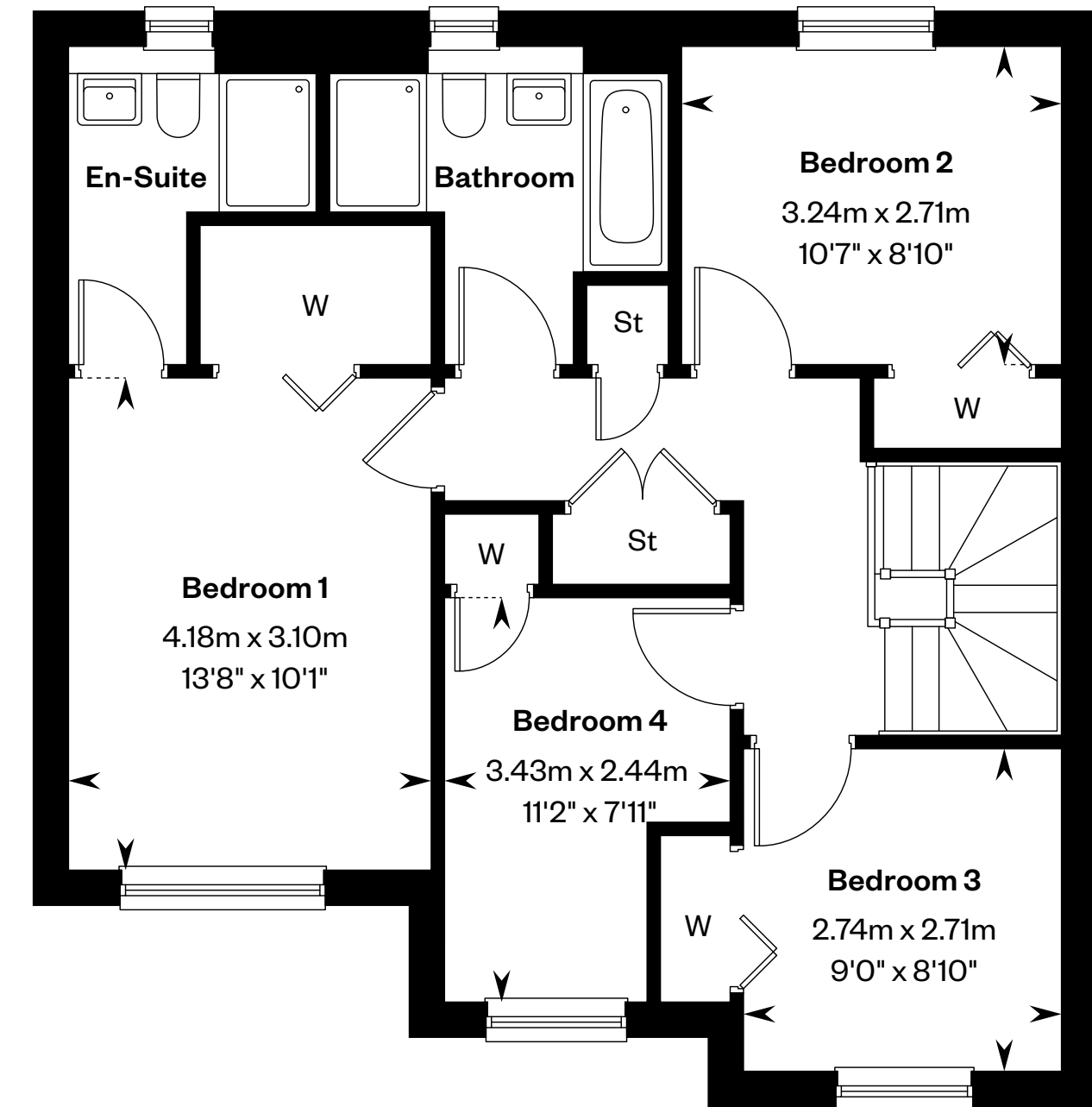
Plots 138, 139 & 141 – handed



This is a Predicted Energy Assessment for properties that are incomplete. Once the property is completed, this rating will be updated and an official Energy Performance certificate will be created for the property.



Ground floor



First floor

Please ask your Sales Consultant for further details. St: Store cupboard. W: Wardrobe.

IMPORTANT NOTICE TO CUSTOMERS: The Consumer Protection from Unfair Trading Regulations 2008. Cala Homes (East) Limited operates a policy of continual product development and the specifications outlined in this brochure are indicative only. The computer generated images and photographs do not necessarily represent the actual finishings/elevation or treatments, landscaping, furnishings and fittings at this development. Information contained is accurate at date of publication on 02.12.24. See the main brochure for the full Consumer Protection statement.



The Bruar

4 bedroom detached home

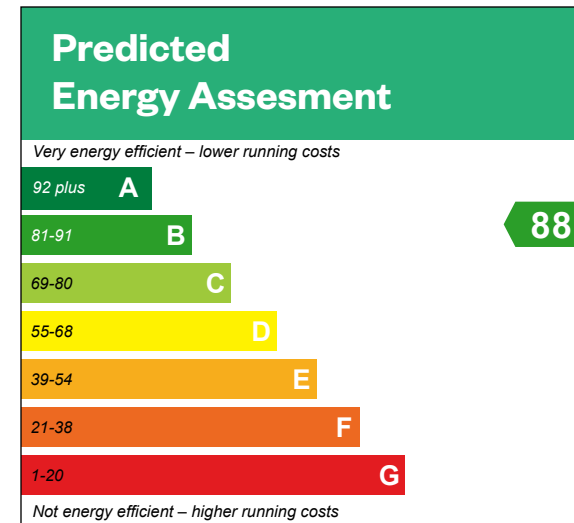


Computer generated image - The Bruar

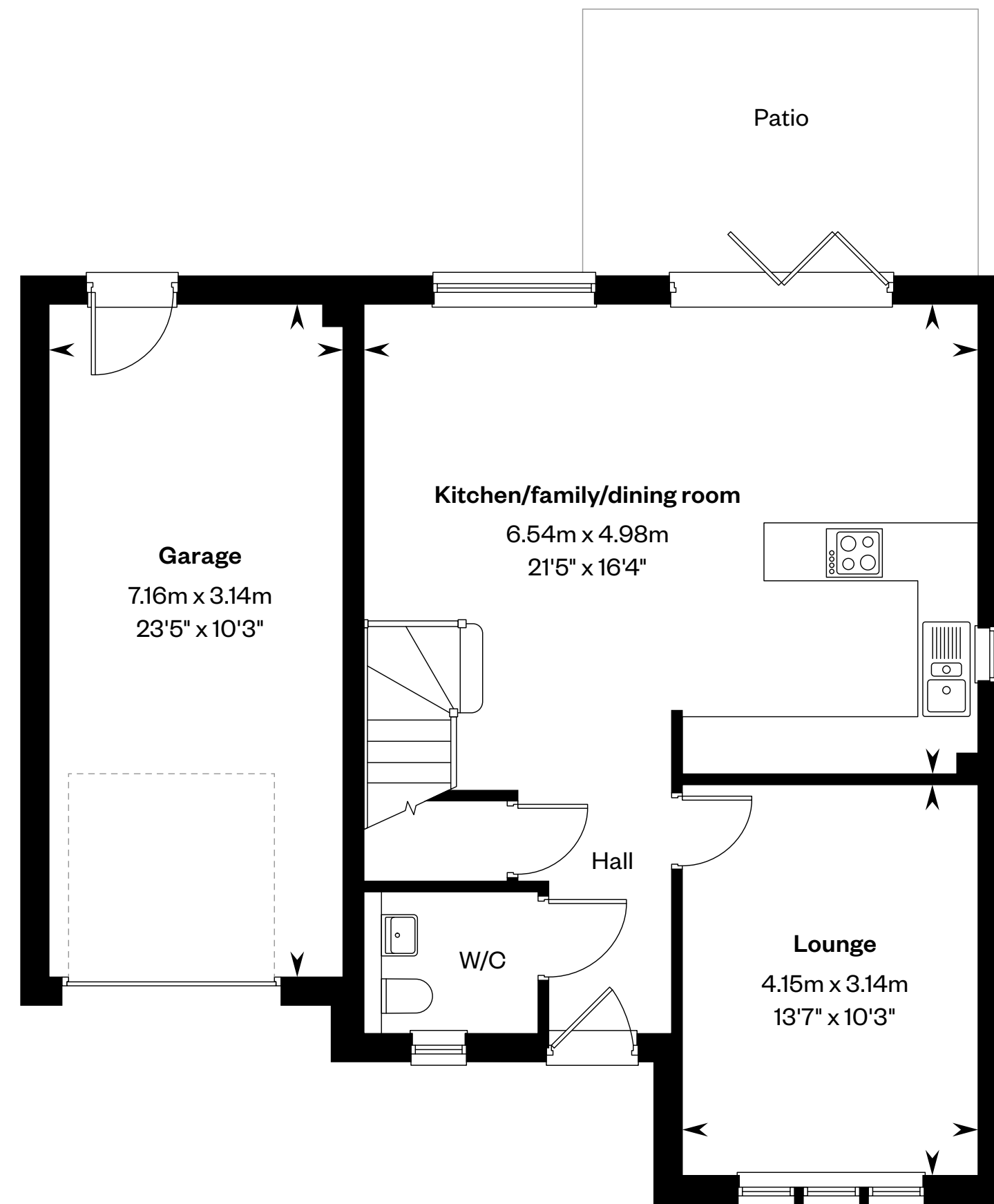
The Bruar

4 bedroom detached home

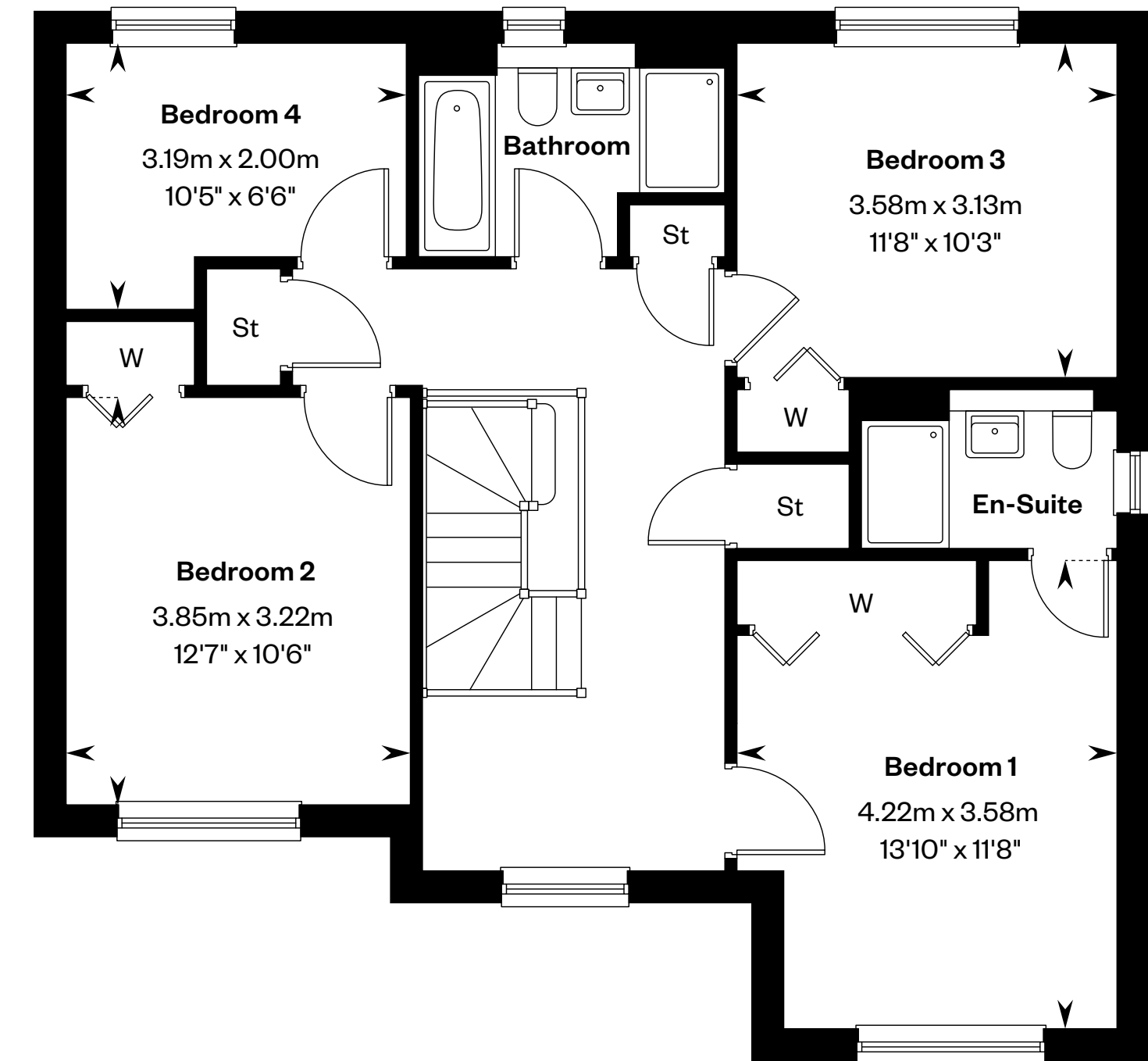
Plots 98, 99 & 144 – as shown



This is a Predicted Energy Assessment for properties that are incomplete. Once the property is completed, this rating will be updated and an official Energy Performance certificate will be created for the property.



Ground floor



First floor

Please ask your Sales Consultant for further details. St: Store cupboard. W: Wardrobe.

IMPORTANT NOTICE TO CUSTOMERS: The Consumer Protection from Unfair Trading Regulations 2008. Cala Homes (East) Limited operates a policy of continual product development and the specifications outlined in this brochure are indicative only. The computer generated images and photographs do not necessarily represent the actual finishings/elevation or treatments, landscaping, furnishings and fittings at this development. Information contained is accurate at date of publication on 02.12.24. See the main brochure for the full Consumer Protection statement.



The Bryce

4 bedroom detached home



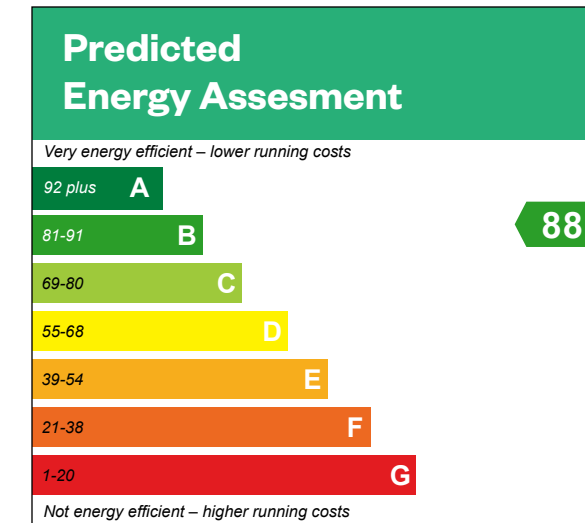
Computer generated image - The Bryce

The Bryce

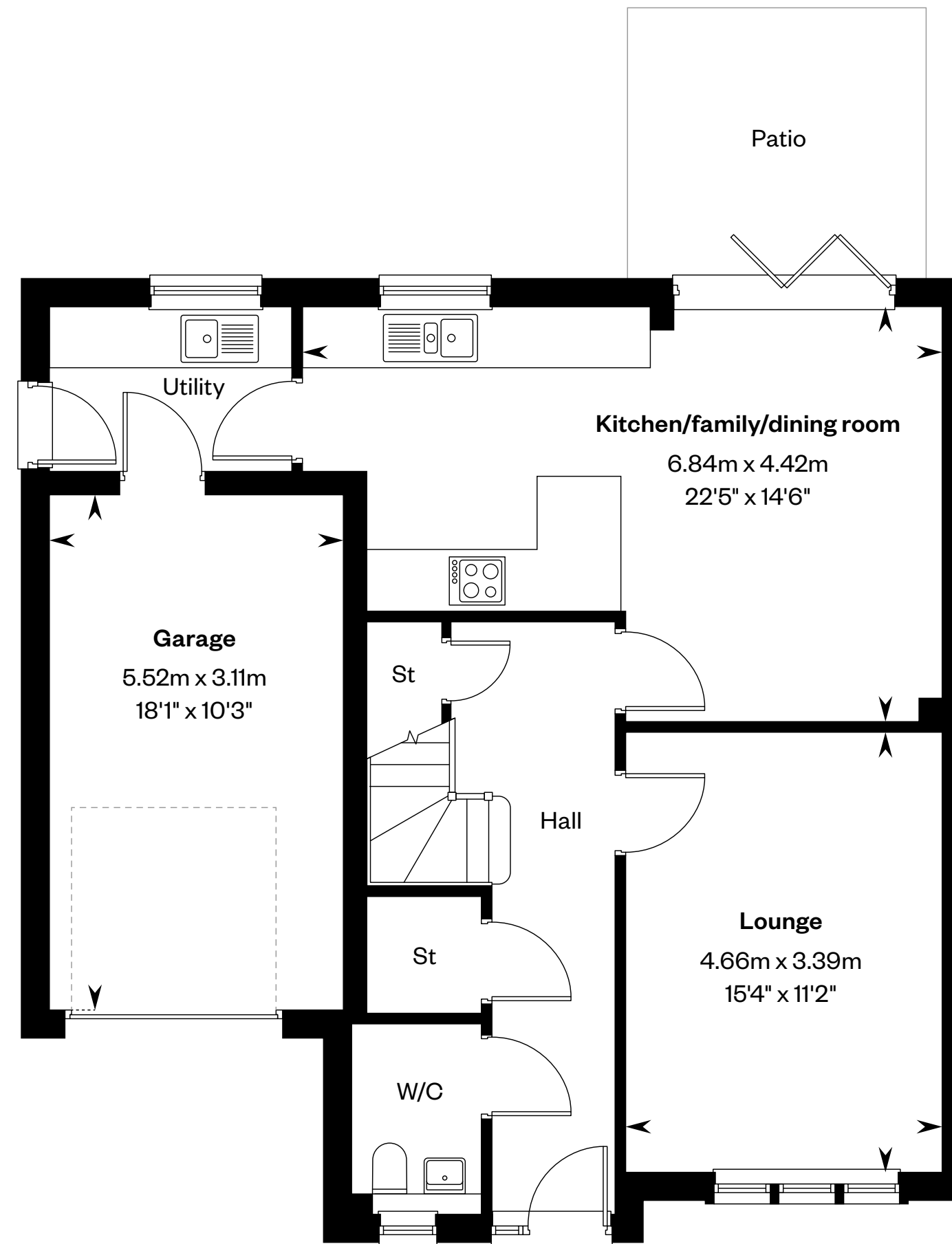
4 bedroom detached home

Plots 17 & 100 – as shown

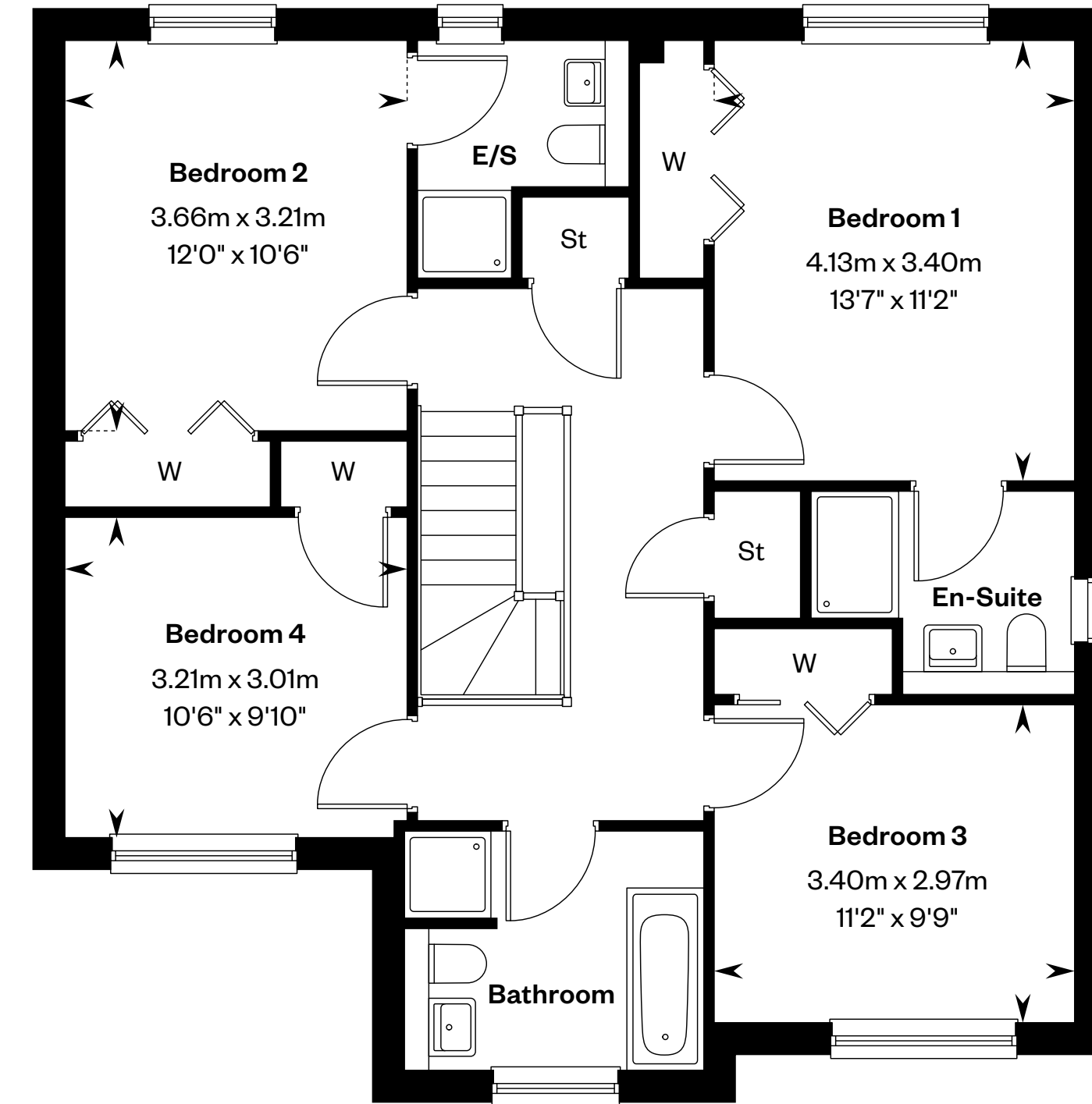
Plots 101 & 142 – handed



This is a Predicted Energy Assessment for properties that are incomplete. Once the property is completed, this rating will be updated and an official Energy Performance certificate will be created for the property.



Ground floor



First floor

Please ask your Sales Consultant for further details. E/S: En-Suite. St: Store cupboard. W: Wardrobe.

IMPORTANT NOTICE TO CUSTOMERS: The Consumer Protection from Unfair Trading Regulations 2008. Cala Homes (East) Limited operates a policy of continual product development and the specifications outlined in this brochure are indicative only. The computer generated images and photographs do not necessarily represent the actual finishings/elevation or treatments, landscaping, furnishings and fittings at this development. Information contained is accurate at date of publication on 02.12.24. See the main brochure for the full Consumer Protection statement.



The Buchanan

4 bedroom townhouse

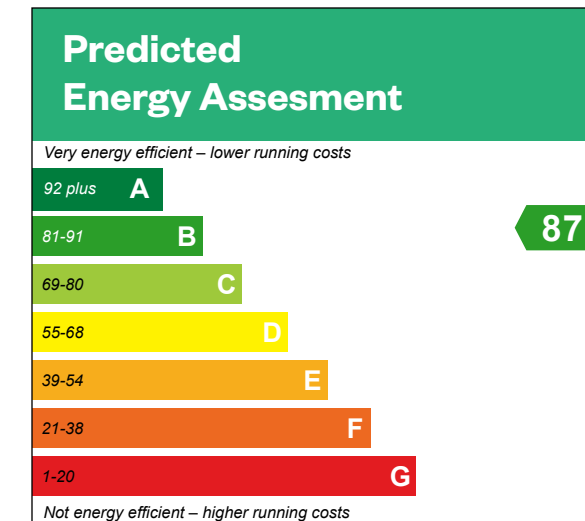


The Buchanan

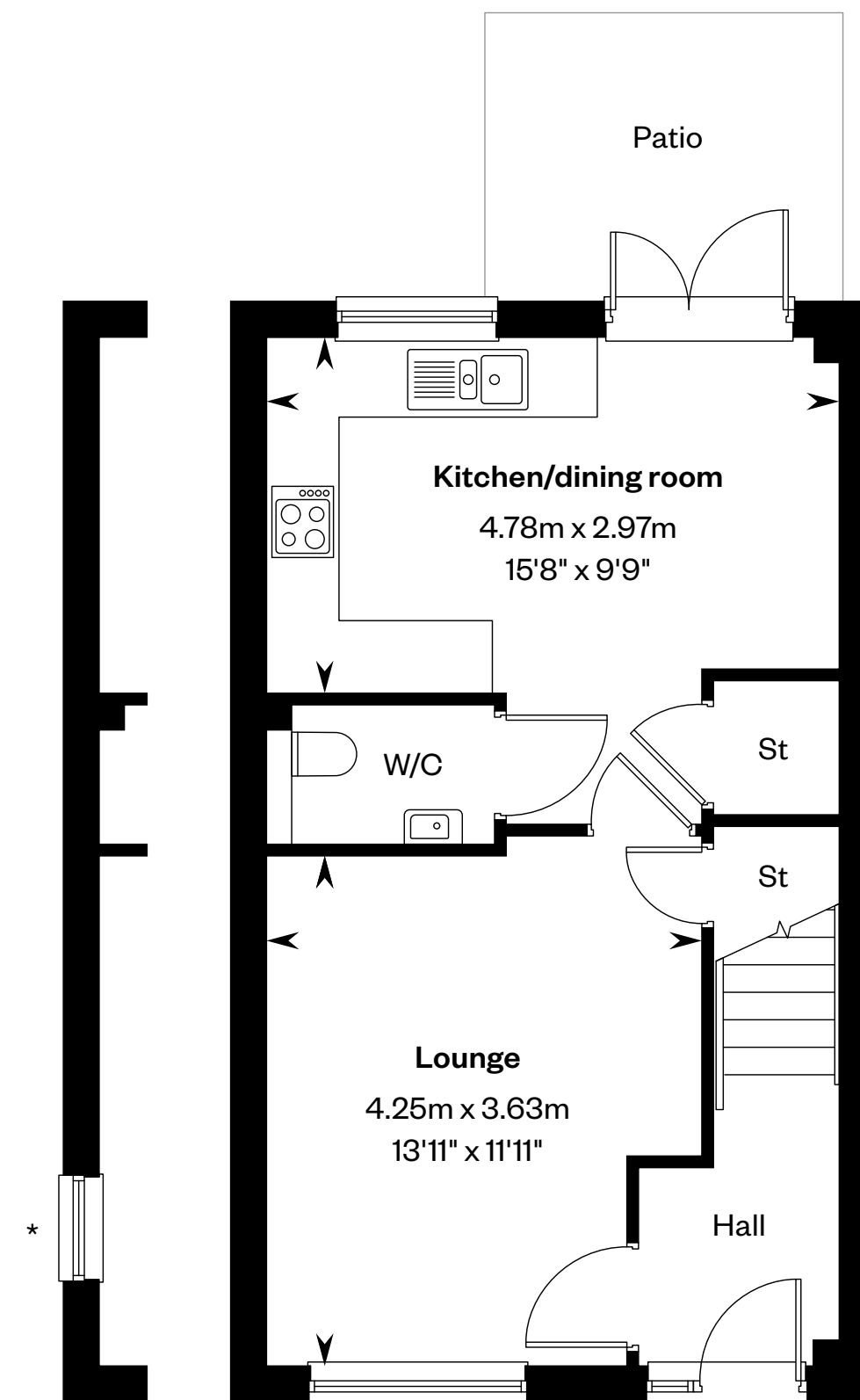
4 bedroom townhouse

Plots 32, 33, 34, 35, 36, 37, 38, 40, 41, 42, 44, 45,
46, 48, 49, 50, 51, 53, 54 & 55 – as shown

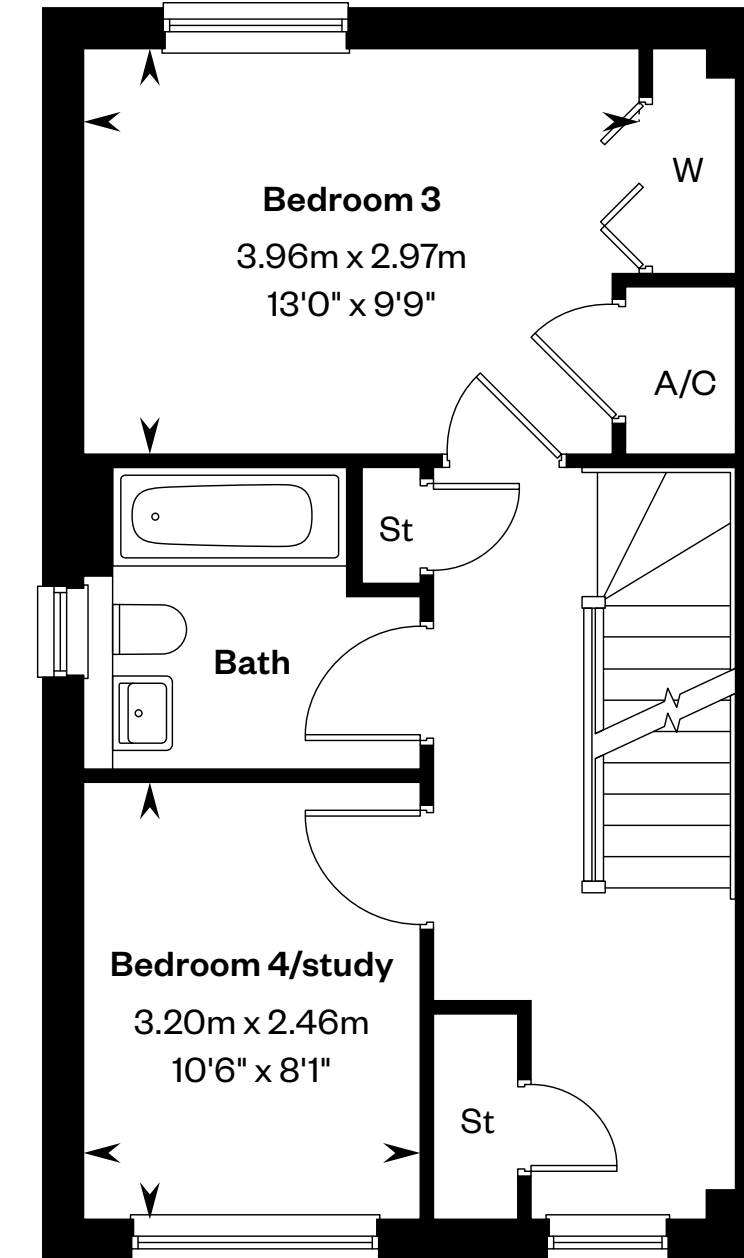
Plots 31, 39, 43, 47, 52 & 56 – handed



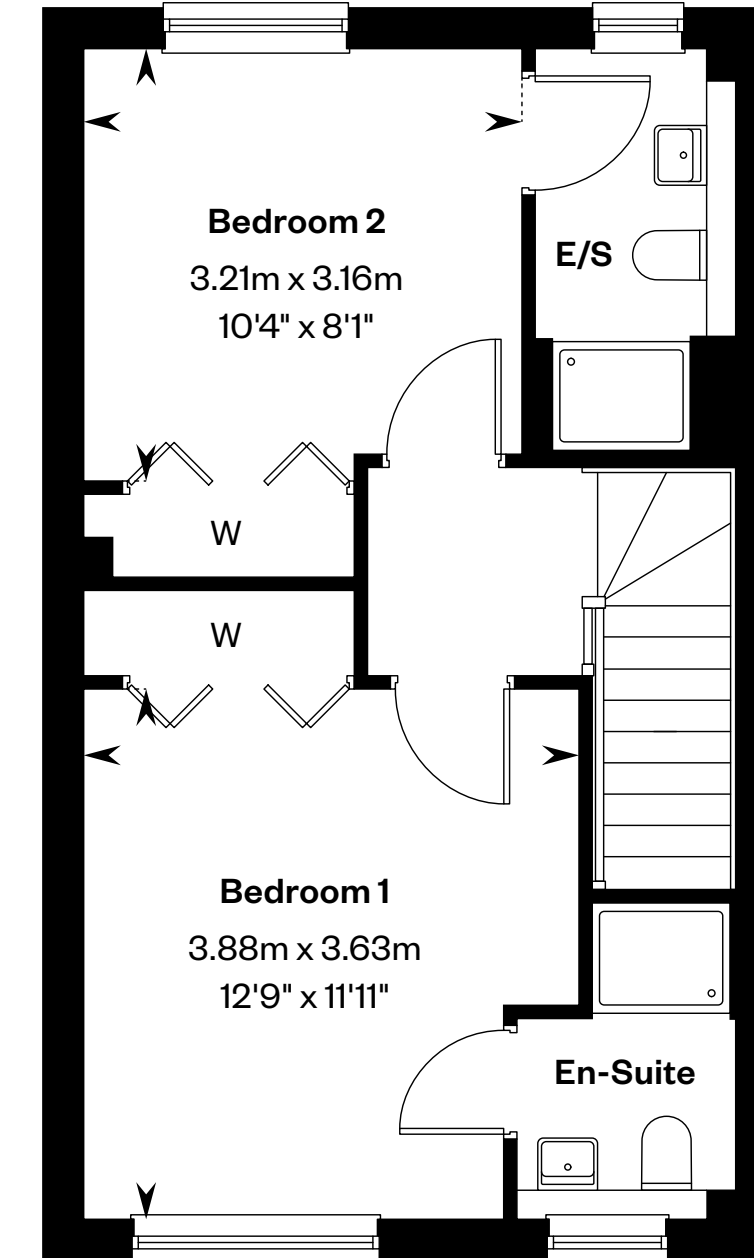
This is a Predicted Energy Assessment for properties that are incomplete. Once the property is completed, this rating will be updated and an official Energy Performance certificate will be created for the property.



Ground floor



First floor



Second floor

*Window to plots 31 and 40 only. Please ask your Sales Consultant for further details. A/C: Airing cupboard. E/S: En-Suite. St: Store cupboard. W: Wardrobe.

IMPORTANT NOTICE TO CUSTOMERS: The Consumer Protection from Unfair Trading Regulations 2008. Cala Homes (East) Limited operates a policy of continual product development and the specifications outlined in this brochure are indicative only. The computer generated images and photographs do not necessarily represent the actual finishings/elevation or treatments, landscaping, furnishings and fittings at this development. Information contained is accurate at date of publication on 02.12.24. See the main brochure for the full Consumer Protection statement.



The Cairn

4 bedroom detached home



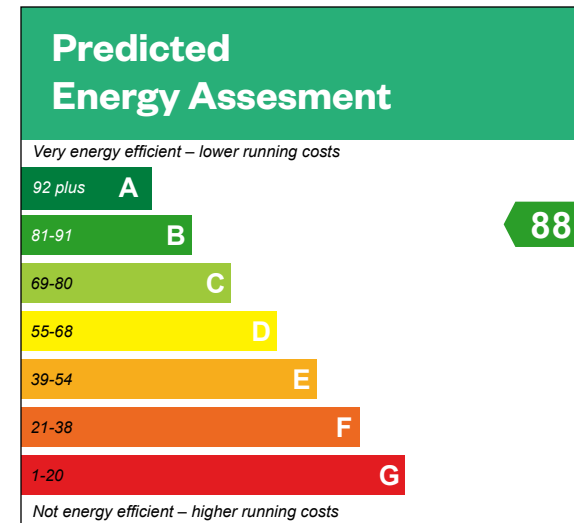
Computer generated image - The Cairn

The Cairn

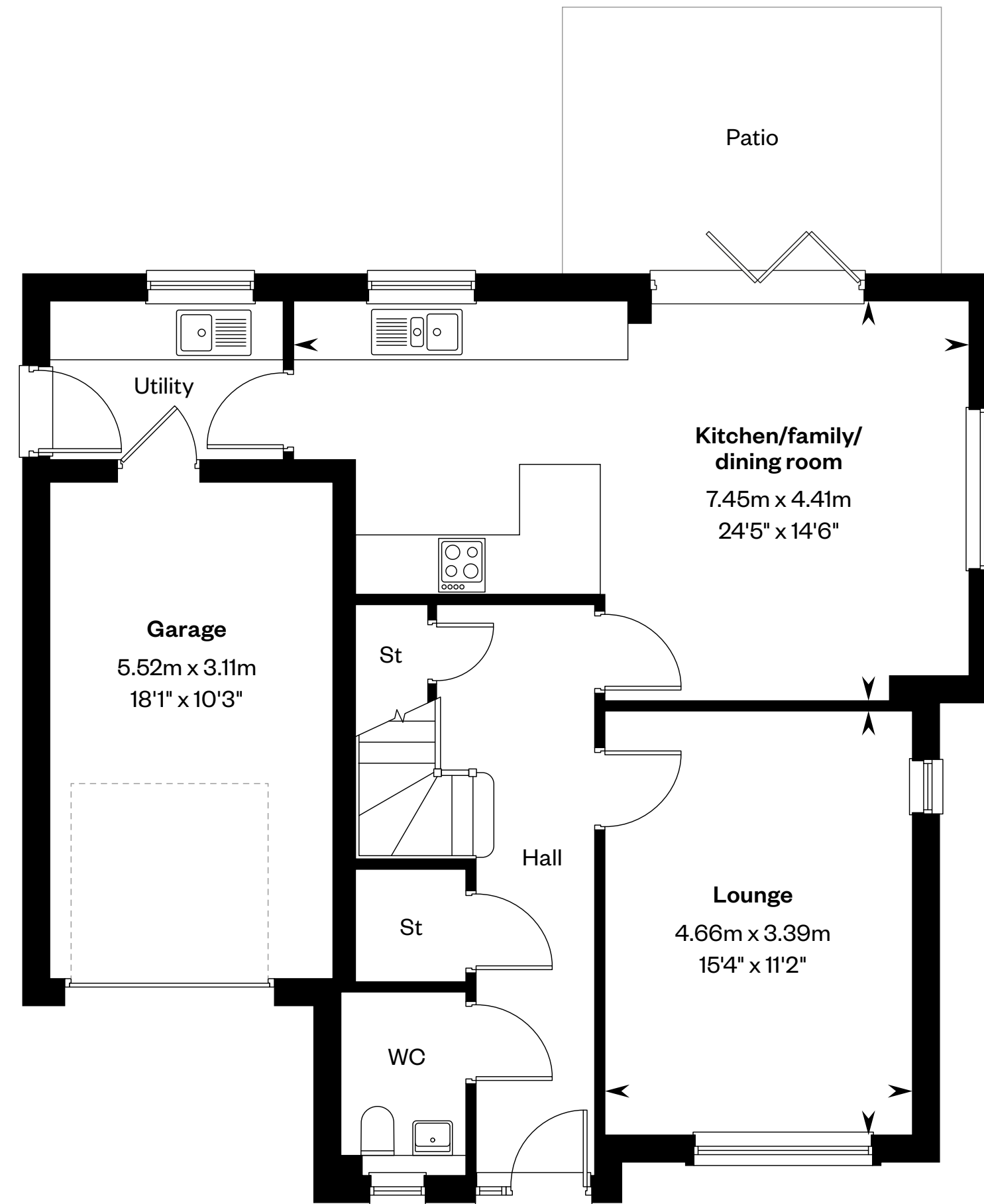
4 bedroom detached home

Plots 108 & 117 – as shown

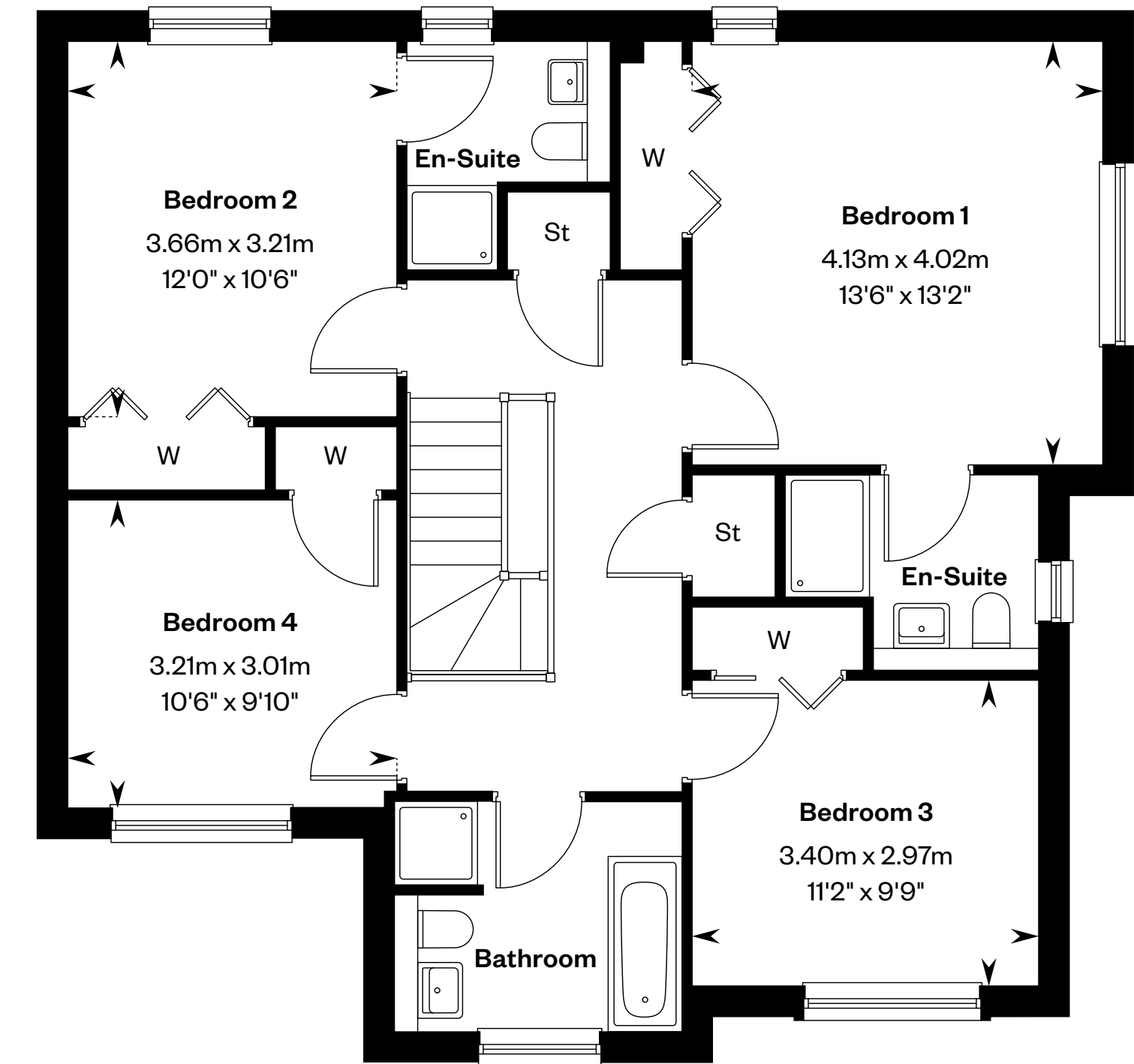
Plot 103 – handed



This is a Predicted Energy Assessment for properties that are incomplete. Once the property is completed, this rating will be updated and an official Energy Performance certificate will be created for the property.



Ground floor



First floor

Please ask your Sales Consultant for further details. St: Store cupboard. W: Wardrobe.

IMPORTANT NOTICE TO CUSTOMERS: The Consumer Protection from Unfair Trading Regulations 2008. Cala Homes (East) Limited operates a policy of continual product development and the specifications outlined in this brochure are indicative only. The computer generated images and photographs do not necessarily represent the actual finishings/elevation or treatments, landscaping, furnishings and fittings at this development. Information contained is accurate at date of publication on 02.12.24. See the main brochure for the full Consumer Protection statement.



The Cleland

4 bedroom detached home



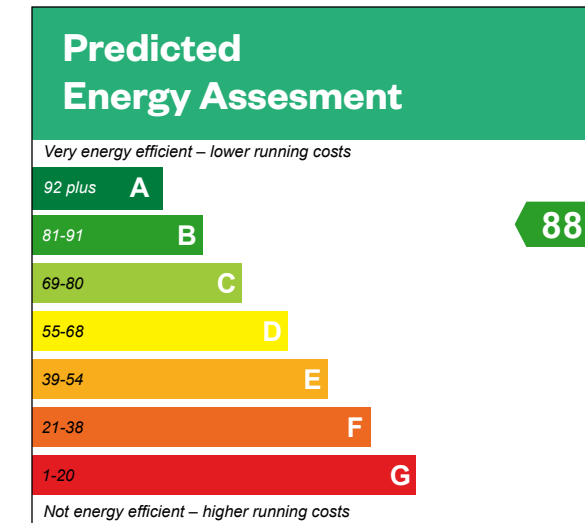
Computer generated image - The Cleland

The Cleland

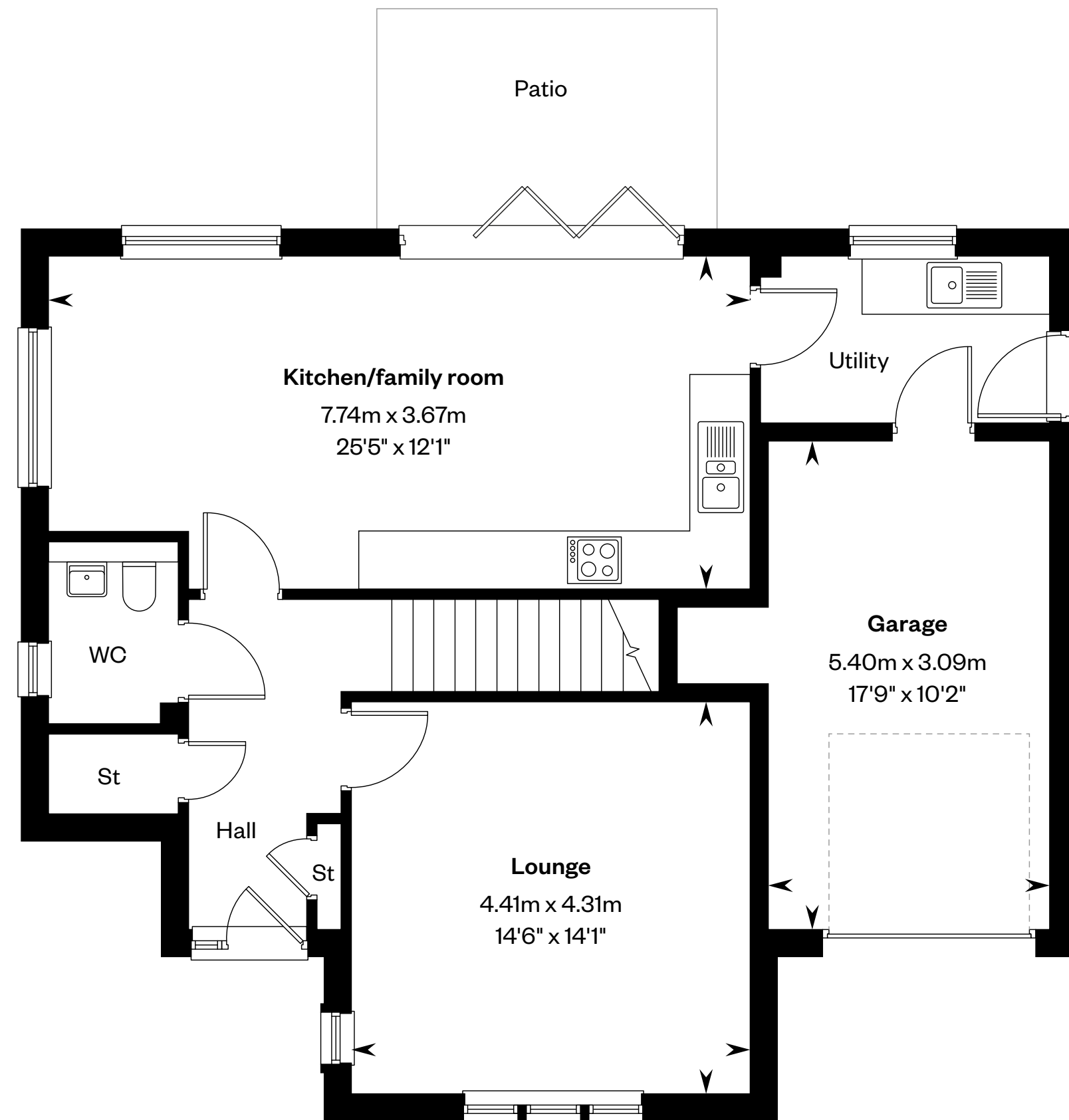
4 bedroom detached home

Plots 16, 96, 102 & 109 – as shown

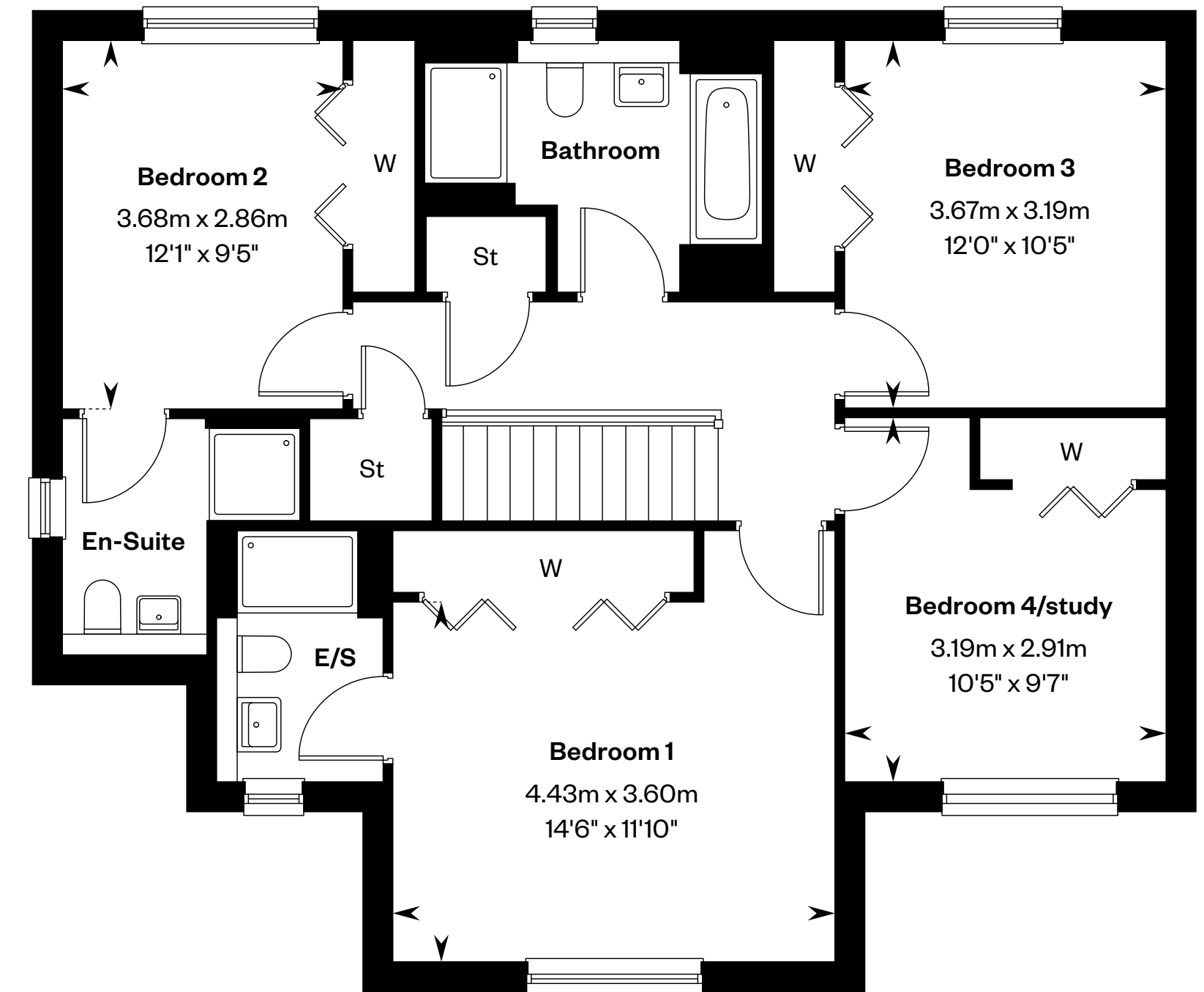
Plot 21, 97 & 106 – handed



This is a Predicted Energy Assessment for properties that are incomplete. Once the property is completed, this rating will be updated and an official Energy Performance certificate will be created for the property.



Ground floor



First floor

Please ask your Sales Consultant for further details. E/S: En-Suite. St: Store cupboard. W: Wardrobe.

IMPORTANT NOTICE TO CUSTOMERS: The Consumer Protection from Unfair Trading Regulations 2008. Cala Homes (East) Limited operates a policy of continual product development and the specifications outlined in this brochure are indicative only. The computer generated images and photographs do not necessarily represent the actual finishings/elevation or treatments, landscaping, furnishings and fittings at this development. Information contained is accurate at date of publication on 02.12.24. See the main brochure for the full Consumer Protection statement.



The Colville

4 bedroom detached home with study



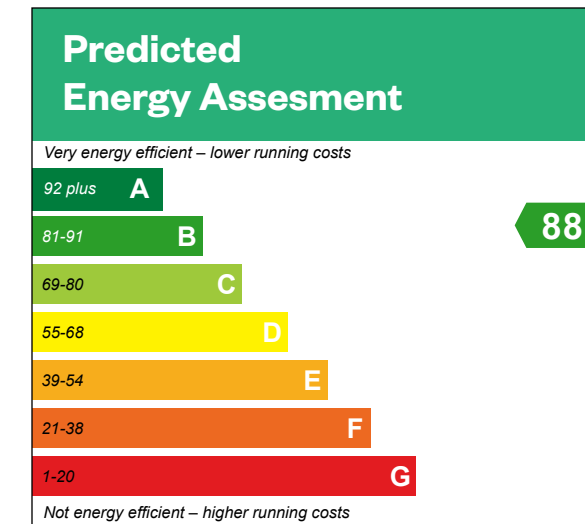
Computer generated image - The Colville

The Colville

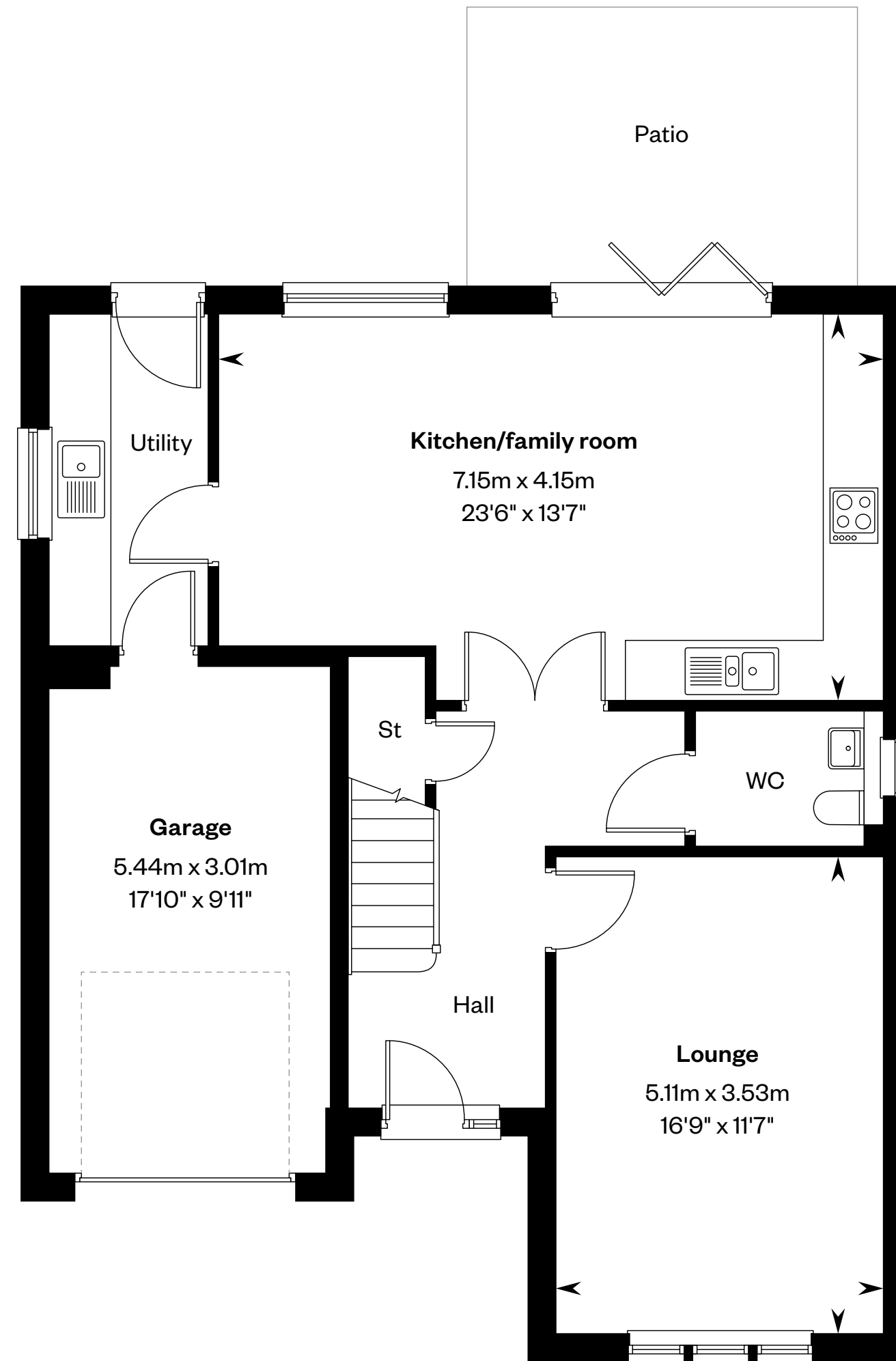
4 bedroom detached home with study

Plots 6, 93, 95, 110, 112, 114 & 116 – as shown

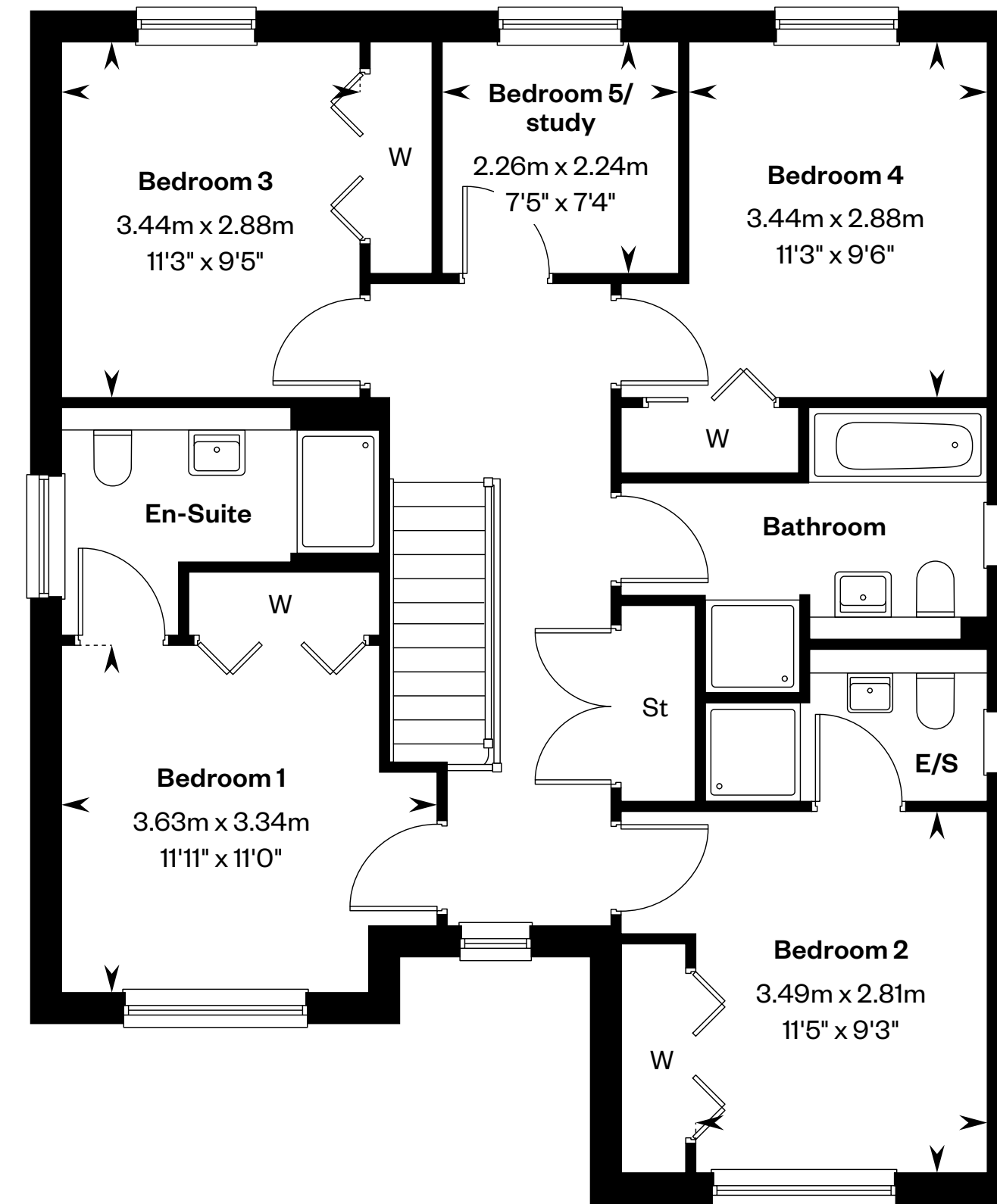
Plot 2 – handed



This is a Predicted Energy Assessment for properties that are incomplete. Once the property is completed, this rating will be updated and an official Energy Performance certificate will be created for the property.



Ground floor



First floor

Please ask your Sales Consultant for further details. E/S: En-Suite. St: Store cupboard. W: Wardrobe.

IMPORTANT NOTICE TO CUSTOMERS: The Consumer Protection from Unfair Trading Regulations 2008. Cala Homes (East) Limited operates a policy of continual product development and the specifications outlined in this brochure are indicative only. The computer generated images and photographs do not necessarily represent the actual finishings/elevation or treatments, landscaping, furnishings and fittings at this development. Information contained is accurate at date of publication on 02.12.24. See the main brochure for the full Consumer Protection statement.



The Crichton

5 bedroom detached home



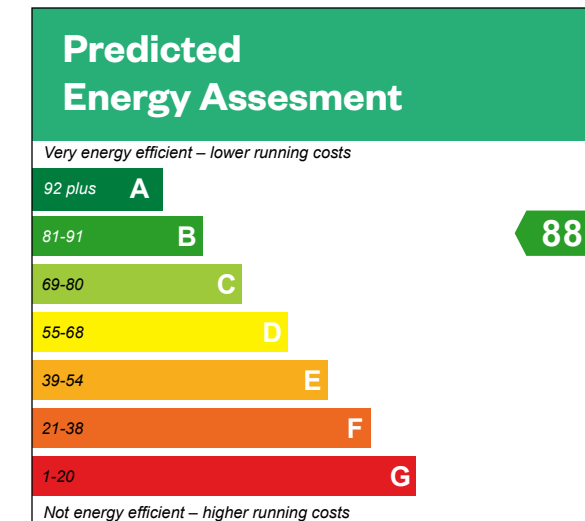
Computer generated image - The Crichton

The Crichton

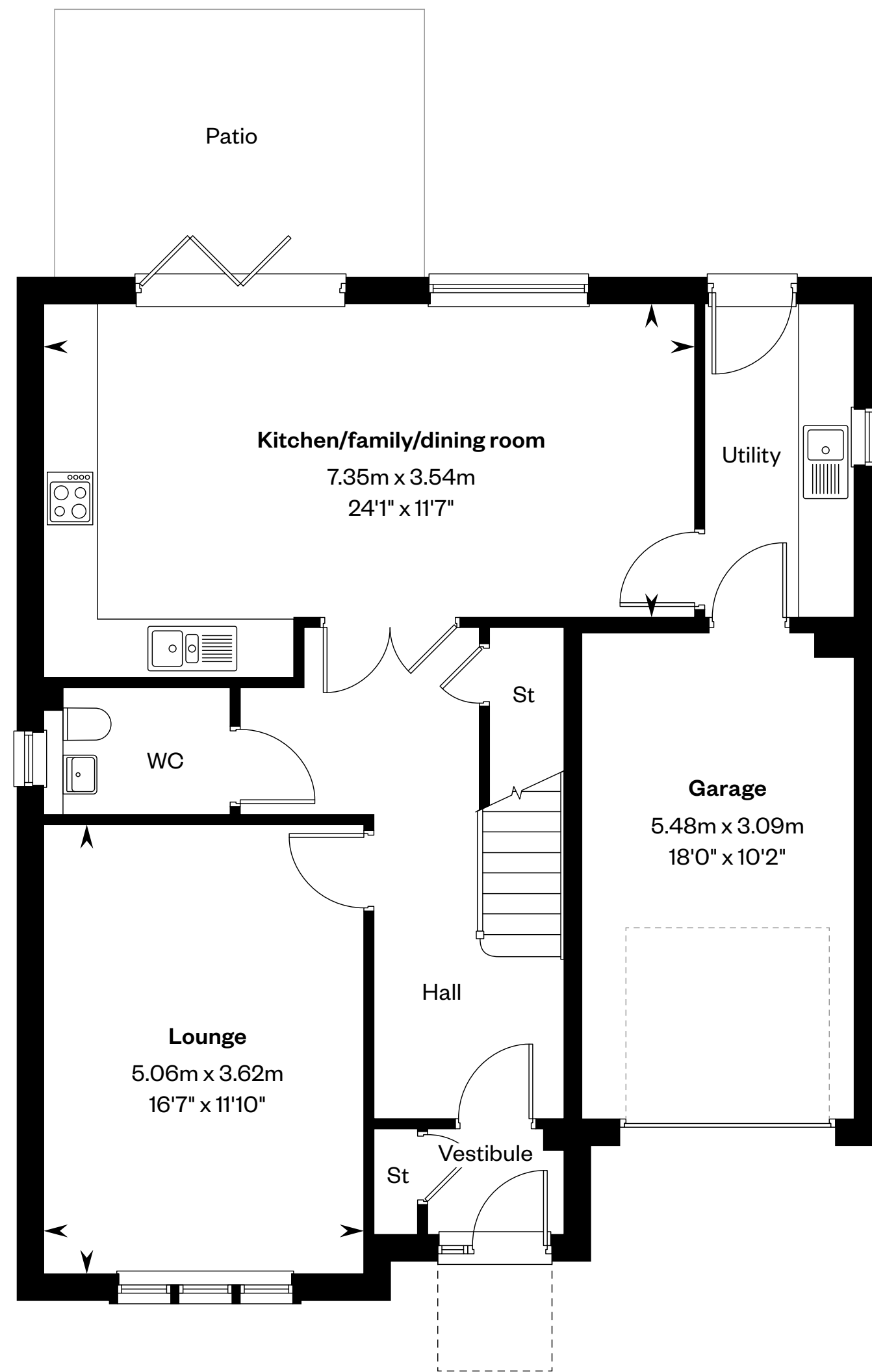
5 bedroom detached home

Plots 3, 19, 94, 107, 111 & 115 – as shown

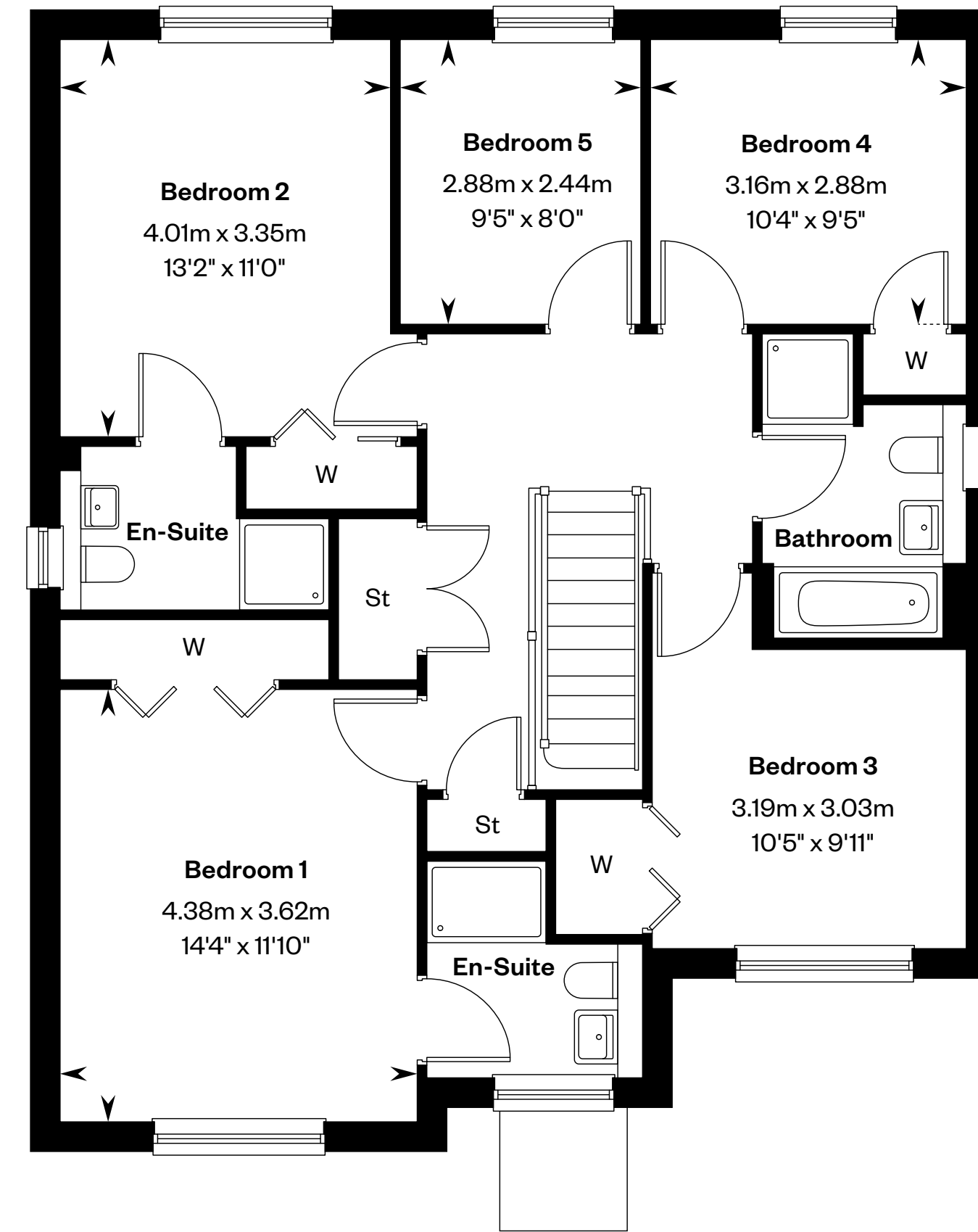
Plots 7, 9, 20, 92 & 104 – handed



This is a Predicted Energy Assessment for properties that are incomplete. Once the property is completed, this rating will be updated and an official Energy Performance certificate will be created for the property.



Ground floor



First floor

Please ask your Sales Consultant for further details. St: Store cupboard. W: Wardrobe.

IMPORTANT NOTICE TO CUSTOMERS: The Consumer Protection from Unfair Trading Regulations 2008. Cala Homes (East) Limited operates a policy of continual product development and the specifications outlined in this brochure are indicative only. The computer generated images and photographs do not necessarily represent the actual finishings/elevation or treatments, landscaping, furnishings and fittings at this development. Information contained is accurate at date of publication on 02.12.24. See the main brochure for the full Consumer Protection statement.



The Darroch

5 bedroom detached home



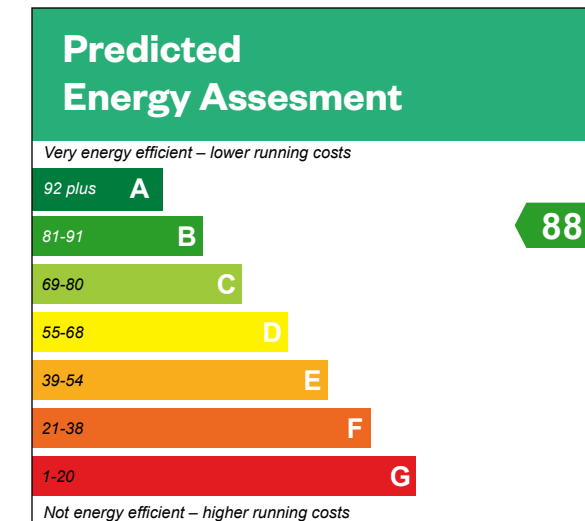
Computer generated image - The Darroch

The Darroch

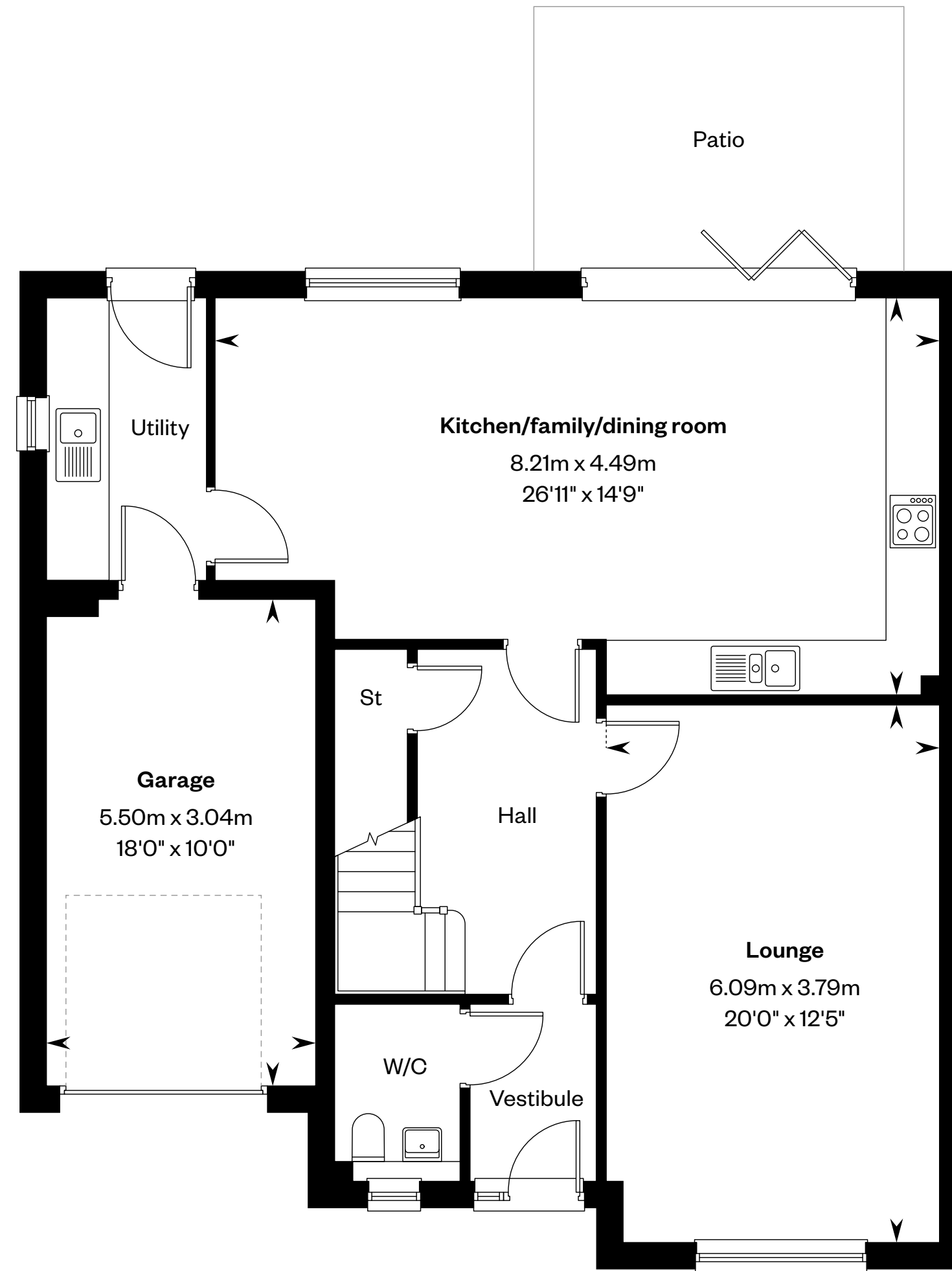
5 bedroom detached home

Plots 1, 4, 10, 18, 105 & 113 – as shown

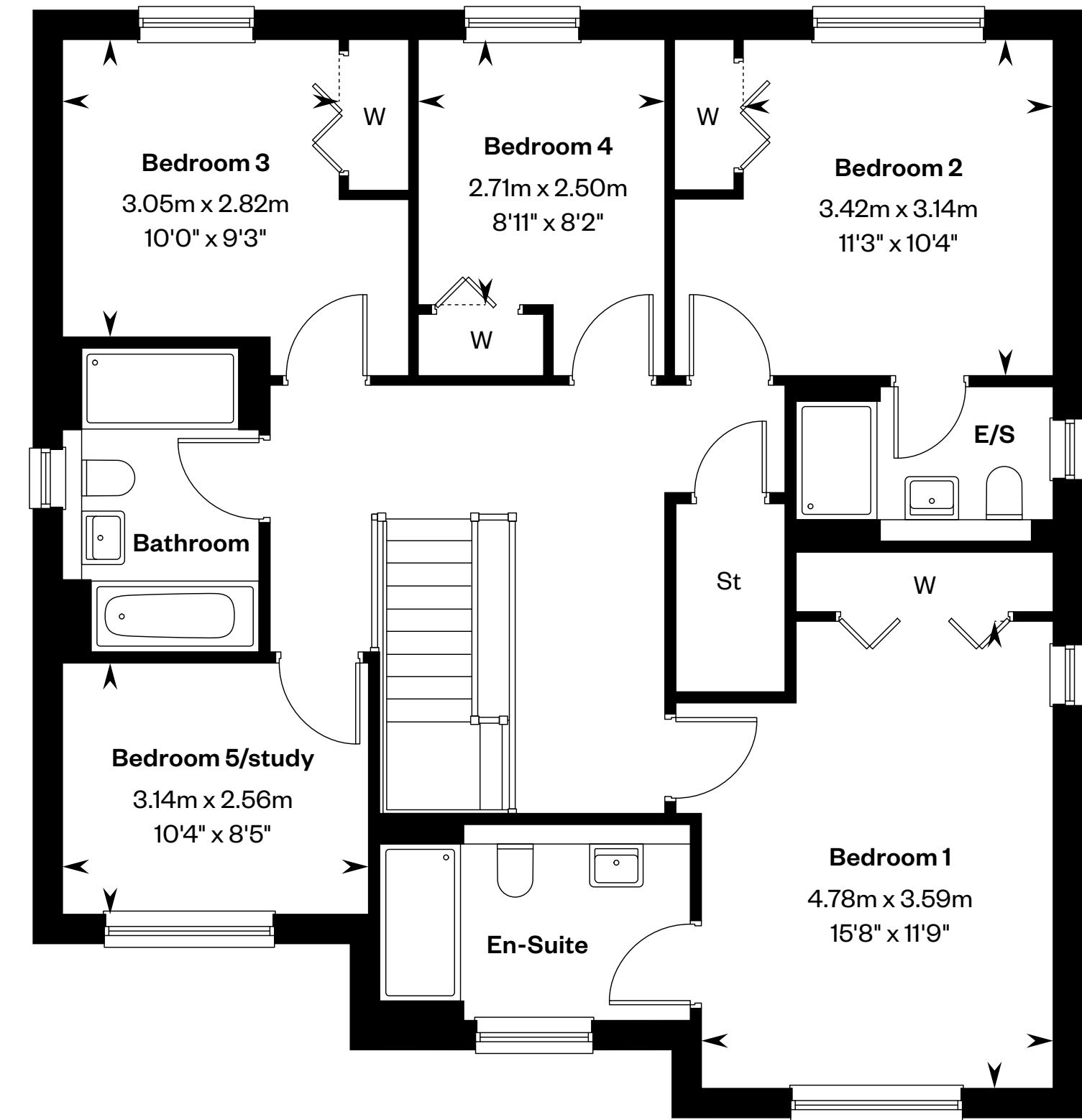
Plots 8, 13 & 14 – handed



This is a Predicted Energy Assessment for properties that are incomplete. Once the property is completed, this rating will be updated and an official Energy Performance certificate will be created for the property.



Ground floor



First floor

Please ask your Sales Consultant for further details. E/S: En-Suite. St: Store cupboard. W: Wardrobe.

IMPORTANT NOTICE TO CUSTOMERS: The Consumer Protection from Unfair Trading Regulations 2008. Cala Homes (East) Limited operates a policy of continual product development and the specifications outlined in this brochure are indicative only. The computer generated images and photographs do not necessarily represent the actual finishings/elevation or treatments, landscaping, furnishings and fittings at this development. Information contained is accurate at date of publication on 02.12.24. See the main brochure for the full Consumer Protection statement.



The Dewar

5 bedroom detached home



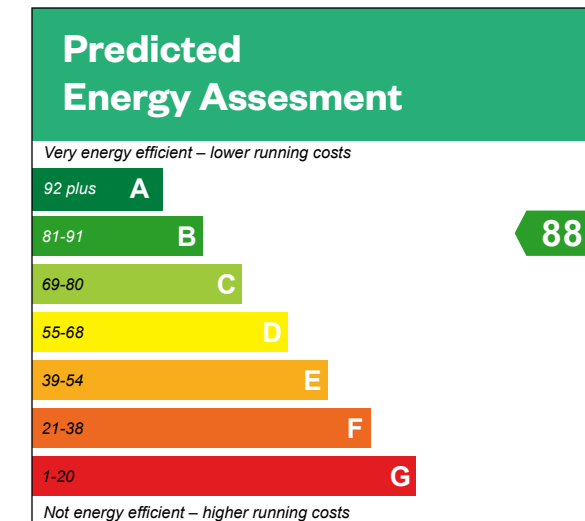
Computer generated image - The Dewar

The Dewar

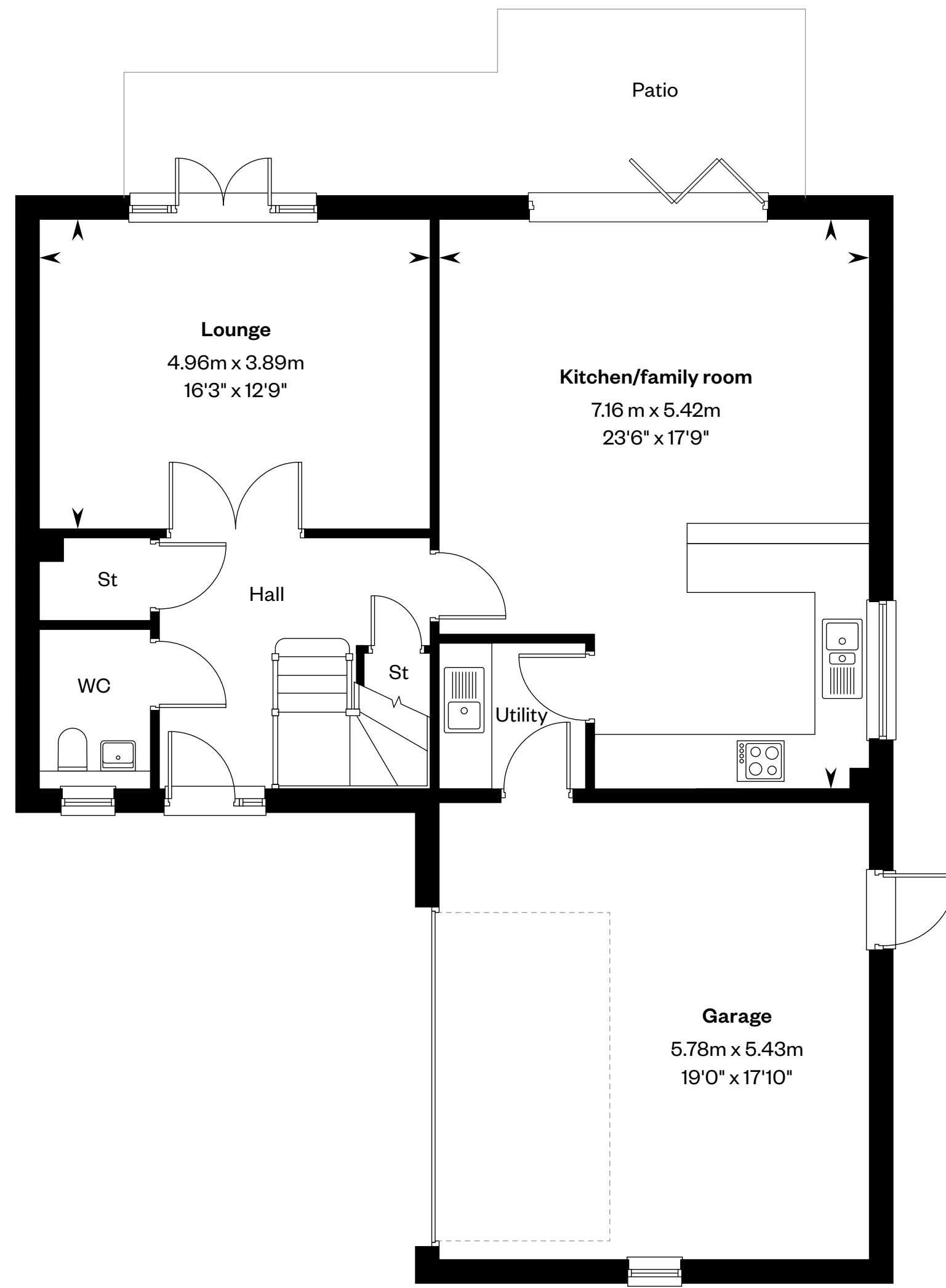
5 bedroom detached home

Plots 5 & 11 – as shown

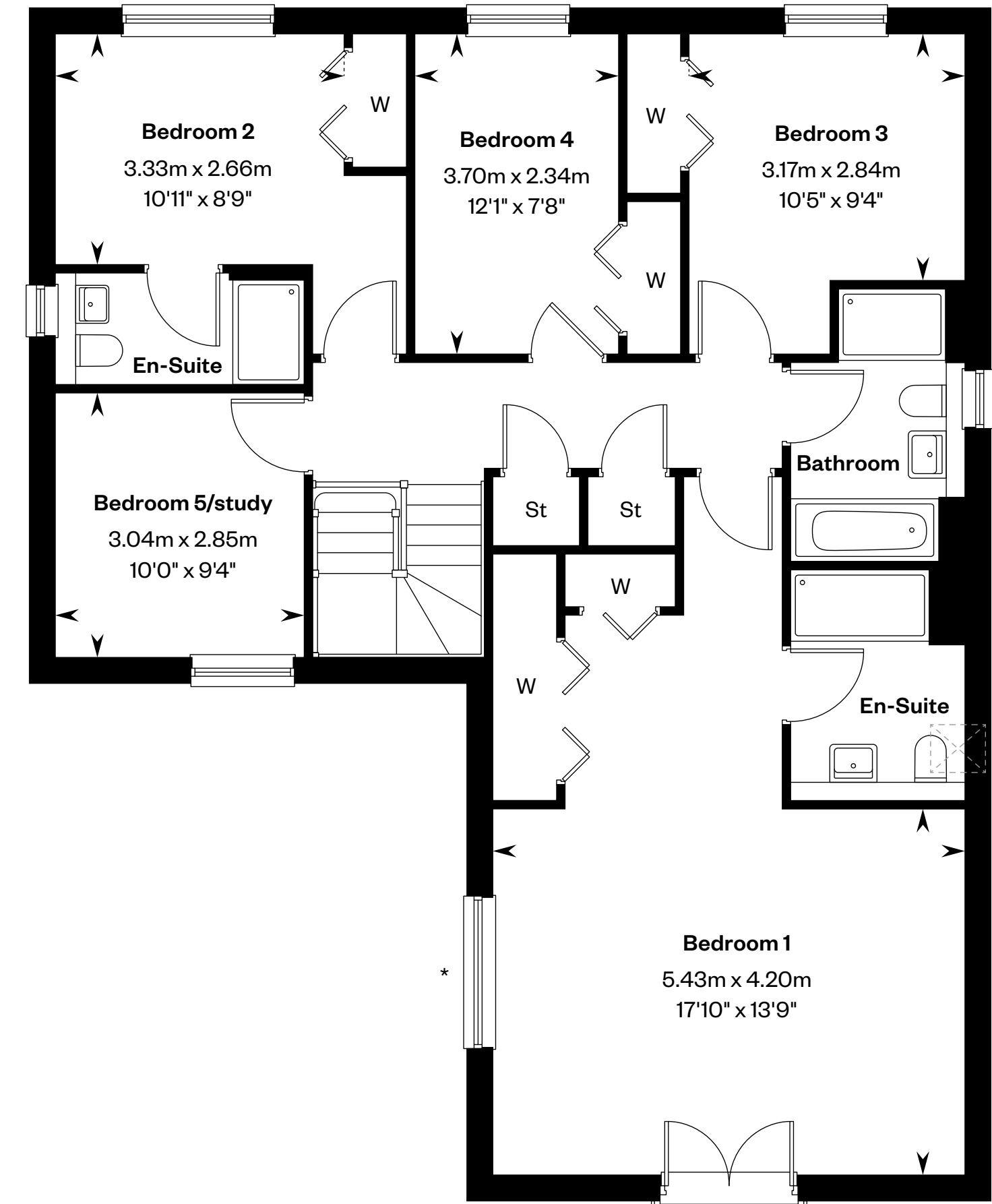
Plot 5 has a different garage and window configuration. Please speak to a sales advisor for details



This is a Predicted Energy Assessment for properties that are incomplete. Once the property is completed, this rating will be updated and an official Energy Performance certificate will be created for the property.



Ground floor



First floor

*Juliet balcony to plot 5 only. **Roof lights to plot 5 only. Please ask your Sales Consultant for further details. A/C: Airing cupboard. E/S: En-Suite. St: Store cupboard. W: Wardrobe. ☒: Roof light/velux window. - - - -: Dotted lines denote reduced head height.

IMPORTANT NOTICE TO CUSTOMERS: The Consumer Protection from Unfair Trading Regulations 2008. Cala Homes (East) Limited operates a policy of continual product development and the specifications outlined in this brochure are indicative only. The computer generated images and photographs do not necessarily represent the actual finishings/elevation or treatments, landscaping, furnishings and fittings at this development. Information contained is accurate at date of publication on 02.12.24. See the main brochure for the full Consumer Protection statement.



The Elliot

4 bedroom detached home with study



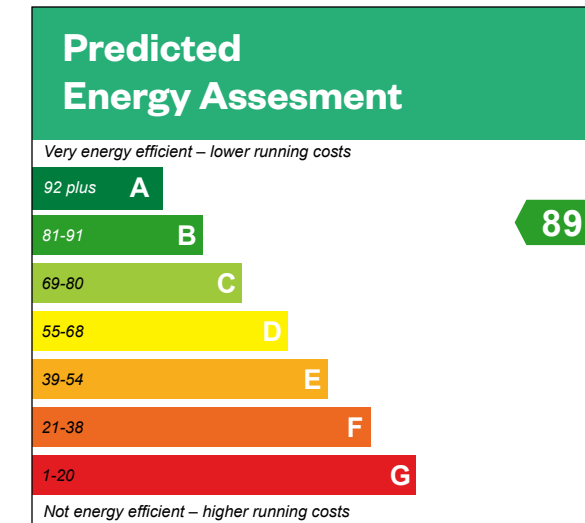
Computer generated image - The Elliot

The Elliot

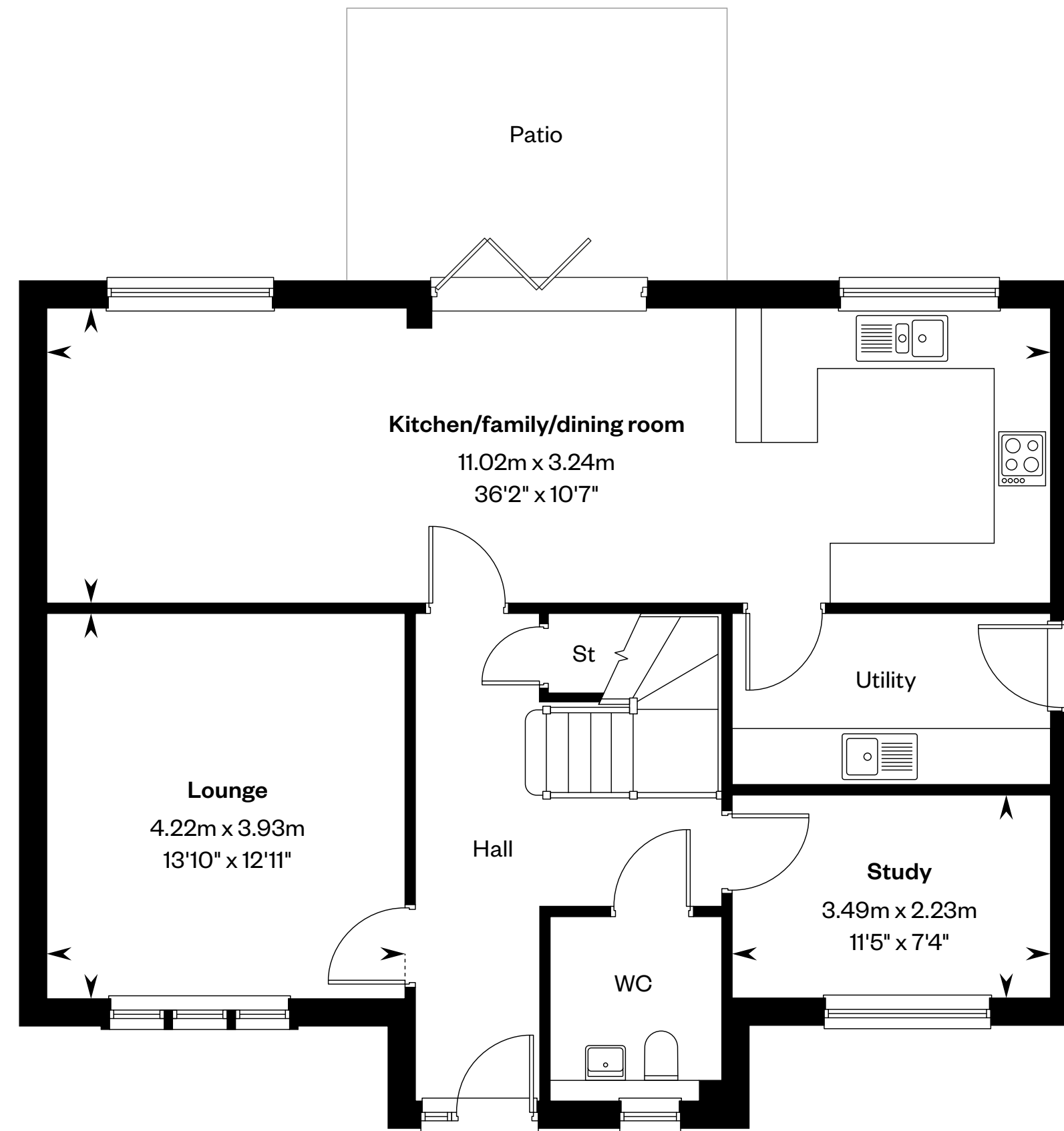
4 bedroom detached home with study

Plot 12 – as shown

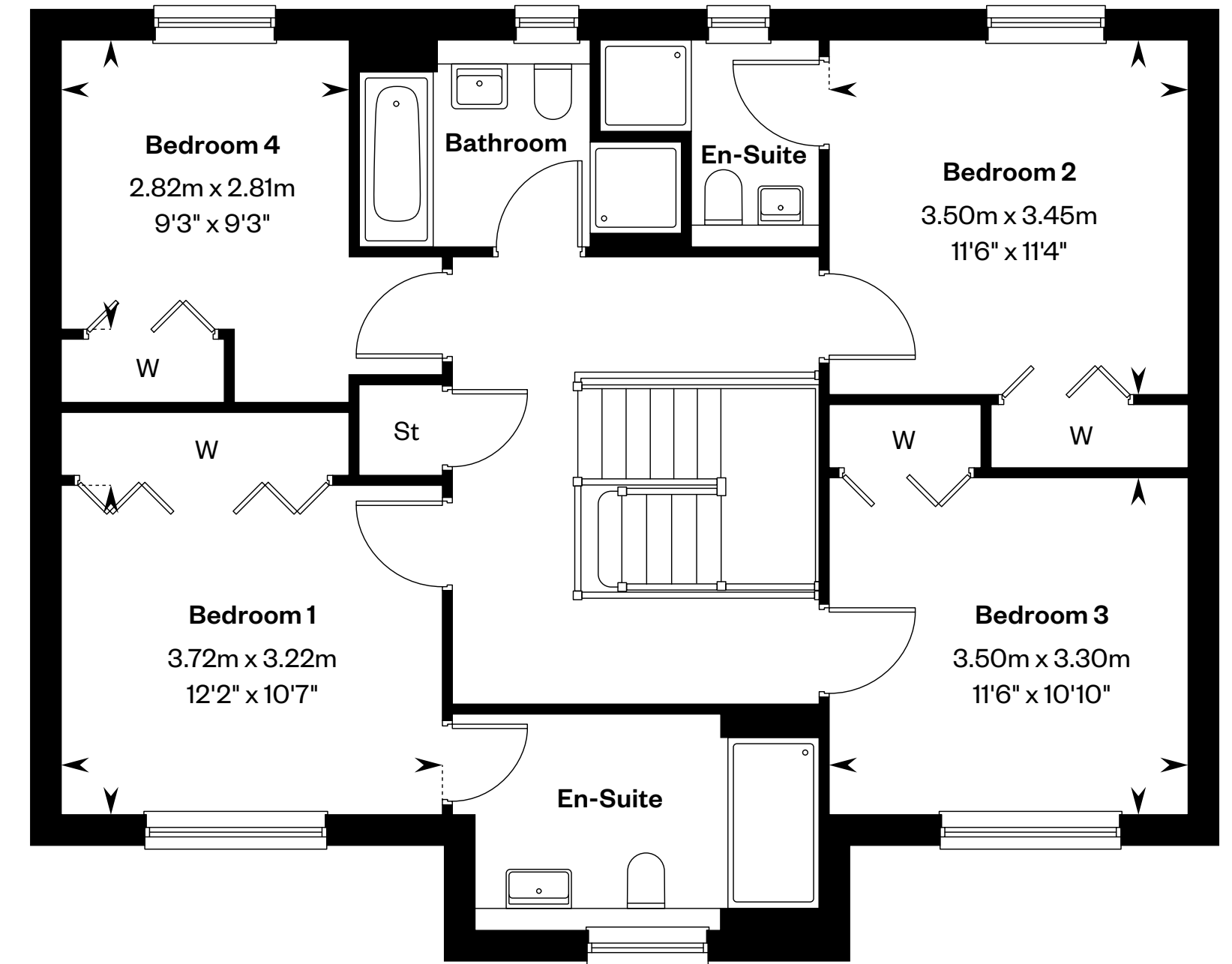
Plot 15 – handed



This is a Predicted Energy Assessment for properties that are incomplete. Once the property is completed, this rating will be updated and an official Energy Performance certificate will be created for the property.



Ground floor



First floor

Please ask your Sales Consultant for further details. St: Store cupboard. W: Wardrobe.

IMPORTANT NOTICE TO CUSTOMERS: The Consumer Protection from Unfair Trading Regulations 2008. Cala Homes (East) Limited operates a policy of continual product development and the specifications outlined in this brochure are indicative only. The computer generated images and photographs do not necessarily represent the actual finishings/elevation or treatments, landscaping, furnishings and fittings at this development. Information contained is accurate at date of publication on 02.12.24. See the main brochure for the full Consumer Protection statement.